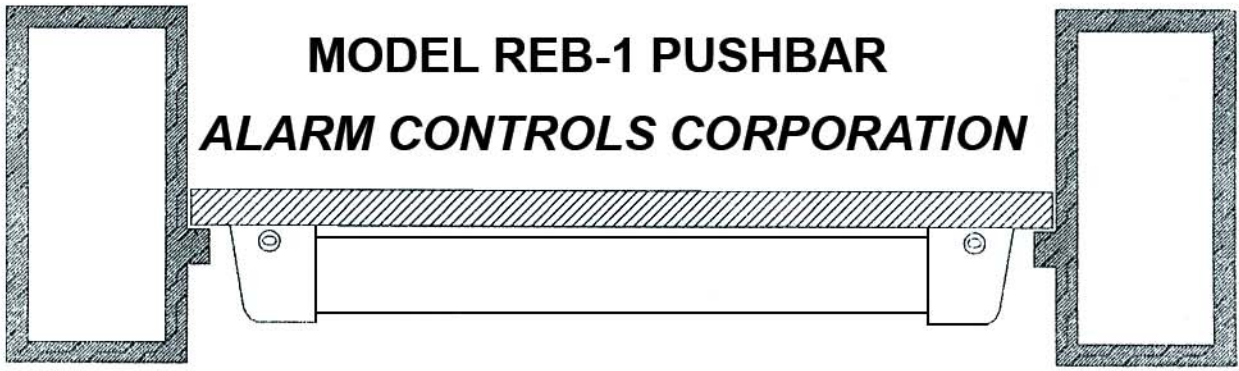
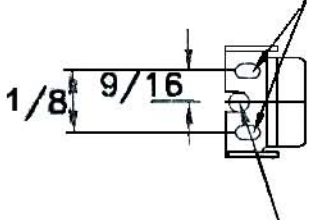


# MODEL REB-1 PUSHBAR

## ALARM CONTROLS CORPORATION

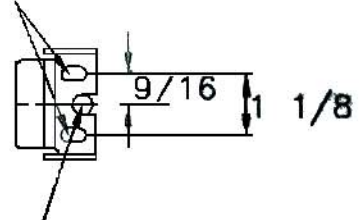


DRILL 3/8" MOUNTING HOLE



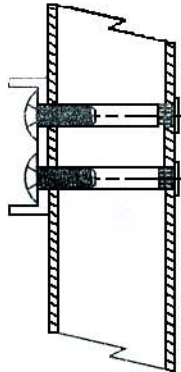
HORIZONTAL REFERENCE LINE  
40-42" FROM FINISHED FLOOR

DRILL 3/8" MOUNTING HOLE

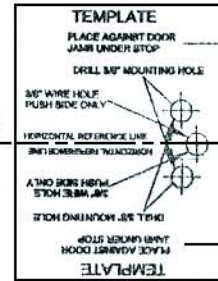


DRILL 3/8" WIRE HOLE PUSH SIDE ONLY

DRILL 3/8" WIRE HOLE PUSH SIDE ONLY



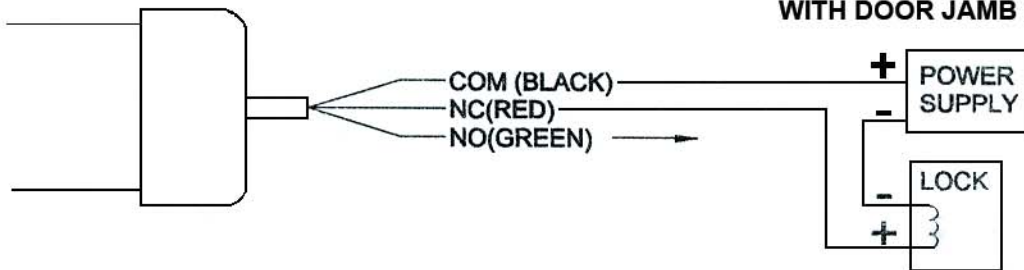
HORIZONTAL REFERENCE LINE



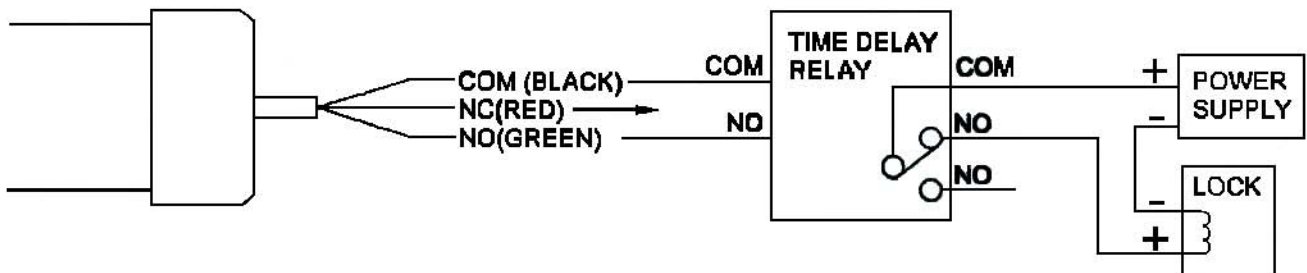
DOOR JAMB

PLACE TEMPLATE ON FACE OF DOOR AGAINST DOOR JAMB CENTERED WITH HORIZONTAL REFERENCE LINE.

NOTE: IF DOOR STOP IS IN THE WAY SLIDE TEMPLATE BETWEEN STOP AND DOOR FACE UNTIL CONTACT WITH DOOR JAMB IS MADE.



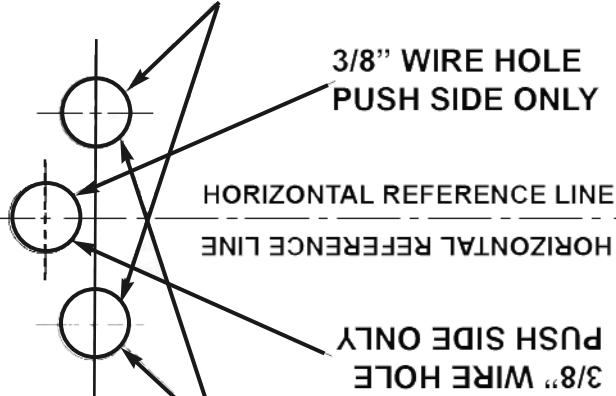
5 AMP 125/250 VAC



# TEMPLATE

PLACE AGAINST DOOR  
JAMB UNDER STOP

DRILL 3/8" MOUNTING HOLE



3/8" WIRE HOLE  
PUSH SIDE ONLY

HORIZONTAL REFERENCE LINE

HORIZONTAL REFERENCE LINE

3/8" WIRE HOLE  
PUSH SIDE ONLY

DRILL 3/8" MOUNTING HOLE

PLACE AGAINST DOOR  
JAMB UNDER STOP

# TEMPLATE