



Installation & Service Tools

Sturdy Strike Marker



The **Sturdy Strike Marker** easily marks the strike location on wood and steel jambs. It features durable solid steel construction with replaceable hardened steel tips. Wooden strike locators do not last. This tool makes it easy to accurately mark the strike location on a door jamb and will not split or crack when needed most.

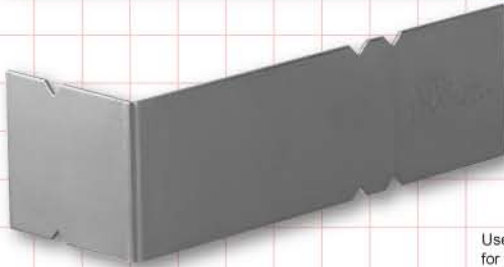
No. SSM-36T

Package of (3) Steel Tips



Sturdy Strike Marker
No. SSM-36

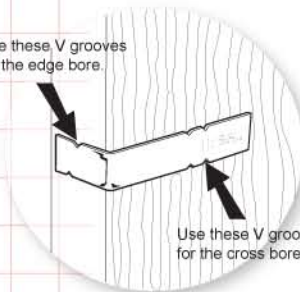
Easy Backset Marker



The **Easy Backset Marker** marks the backset location for 2-3/4" and 2-3/8" backset, and bolt location for 1-3/4" thick doors. It includes edge boremarks and is quick and easy to use! Installing locksets and deadbolts is an everyday occurrence. This tool makes it easy to accurately mark the backset on the door when a jig is not available.

Easy Backset Marker
No. EBM-234

Use these V grooves for the edge bore.



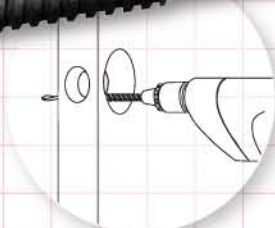
Use these V grooves for the cross bore.

Router Drill



The **Router Drill** saws, drills, routs and files. It fits any electric drill or drill press. **It cuts its own starting hole in any shape or direction that the tool is moved.** It has sharp milled flutes for fast cutting action that will not clog. Ideal for enlarging holes and making scrolls. It cuts wood, plastics and nonferrous metals and is made of hardened steel for a long life.

Router Drill
No. RD-1



Cylinder Shims



If you need to re-pin a cylinder and you do not have the key, **shimming it open is an easy, effective solution.** HPC's stainless steel **Cylinder Shims** are strong and firm. They are packed 25 pieces per bag.

Cylinder Shims
No. SCS-25