

Accessories



F-4023 Shown

Removable mullion

- Removable mullions are easily removed and reinstalled for full width access
- Increased security and tighter closure
- Minimizes door warp age and sag
- Regulates the traffic flow in-and-out
- Rim devices are used on both leaves, attaining a perfect symmetrical opening
- Mullion assembly consists of a mullion, top and bottom fittings and mounting package
- Mullion can be cut on the job for doors under stock lengths

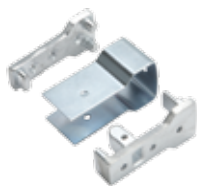
2923, (F)4023, (F)KR4023 Mullion

These steel mullions can be used with the 19-R and F-19-R devices. Soffit adapters are available for the 2923 and 4023 mullions. The F4023 and F-KR4023 fire-rated mullions also include four stabilizer blocks as required for labeled installations. Strikes are not included with mullion and should be specified with the 19-R or F-19-R device, see page 11 for strike information. KR mullions require 1 1/8" mortise cylinder with standard "A" cam. The mullion fittings are made from ductile iron. The (F)4023 and (F)KR4023 are 2" wide and 3" deep. The 2923 is 1 1/2" wide and 2 1/2" deep. Furnished in prime coat.

Mullions



RM 170



Mullion brackets



525 Mullion stabilizer for RM170

RM 170 Removable mullion

RM 170 for use with 1790 series. Comes complete with adjustable mortised strikes and security clips. Compatible with doors 7' to 10' and for use with stiles as narrow as 1 3/4". Made of aluminum, available in anodized aluminum or bronze finishes. Mullion is 3 1/2" deep, 1" wide on door side, and 1 5/8" at the widest point.

Mullion strikes



STK170

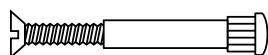
Adjustable mortise strikes (pair).

- 2 7/8" tall
- 1 3/4" wide
- 1" thick

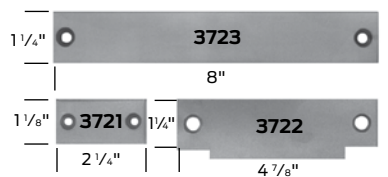
Sex bolts

Sex bolts are available for 1 3/4" door thickness. Screws to fit are available in 3/4" and 2" lengths to cover a wide range of door thicknesses.

- 2729 (#10-24 thread)
- 4122 (1/4"-20 thread)



Filler plates



3721/3722/3723

Steel filler plates

- 3721 Cylindrical lock frontfiller
- 3722 ASA strike filler - set no. SC for 161 cutout
- 3723 Mortise lock front filler
- 3722 ASA strike filler - set no. SM for 86 cutout