

FEATURES	ELECTROHYDRAULIC		ELECTROMECHANICAL		
	6000	5700	6300	5800	5600
Non-Handed	Yes	Yes	Yes	Yes	Yes
Push or Pull Side Mounting	Yes	Yes	Yes	Yes	Yes
Push and Go	Yes	No	Yes	Yes~	Yes
Obstruction Detection	Open/Close	Open	Open/Close	Open	Open/Close
Back Check Standard	Yes	Yes	Yes	Yes	Yes
Power Close	No	No	Yes	Yes~	No
Latch Retraction	Yes	Yes	Yes	Yes	No
Infinite Hold Open	Yes	No	Yes	Yes#	No
Door Traffic (Heavy, Moderate, or Light traffic)	H	M	M-H	M-H	L
Use on Exterior Doors	Yes	Yes	Yes	Yes	No
Use on Fire Rated Doors	Yes	Yes	Yes	Yes (90 min)	No
Use with Actuation Devices: Push Buttons, RF and Hands Free	Yes	Yes	Yes	Yes	Yes
Integration with Access Control Systems	Yes	Yes	Yes	Yes	Yes
Blow Open Function for Smoke Ventilation	Yes	No	Yes	No	No
Warranty	2 yrs	2 yrs	2 yrs	2 yrs	1 yr

SPECIFICATIONS

Maximum Door Weight [^]	250 lbs	250 lbs	200 lbs	250 lbs	150 lbs
Current Draw	.9A	.6A	1.5A	.4A	.6A
Onboard Power Supply for Accessories	24VDC @ 1.3 A	24VDC @ 1.1 A	24VDC @ 1.3 A	N/A	24VDC @ 1.1 A

REGULATORY

ADA	Yes	Yes	Yes	Yes	Yes
BHMA Certified to A156.19	Yes	Yes	Yes	Yes	No
Meets UBC 7.2 (1997) and UL10C Positive Pressure Requirements	Yes	Yes	Yes	Yes	No
Conforms to ANSI/UL 325	Yes (ETL)	Yes (UL)	Yes (ETL)	Yes (ETL)	Yes (ETL)

~ PRO Plus only, # Auxiliary switch required

General door usage guidelines for more common applications:

Potential Applications

Potential Applications	Usage	Norton Operators best suited for these usage rates
Large department store entrance	Heavy	6000
Large office building entrance		
Theatre entrance		
School entrance		
School restroom entrance		
Store or bank entrance		
Office building restroom entrance	Moderate	5700
School corridor door		
Office building corridor door		
Store restroom entrance		
Building entrance door	Light	5600
Non-Fire Rated building restroom door		
Non-Fire Rated building hallway door		
Non-Fire Rated building supply closet door		

Note: In addition to automatic cycles, certain factors must be taken into consideration, such as door weight and location, code requirements, and other aspects related to the specific application. Consult local authority having jurisdiction.



Norton
ASSA ABLOY

ASSA ABLOY is the global leader in door opening solutions, dedicated to satisfying end-user needs for security, safety and convenience

Since 1880, Norton door controls have been an integral part of schools, hospitals and businesses around the globe. When you need products and people that perform at the highest level, rely on Norton – From Open to Close.

Norton Door Controls | www.nortondoortcontrols.com
3000 Highway 74 East | Monroe, NC 28112 | Tel: 1-877-974-2255 | Fax: 1-800-338-0965

ASSA ABLOY Door Security Solutions Canada | www.assaabloy.ca
160 Four Valley Drive | Vaughan, Ontario, L4K 4T9 Canada | Tel: 800-461-3007 | Fax: 1-905-738-2478

Norton is a brand associated with Yale Security Inc., an ASSA ABLOY Group company. Copyright © 2012-2017, Yale Security Inc. All rights reserved. Reproduction in whole or in part without the express written permission of Yale Security Inc. is prohibited.

Norton
ASSA ABLOY

ASSA ABLOY, the global leader in door opening solutions

LOW ENERGY OPERATORS

BROCHURE

43238 - 8/17R

ELECTROHYDRAULIC

- » Electrohydraulic low energy operators incorporate a door closer for smooth reliable door control
- » These units are used in applications where doors are typically operated manually, but can also be activated via wall switches, motion sensors, etc., for automatic operation

6000 SERIES

The 6000 Series low energy operator is a heavy-duty unit designed for rigorous, high-use applications. Built-in intelligence enables the operator to safeguard users while providing better door control. Simple installation and adjustment features combined with the unit's high level of versatility allows for seamless integration with a multitude of facilities and systems.



5700 SERIES

The 5700 Series Low Energy Operator comprises three components, making it an easy solution for medium traffic doors that need basic operator functionality. While simple to install and use, this operator consists of a 1600 series door closer with a proven history of dependability.



Simple to Install & Maintain

- » LCD screen and joystick controller simplifies setup
- » Wiring harness positioned for easy access with screwdriver

Versatile Configuration & Integration

- » Large onboard power supply for multiple system peripherals
- » Configurable to meet virtually any site, activation or system integration requirements
- » Interfaces with electric hardware and integrates with access control

Robust Design Delivers Reliability

- » Uses 7500 Series heavy duty, Grade 1 door closer
- » Heavy duty chain and aluminum backplate withstand rigorous applications
- » Heavy duty arms available for deep reveal application

Dependable

- » Uses Series closer for reliable door control

Flexible

- » Non-handed
- » Push or pull side mounting

Versatile

- » Coordinates and powers electric strike
- » Optional power cord eases installation on existing openings

ELECTROMECHANICAL

- » Electromechanical low energy operators feature a motor and gearbox for consistent automatic operation
- » These units are used in applications where automatic mode (activated by wall switches, motion sensors, etc.) is the primary function

5600 SERIES

The 5600 Series Low Energy Operator provides a straightforward solution for interior, non-fire rated doors that need to be automated to offer ADA-compliant accessibility.



Consistent and Dependable

- » Quiet electromechanical operation meets ADA requirements and provides easy access

Hands-free Operation

- » Ideal for public restrooms or upgrading openings for ADA compliance when used with touchless wall switches

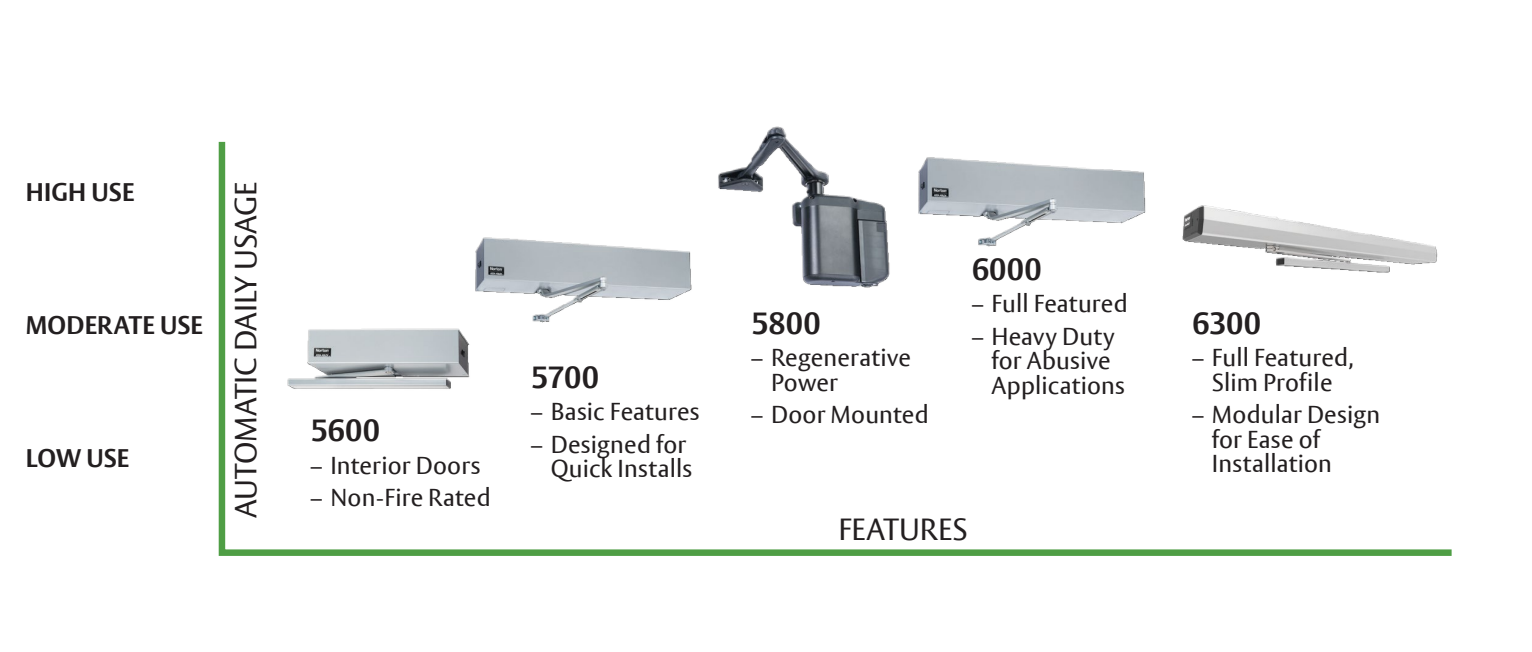
Affordable Functionality

- » Simply opens and closes the door to automate interior, non-fire rated doors

Ideal for Retrofit Applications

- » Easy installation and optional AC power cord effortlessly converts openings for barrier-free accessibility

OPERATOR SELECTION GUIDE



5800 SERIES

As one of the world's only regenerative power door operators, Norton's 5800 Series ADAEZ® is certified by GreenCircle to reduce energy consumption by as much as 100 percent versus other comparable operators. Available in wireless and plug-in versions and able to fit in the tightest of spaces, the 5800 is simple to install and use.



Simple Installation

- » Mounts on door
- » No voltage / low voltage power to opening
- » Includes stainless steel, weatherized RF push buttons

Flexible

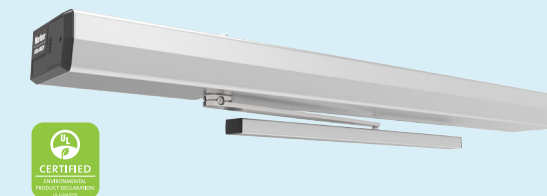
- » Push and pull side mounting
- » Adjustable open/closing force
- » Functions like ordinary door closer when used manually

Dependable

- » Protection from high-wind & abusive environments
- » Built-in battery backup allows use during power failure
- » Brushless DC motor/gearbox tested 10+ million cycles

6300 SERIES

The new Norton 6300 Series Low Energy Operator offers a broad set of intelligent functions, such as latch boost, latch retraction and obstruction detection to safely secure a variety of moderate to high traffic openings. A unique design with one of the slimmest profiles available allows the 6300 to blend more seamlessly with the frame while fitting challenging applications with minimal header space. A modular design and simple controls also make for easy installation and setup.



Smart

- » Latch boost ensures door closes to secure facility
- » Occupant safety enhanced by obstruction detection, power assist, and push and go functions
- » Inputs available for security override and fire safety

Simple

- » Modular, four-piece design allows for one-person installation
- » Heavy-duty back plate serves as template simplifying and speeding installation
- » Unit learns door properties (approximate weight) during installation for easy programming and set-up

Good Looking

- » Unique design with slim profile blends seamlessly with frame
- » Cover spans full frame for 36" doors; accommodates doors up to 48"
- » Low profile easily fits applications with minimal header space

