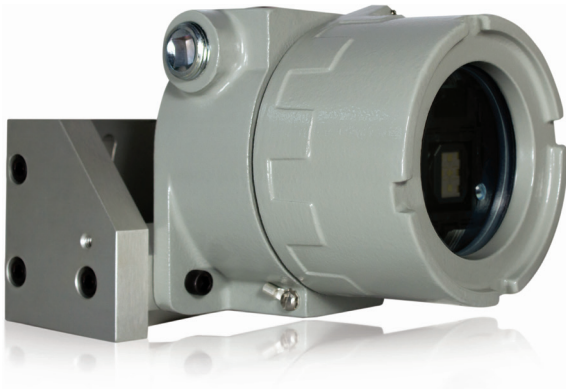
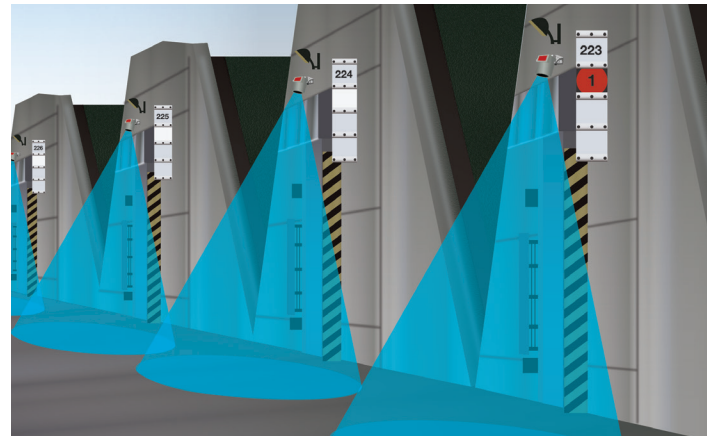


PHOENIX EX™

MOTION SENSOR WITH EXPLOSION-PROOF/FLAME-PROOF HOUSING



PRIMARY APPLICATIONS



DESCRIPTION

BEA's Phoenix EX™ combines a microwave activation sensor in an explosion-proof / flame-proof housing, which is ideal for use in unique environments such as chemical manufacturing, petroleum refining and military facilities.

The Phoenix EX™ is designed to detect within a desired area for security, warning indication and automation. When tied into a security system, the Phoenix EX™ offers a monitoring feature via the end-of-line resistors. These resistors provide unique output states, which allow differentiation between an activation signal and an interruption in functionality due to tampering of the device.

The explosion-proof / flame-proof housing is a NEMA 4X, 7, 9 water-proof rated enclosure designed as an IP66 housing. This housing achieves UL Class I / Division I, Groups B, C, D; UL Class II, Groups E, F, G and UL Class III****.

****Adalet / Scott Fetzer Co., UL Listing #E81696

FEATURES & BENEFITS

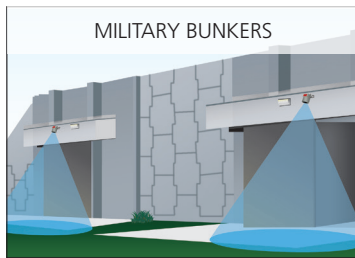
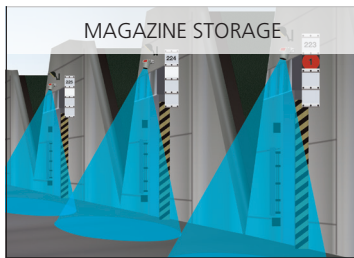
- Bidirectional, unidirectional approach and unidirectional depart microwave detection options
- Integrated tamper alert switch and end-of-line resistors
- Optional remote control programming for ease of installation
- Explosion-proof / flame-proof housing
- 13-pound housing
- Tilt adjustment angle: -90° to +30° in elevation
- FM: Approved instrument housing



BEA, Inc.
RIDC Park West
100 Enterprise Drive
Pittsburgh, PA 15275-1213

Customer Service: 800.523.2462
Technical Support: 800.407.4545
www.BEAinc.com

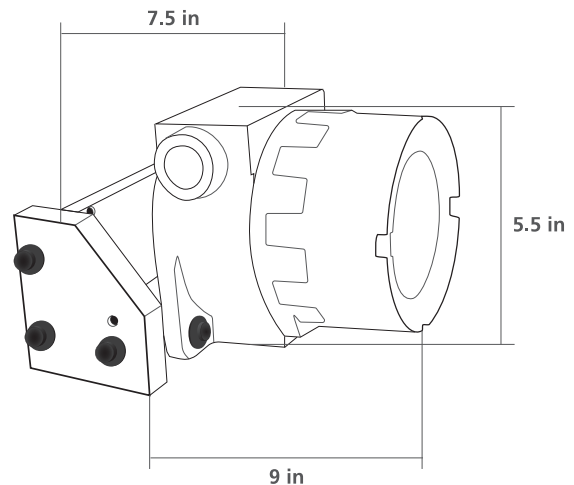
APPLICATIONS



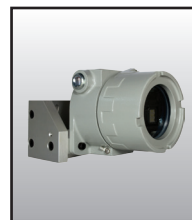
TECHNICAL SPECIFICATIONS

Technology	Microwave Doppler Radar
Transmitter Frequency	24.150 GHz
Transmitter Radiated Power	< 20 dBm EIRP
Transmitter Power Density	< 5 mW/cm ²
Detection Mode	Motion
Anti-tamper Feature	Tamper alert via output
Detection Zone (W x D)	
Phoenix EX™	156 in x 192 in @ 192 in (13 ft x 16 ft @ 16 ft)
Phoenix EX XL™	156 in x 78 in @ 98 in (13 ft x 6.5 ft @ 8.2 ft)
Phoenix EX Wide™	360 in x 132 in @ 252 in (30 ft x 11 ft @ 21 ft)
Output*	Relay (free of potential change-over contact)
Maximum Contact Voltage	42 V AC/DC
Maximum Contact Current	1 A (resistive)
Maximum Switching Power	30 W (DC); 60 VA (AC)
End-of-Line Resistors**	Default
Resistor 1	No Value
Resistor 2	No Value
Minimum Detection Speed	2.2 in/s
LED Signals	Green: Value indication upon query Red: Detection state & parameter indication
Supply Voltage	12 to 24 VAC; +/-10% (50 to 60 Hz) 12 to 24 VDC; +30% / -10%
Maximum Power Consumption	< 2 W
Electrical Access	¾ in NPT pipe thread
Cable Length	30 ft or 100 ft (default)
Mounting Height	
Phoenix EX™	138 in to 276 in (11.5 ft to 23 ft)
Phoenix EX XL™	84 in to 138 in (6.5 ft to 11.5 ft)
Phoenix EX Wide™	138 in to 252 in (11.5 ft to 21 ft)
Dimensions (Housing & Bracket)	9 in (L) x 7.5 in (W) x 5.5 in (H)
Weight	13 lbs
Housing / Bracket Material	Copper-free Aluminum / Aluminum
Temperature Range	-22° F to +140° F
Degree of Protection (Housing)***	Class I, Group B, C, D; Class II, Group E, F, G; Class III; Class I, Zone 1 AEx d IIC; Ex d IIC; NEMA Type 4X, 7, 9; IP66; UL 1203; FM 3615 CAS C22.2 No. 30; UL 60079-0/UL 60079-1; CAS 60079-0/CSA 60079-1; ATEX Directive 94/9/EC; UL 50; IEC 60529
Norm Conformance	EMC: 2004 / 108 / EC R&TTE: 1999 / 5 / EC

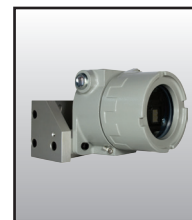
DIMENSIONAL DRAWINGS



RELATED PRODUCTS



10PHOENIXEX
STANDARD
MOUNTING HEIGHTS



10PHOENIXEXXL
LOW MOUNTING
HEIGHTS



10PHOENIXEXW
WIDE
PATTERN



10REMOTE
BEA UNIVERSAL
REMOTE CONTROL

*Output ratings may vary depending on optional end-of-line resistor values

**End-of-line resistor values can be ordered to custom specifications to meet application requirements

***Measured in optimal conditions

****Adalet / Scott Fetzer Co., UL Listing #E81696

www.BEAinc.com

© 2016 BEA, Inc. All rights reserved.

PHOENIX EX™ MOTION SENSOR WITH EXPLOSION-PROOF/FLAME-PROOF HOUSING

BEA, Inc.
RIDC Park West
100 Enterprise Drive
Pittsburgh, PA 15275-1213

Customer Service: 800.523.2462
Technical Support: 800.407.4545



BEA
A HALMA COMPANY