



Access. Value. Today.



ASSA ABLOY

Experience a safer
 and more open world

About Alarm Controls

Headquartered in Phoenix, Arizona, Alarm Controls continues our commitment to supplying quality security equipment since we were founded in 1971.

For over 40 years, we have excelled at meeting our customer's requirements with a broad line of standard products at an exception value.

Today, backed by the strength of ASSA ABLOY, the global leader in door opening solutions, Alarm Controls continues to grow while maintaining the high level of customer service, quality and short lead times which our customers have grown accustomed to over the years.

We also remain committed to custom solutions. As always,

"IF YOU NEED IT, WE WILL MAKE IT"



ASSA ABLOY

Experience a safer and more open world

Magnetic Locks & Accessories

| | |
|--------------------------------|-------|
| 320S | 3 |
| 600 Series | 4-6 |
| 1200 Series | 7-9 |
| Lock N' A Box | 10 |
| Magnetic Lock Comparison Chart | 11-12 |

Magnetic Lock Accessories

| | |
|--|-------|
| Drop Plates, Dress Covers | 14 |
| GDH Glass Door Holder, Filler Plates, Installation Tools | 15 |
| L Brackets, Z Brackets | 16-17 |
| Armature & Mounting Plates | 17 |
| Cross Reference Guide | 18-19 |

Request to Exit Stations & Egress Devices

| | |
|--|-------|
| KR Series - Latching | 21 |
| TS-32 - Latching | 22 |
| PBL Series - Latching | 23 |
| PBM Series - Momentary | 24 |
| EB Series - Request to Exit Egress Stations | 25 |
| Request to Exit Stations | 26-41 |
| Request to Exit Stations with Pneumatic Push Button Timers | 42-45 |
| Vandal Resistant Push Buttons | 46-48 |
| Under Desk Door Release | 49-50 |
| Emergency Door Releases | 51-53 |
| No Touch Sensors | 54 |
| Hazardous Environment Push Buttons | 55 |
| Push Plates | 56-57 |
| Motion Sensor | 58 |
| Egress Devices - Push Bars | 59 |
| Switch Information Guide | 60 |

Remote Plates

| | |
|--------------------------------|-------|
| Remote Plates - Mini | 62-63 |
| Remote Plates - Narrow, Single | 64-78 |

Key Switches

| | |
|------------------------------|----|
| KA Series - Ace Terminal | 80 |
| KA Series - Flat Key | 81 |
| Mortise Cylinder Stations | 82 |
| Mortise Cylinder Accessories | 83 |
| Mounting Plates | 84 |

Digital Keypads

| | |
|---------|----|
| KP-100A | 86 |
| KP-200 | 87 |
| KP-300 | 88 |
| KP-400 | 89 |

Electric Strikes

| | |
|-----------------------------|----|
| AES-100 | 91 |
| AES-200 | 92 |
| AES-300 | 93 |
| AES Series Comparison Chart | 94 |

Monitoring & Control Stations

| | |
|--|-------|
| Monitoring & Control Stations - Momentary & Latching | 96-99 |
| Desktop Consoles | 100 |
| Control Panels | 101 |

Power

| | |
|---------------------|---------|
| Power Supplies | 103 |
| Distribution Boards | 104-105 |
| Door Loops | 106 |

Power Accessories

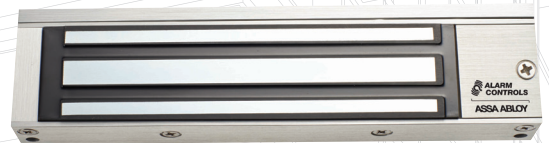
| | |
|----------------|-----|
| Accessories | 108 |
| Armored Cables | 108 |

System Accessories

| | |
|-----------------------|---------|
| Wireless Transmitters | 110 |
| Mounted Buzzers | 111-112 |
| Buzzers | 112-115 |
| Timers | 115-116 |
| Switches | 116-118 |
| LEDs | 118 |

| | |
|----------|-----|
| Warranty | 119 |
|----------|-----|

MagneticLocks



320S

Magnetic Cabinet Lock



Bracket mounted, single magnetic lock with 300 lbs holding force. This versatile maglock is easy to install, operates at 12 or 24 VDC and is ideal for cabinets and showcases.

Features

Standard Features

- Built-in arc suppression
- Instant release, no hysteresis
- Self-drilling TEC screws
- Non-aluminum parts are plated to resist corrosion
- E-Z mount header bracket and template provided for easy installation, no special tools required
- Can be used with any access control system
- Ideal for cabinets and showcases
- Clear anodized, (US28) finish standard
- Limited lifetime warranty

Options

- **DURO** Duranodic finish (US 40) available, specify when ordering.

Specifications

Holding Force

- 300 lbs

Dimensions

- Magnet size: 6-11/16" L x 1-1/2" H x 1-3/16" W
- Armature size: 5-1/2" L x 1-1/4" H x 7/16" W

Electrical

- Operates on 12 or 24 VDC, field selectable
- Low current draw: 250 mA at 12 VDC, 130 mA at 24 VDC

Operating Temperature

- +14 to +131F [-10 to +55C]

600S, 600L, 600LB

Single Magnetic Lock



Bracket mounted, single magnetic lock with 600 lbs holding force, that can be easily installed without special tools and used with any access control system. Ideal for high-use areas for traffic control in interior applications. Available with LED, bond sensor and door status signalling options.

Features

Standard Features

- **600S** Standard model
- **600L** Magnetic lock with red LED status indicator
- **600LB** Magnetic lock with red LED status indicator, bond sensor, and door status sensor.
- Built-in arc suppression
- Instant release, no hysteresis
- Self-drilling TEC screws
- Non-aluminum parts are plated to resist corrosion
- E-Z mount header bracket and template provided for easy installation, no special tools required
- Can be used with any access control system
- Clear anodized (US28) finish standard
- Limited lifetime warranty

Options

- **DURO** Duranodic finish (US 40) available, specify when ordering
- Dress covers in polished chrome and brass available. See "Magnetic Lock Accessories" for options.

Specifications

Certifications & Listings

- UL 294 listed
- UL 10C fire rated
- CAN/ULC-S104 fire door conformant
- UL 864 listed
- CAN/ULC-S527 listed

Holding Force

- 600 lbs

Dimensions

- Magnet size: 9-7/8" L x 1-11/16" H x 1" W
- Armature size: 7-1/4" L x 1-1/2" H x 1/2" W

Electrical

- 12 or 24 VDC, field selectable
- Current draw: 505 mA at 12 VDC, 260 mA at 24 VDC
- 600LB bond sensor has SPDT 3A relay contacts

Operating Temperature

- +14 to +131F [-10 to +55C]

600D, 600DLB

Double Magnetic Lock



Double magnetic lock with 600 lbs of force, per door, allows control of both doors within a double door configuration. Bracket mounted and easy to install double magnetic locks can be used with any access control system and are available with LED, bond sensor and door status signalling to ensure a securely powered and sealed double door.

Features

Standard Features

- **600D** Standard double magnetic lock
- **600DLB** Magnetic lock with indicating LED, bond sensor and door status sensor
- Built-in arc suppression
- Instant release, no hysteresis
- Self-drilling TEC screws
- Non-aluminum parts are plated to resist corrosion
- E-Z mount header bracket and template provided for easy installation, no special tools required
- Can be used with any access control system
- Clear anodized (US28) finish standard
- Limited lifetime warranty

Options

- **DURO** Duranodic finish (US 40) available, specify when ordering.
- Dress covers in polished chrome and brass available. See "Magnetic Lock Accessories" for options.

Specifications

Certifications & Listings

- UL 294 listed
- UL 10C fire rated
- CAN/ULC-S104 fire door conformant
- ULC-S527 listed
- UL-864 listed

Holding Force

- 600 lbs, per magnet

Dimensions

- Magnet size: 19-3/4" L x 1-7/8" H x 1" W
- Armature size: 7-1/4" L x 1-1/2" H x 5/8" W

Electrical

- 12 or 24 VDC, field selectable
- Current draw, per magnet: 505, mA at 12 VDC, 260 mA at 24 VDC
- 600DLB bond sensor has SPDT 3A relay contacts, per magnet

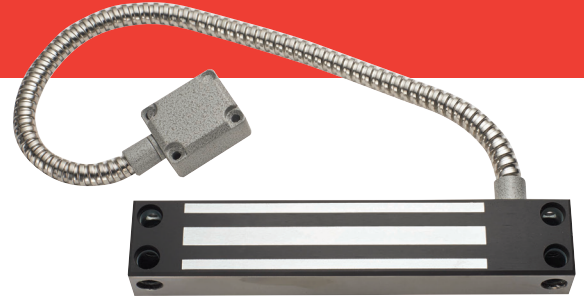
Operating Temperature

- +14 to +131F [-10 to +55C]

600WP

Weather Resistant Magnetic Gate Lock

Magnetic gate lock with 600 lbs of holding force provides weather resistant access control for perimeter applications. Ideal for sliding or swinging gates.



Features

Standard Features

- 12" color coded leads in armored cable with metal end cap
- Use 23/64" diameter drill for blind nuts provided with lock
- Self-drilling TEC screws
- Non-aluminum parts are plated to resist corrosion
- Top mount or side mount with brackets (order separately)
- Completely sealed in stainless steel case
- Ideal for sliding or swinging gates
- Clear anodized (US28) finish standard
- Limited lifetime warranty

Specifications

Holding Force

- 600 lbs

Dimensions

- Magnet size: 8-21/32" L x 1-9/32" H x 1-1/8" W
- Armature size: 7-9/32" L x 1-21/32" H x 1/2" W

Electrical

- Operates on 12 or 24 VDC, field configurable
- Current draw: 500 mA at 12 VDC, 250 mA at 24 VDC

Operating Temperature

- +14 to +131F [-10 to +55C]

1200S, 1200L, 1200LB

Single Magnetic Lock



Bracket mounted magnetic lock with 1200 lbs of holding force that can be easily installed without special tools and used with any access control system. Ideal for high-use areas for traffic control in interior or exterior applications. Available with LED, bond sensor and door status signalling options.

Features

Standard Features

- **1200S** Standard magnetic lock
- **1200L** Magnetic lock with indicating LED
- **1200LB** Magnetic lock with indicating LED, bond sensor and door status sensor
- Built-in arc suppression
- Instant release, no hysteresis
- Self-drilling TEC screws
- Non-aluminum parts are plated to resist corrosion
- E-Z mount header bracket and template provided for easy installation, no special tools required
- Can be used with any access control system
- Clear anodized (US28) finish standard
- Limited lifetime warranty

Options

- **DURO** Duranodic finish (US 40) available, specify when ordering.
- Dress covers in polished chrome and brass available. See "Magnetic Lock Accessories" for options.

Specifications

Certifications & Listings

- UL 294 listed
- UL 10C fire rated
- CAN/ULC-S104 fire door conformant
- ULC-S527 listed
- UL 864 listed

Holding Force

- 1200 lbs

Dimensions

- Magnet size: 10-1/2" L x 2-7/8" H x 1-1/2" W
- Armature size: 7-1/4" L x 2-3/8" H x 5/8" W

Electrical

- 12 or 24 VDC, field selectable
- Current draw: 505 mA at 12 VDC, 260 mA at 24 VDC
- 1200LB bond sensor has SPDT 3A relay contacts

Operating Temperature

- +14 to +131F [-10 to +55C]

1200D

Double Magnetic Lock



Built to provide 1200 lbs of holding force, per door, for double door configurations, this easy to install magnetic lock includes LED status indicator, bond sensor and door status sensor to signal a powered and securely locked door. Ideal for interior or exterior applications.

Features

Standard Features

- Built-in arc suppression
- Instant release, no hysteresis
- Self-drilling TEC screws
- Non-aluminum parts are plated to resist corrosion
- E-Z mount header bracket and template provided for easy installation, no special tools required
- Can be used with any access control system
- Bond sensor and door status sensors plus bi-color LEDs signal a powered and securely locked door
- Clear anodized (US28) finish standard
- Limited lifetime warranty

Options

- **DURO** Duranodic finish (US 40) available, specify when ordering.
- Dress covers in polished chrome and brass are available. See "Magnetic Lock Accessories" for options.

Specifications

Certifications & Listings

- UL 294 listed
- UL 10C fire rated
- CAN/ULC-S104 fire door conformant
- ULC-S527 listed
- UL 864 listed

Holding Force

- 1200 lbs, per magnet

Dimensions

- Magnet size: 21" L x 2-7/8" H x 1-1/2" W
- Armature size: 7-1/2" L x 2-3/8" H x 5/8" W

Electrical

- 12 or 24 VDC, field selectable
- Current draw, per magnet: 505 mA at 12 VDC, 260 mA at 24 VDC
- Bond sensor has SPDT 3A relay contacts, per magnet

Operating Temperature

- +14 to +131F [-10 to +55C]

1200WP

Weather Resistant Magnetic Gate Lock



Magnetic gate lock with 1200 lbs of holding force provides weather resistant access control for perimeter applications. Ideal for sliding or swinging gates.

Features

Standard Features

- 0.5" ID / 0.75" OD conduit fitting pipe thread
- 10" color coded wire leads in plastic jacket
- Blind nuts provided
- Self-drilling TEC screws
- Non-aluminum parts are plated to resist corrosion
- Top mount or side mount with L brackets (order separately)
- Completely sealed in stainless steel case
- Ideal for sliding or swinging gates
- Clear anodized (US28) finish standard
- Limited lifetime warranty

Specifications

Holding Force

- Up to 1200 lbs

Dimensions

- Magnet size: 9-1/16" L x 2-5/8" H x 1-1/16" W
- Armature size: 7-9/32" L x 2-5/8" H x 5/8" W

Electrical

- 12 or 24 VDC, field configurable
- Current draw: 500 mA at 12 VDC, 250 mA at 24 VDC

Operating Temperature

- +14 to +131F [-10 to +55C]

Lock N' A Box



A complete access control system in a convenient package.

LNB-6

Includes:

- One Model 600S UL listed magnetic lock
- One Model TS-2 UL listed request to exit station
- One Model KP-100A backlit keypad
- One 12 VDC, 700 mA UL listed plug-in power supply with leads
- Ideal for interior doors
- Limited lifetime warranty
- Available with **SREX-100** active request to exit motion sensor. Specify when ordering

| Model | Description |
|------------|---|
| LNB-6 | 600 lb Lock N' A Box |
| LNB-6-SREX | 600 lb Lock N' A Box, includes SREX-100 |

LNB-12

Includes:

- One Model 1200S UL listed magnetic lock
- One Model TS-2 UL listed request to exit station
- One Model KP-400 weatherproof, vandal resistant backlit keypad
- One 12 VDC, 700 mA UL listed plug-in power supply with leads
- Ideal for interior or exterior doors
- Limited lifetime warranty
- Available with **SREX-100** active request to exit motion sensor. Specify when ordering.

| Model | Description |
|-------------|--|
| LNB-12 | 1200 lb Lock N' A Box |
| LNB-12-SREX | 1200 lb Lock N' A Box, includes SREX-100 |

Magnetic Lock

Comparison Chart

| | 320S | 600S | 600L | 600LB | 600D | 600DLB | 600WP |
|---|---------|---------|---------|---------|--------------------|--------------------|---------|
| Holding Force | 300 lbs | 600 lbs | 600 lbs | 600 lbs | 600 lbs per magnet | 600 lbs per magnet | 600 lbs |
| Electrical | | | | | | | |
| 12 VDC Current Draw | 250 mA | 505 mA | 505 mA | 505 mA | 505 mA, per magnet | 505 mA, per magnet | 505 mA |
| 24 VDC Current Draw | 130 mA | 260 mA | 260 mA | 260 mA | 260 mA, per magnet | 260 mA, per magnet | 260 mA |
| Field Selectable 12 or 24 VDC ♦ | ● | ● | ● | ● | ● | ● | ● |
| ♦ Refer to catalog for additional information regarding electrical consumption. | | | | | | | |
| Specification | | | | | | | |
| UL 10C Listed | | ● | ● | ● | ● | ● | |
| UL 294 Listed | | ● | ● | ● | ● | ● | |
| CAN4-S104 / CAN-U LC-S533 Listed | | ● | ● | ● | ● | ● | |
| ULC-S527 Listed | | ● | ● | ● | ● | ● | |
| UL 864 Listed | | ● | ● | ● | | | |
| Features | | | | | | | |
| Bond Sensor | | | | ● | | ● | |
| Door Status Signal | | | | ● | | ● | |
| Status LED | | | ● | ● | | ● | |
| Door Application | | | | | | | |
| Glass Door w/ Aluminum Frame (Light Security) | ● | ● | ● | ● | ● | ● | ● |
| Wood Door (Light Security) | ● | ● | ● | ● | ● | ● | ● |
| Wood Door (High Security) | | | | | | | |
| Metal Door (Light Security) | ● | ● | ● | ● | ● | ● | ● |
| Metal Door (High Security) | | | | | | | |
| Herculite Door (w/out Top or Bottom Rail*) | | ● | ● | ● | ● | ● | |
| Herculite Door (w/Top or Bottom Rail*) | | ● | ● | ● | ● | ● | |
| Cabinets | ● | | | | | | ● |

● = Preferred application

* With correct mounting accessories

Magnetic Lock

Comparison Chart (cont.)

| | 1200S | 1200L | 1200LB | 1200D | 1200WP |
|---|----------|----------|----------|---------------------|----------|
| Holding Force | 1200 lbs | 1200 lbs | 1200 lbs | 1200 lbs per magnet | 1200 lbs |
| Electrical | | | | | |
| 12 VDC Current Draw | 505 mA | 505 mA | 505 mA | 505 mA, per magnet | 505 mA |
| 24 VDC Current Draw | 260 mA | 260 mA | 260 mA | 260 mA, per magnet | 260 mA |
| Field Selectable 12 or 24 VDC ♦ | ● | ● | ● | ● | |
| ♦ Refer to catalog for additional information regarding electrical consumption. | | | | | |
| Specification | | | | | |
| UL 10C Listed | ● | ● | ● | ● | |
| UL 294 Listed | ● | ● | ● | ● | |
| CAN4-S104 / CAN-ULC-S533 Listed | ● | ● | ● | ● | |
| ULC-S527 Listed | ● | ● | ● | ● | |
| UL 864 Listed | ● | ● | ● | ● | |
| Features | | | | | |
| Bond Sensor | | | ● | ● | |
| Door Status Signal | | | ● | ● | |
| Status LED | | ● | ● | ● | |
| Door Application | | | | | |
| Glass Door (w/ Aluminum Frame) | | | | | |
| Wood Door (Light Security) | | | | | |
| Wood Door (High Security) | ● | ● | ● | ● | ● |
| Metal Door (Light Security) | | | | | |
| Metal Door (High Security) | ● | ● | ● | ● | ● |
| Herculite Door (w/out Top or Bottom Rail*) | ● | ● | ● | ● | |
| Herculite Door (w/Top or Bottom Rail*) | ● | ● | ● | ● | |
| Cabinets | | | | | |

● = Preferred application
 * With correct mounting accessories

Magnetic Lock Accessories

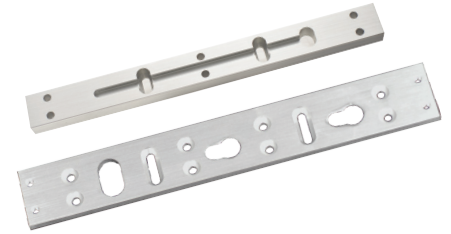


Magnetic Lock Accessories

Drop Down Plates for Single Locks

Spacer plates for single magnetic locks

| PART NUMBER | DESCRIPTION | DIMENSIONS | FINISH |
|-------------|-------------------------------|----------------------------|-----------------------|
| AM3300 | 1/2" spacer for 600 lb. lock | 9-7/8"L x 1"W x 1/2"D | Clear anodized (US28) |
| AM3305 | 5/8" spacer for 600 lb. lock | 9-7/8"L x 1"W x 5/8"D | Clear anodized (US28) |
| AM3330 | 1/4" spacer for 600 lb. lock | 9-7/8"L x 1"W x 1/4"D | Clear anodized (US28) |
| AM6300 | 1/2" spacer for 1200 lb. lock | 10-1/2"L x 1-1/2"W x 1/2"D | Clear anodized (US28) |
| AM6305 | 5/8" spacer for 1200 lb. lock | 10-1/2"L x 1-1/2"W x 5/8"D | Clear anodized (US28) |
| AM6330 | 1/4" spacer for 1200 lb. lock | 10-1/2"L x 1-1/2"W x 1/4"D | Clear anodized (US28) |
| AM6330-DURO | 1/4" spacer for 1200 lb. lock | 10-1/2"L x 1-1/2"W x 1/4"D | Duranodic (US40) |



Drop Down Plates for Double Locks

Spacer plates for double magnetic locks

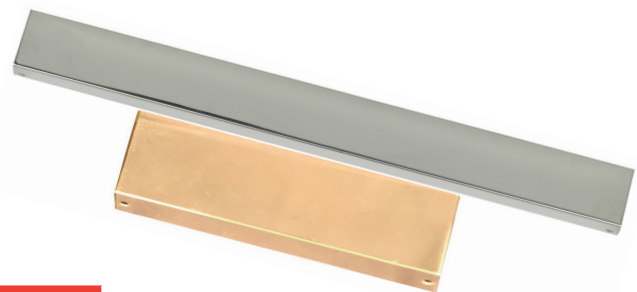
| PART NUMBER | DESCRIPTION | DIMENSIONS | FINISH |
|-------------|-------------------------------|------------------------|------------------------|
| AM3331 | 1/4" spacer for 600 lb. lock | 19-3/4"L x 1"W x 1/4"D | Clear anodized (US28) |
| AM3332 | 1/2" spacer for 600 lb. lock | 19-3/4"L x 1"W x 1/2"D | Clear anodized (US28) |
| AM6331 | 1/4" spacer for 1200 lb. lock | 21"L x 1-1/2"W x 1/4"D | Clear anodized (US 28) |
| AM6332 | 1/2" spacer for 1200 lb. lock | 21"L x 1-1/2"W x 1/2"D | Clear anodized (US 28) |



DUC Dress Covers

For 600 and 1200 lbs Magnetic Locks

- For both single and double magnetic locks
- Easy to install and retrofit existing installations
- Available with Polished Brass and Polished Chrome finishes
- Painted finishes available for all dress covers



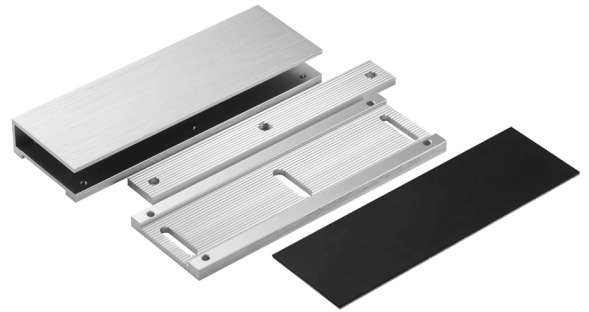
| PART NUMBER | DESCRIPTION |
|---------------|--|
| DUC-1B/DUC-1C | 600S Magnetic Lock Dress Cover, Polished Brass (B) or Chrome (C) |
| DUC-2B/DUC-2C | 600L Magnetic Lock Dress Cover, Polished Brass (B) or Chrome (C) |
| DUC-3B/DUC-3C | 600LB Magnetic Lock Dress Cover, Polished Brass (B) or Chrome (C) |
| DUC-4B/DUC-4C | 600D Magnetic Lock Dress Cover, Polished Brass (B) or Chrome (C) |
| DUC-5B/DUC-5C | 600DLB Magnetic Lock Dress Cover, Polished Brass (B) or Chrome (C) |
| DUC-6B/DUC-6C | 1200S Magnetic Lock Dress Cover, Polished Brass (B) or Chrome (C) |
| DUC-7B/DUC-7C | 1200L Magnetic Lock Dress Cover, Polished Brass (B) or Chrome (C) |
| DUC-8B/DUC-8C | 1200LB Magnetic Lock Dress Cover, Polished Brass (B) or Chrome (C) |
| DUC-9B/DUC-9C | 1200D Magnetic Lock Dress Cover, Polished Brass (B) or Chrome (C) |

Magnetic Lock Accessories

GDH Glass Door Holder

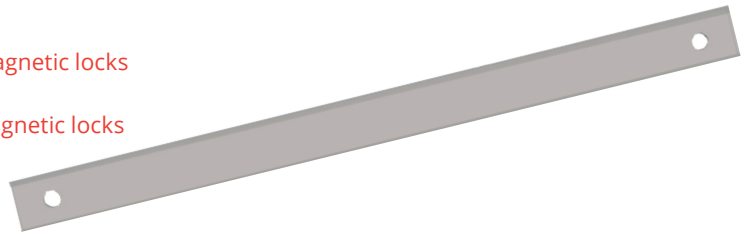
For 600 and 1200 lbs Magnetic Locks

- Size: 7-5/16" L x 1-3/8" W x 2-1/2" H
- Glass thickness: 1/2" – 5/8"
- Minimum clearance between top of door and door header: 13/64"
- Armature adjustment range: 1"
- Compression mounts armature on frameless glass doors
- Clear anodized (US28) standard finish



Filler Plates

- AM6360: 5/8" filler plate for all 600 and 1200 series magnetic locks
 - Size: AM6360: 10-1/2" L x 3/4" W x 5/8" Thick
- AM6361: 1/2" filler plate for all 600 and 1200 series magnetic locks
 - Size: AM6361: 10-1/2" L x 3/4" W x 1/2" Thick
- Clear Anodized (US28) standard finish



Installation Tools

- **DJ-1 Magnetic Lock Installation Drill Jig**
 - Designed for accurate and fast installation of magnetic locks
 - Compatible with: 600S, 600L, 600LB, 1200S, 1200L, 1200LB
 - 6" drill bit included
- **DB-1 Drill Bit**
 - 8.9MM Drill Bit for Installing Brass Rivet Nuts when mounting weather resistant locks

(Grey metal box shown; actual metal box is white)



JN-1

Jack Nuts

Provide a reliable and secure method for mounting magnetic locks in metal door frames that are 3/16" thick or less. During installation the body of the jack nut collapses on the back side to form legs which grip the inside of the mounting surface.

- **JN-1 Jack Nut Tool Kit**
 - Jack nut tool kit includes the following: Jack nut installation tool, 25/64" drill bit, 5M mandrel installed in installation tool, 50-5M jack nuts, 50-5M x .75" flat head Phillips machine screws, 1 each of 3M, 4M and 6M mandrel, Metal tool box (holds all items)
 - **JN-50 Pack of 50 (also available separately)**



DJ-1

Magnetic Lock Accessories

L Brackets

Fixed Single and Double Lock Brackets; Adjustable Single Lock Mounting Brackets

- Fixed single lock L brackets for 600 or 1200 lbs magnetic locks;
Option to include cover.
- Adjustable single lock L bracket for 600 or 1200 lbs magnetic locks
- Fixed double lock L bracket for 600 and 1200 double magnetic locks
- For Duranodic finish US40 (Dark Bronze), please contact the factory



| PART NUMBER | DESCRIPTION | DIMENSIONS | FINISH |
|---|--|------------------------------|-----------------------|
| Fixed Single Lock Brackets: | | | |
| AM3320 | 1/4" L bracket for 600 Series locks | 9-7/8"L x 1" x 1-1/2" | Clear anodized (US28) |
| AM3320C | L bracket for 600 Series single magnetic locks with cover | | Clear anodized (US28) |
| AM6320 | 5/16" L bracket for 1200 Series locks with cover | 10-1/2"L x 1-1/2" x 1" | Clear anodized (US28) |
| AM6320C | L bracket for 1200 Series single magnetic locks with cover | | Clear anodized (US28) |
| Adjustable Single Lock Brackets: | | | |
| AM3325 | 3/16" adjustable L bracket for 600 Series locks | 9-7/8"L x 1-7/8" x 1-3/16" | Clear anodized (US28) |
| AM6325 | 1/4" adjustable L bracket for 1200 Series locks | 10-1/2"L x 2-5/16" x 2-5/16" | Clear anodized (US28) |
| Fixed Double Lock Brackets: | | | |
| AM3326 | 5/16" L bracket for 600D and 600DLB Series double locks | 19-3/4"L x 1-1/2" x 1" | Clear anodized (US28) |
| AM6326 | 1/4" L bracket for 1200D Series double locks | 21"L x 1" x 1-1/2" | Clear anodized (US28) |



Z Brackets

Decorative Z Bracket with Integrated Dress Cover

- Adjustable mounting bracket for 600 or 1200 lbs Series Single Magnetic Locks
- For use on in-swinging doors
- **AM3370C** for magnetic lock models: 600S, 600L and 600LB
 - Adjustment range: 2" - 2.75"
 - Bracket dimensions: 10"L x 3.5"H
- **AM6370C** for magnetic lock models: 1200S, 1200L and 1200LB
 - Adjustment range: 2.375" - 3.5"
 - Bracket dimensions: 10.625"L x 4.25"H
- For Duranodic finish US40 (Dark Bronze), please contact the factory



| PART NUMBER | DESCRIPTION | FINISH |
|---|--|-----------------------|
| Z Bracket for 600 Series Single Magnetic Locks | | |
| AM3370 | Z bracket for 600 Series single magnetic locks | Clear anodized (US28) |

Magnetic Lock Accessories

Z Brackets

Decorative Z Bracket with Integrated Dress Cover

| PART NUMBER | DESCRIPTION | FINISH |
|---|---|-----------------------|
| Z Bracket for 600 Series Single Magnetic Locks | | |
| AM3370C | Z bracket with integrated dress cover for 600 Series single magnetic locks | Clear anodized (US28) |
| Z Brackets for 600 Series Double Magnetic Locks | | |
| AM3375 | Z bracket for 600 Series double magnetic locks | Clear anodized (US28) |
| Z Brackets for 1200 Series Single Magnetic Locks | | |
| AM6370 | Z bracket for 1200 Series single magnetic locks | Clear anodized (US28) |
| AM6370C | Z bracket with integrated dress cover for 1200 Series single magnetic locks | Clear anodized (US28) |
| Z Brackets for 1200 Series Double Magnetic Locks | | |
| AM6375 | Z bracket for 1200 Series double magnetic locks | Clear anodized (US28) |



Armature and Mounting Plates

| PART NUMBER | DESCRIPTION | DIMENSIONS | FINISH |
|---|--|-----------------------------|-----------------------|
| Armature housing for use on freezer and extra thick doors: | | | |
| AM3310 | Armature housing for 600 Series | 7-7/8"L x 2-1/8"W x 5/8"D | Clear anodized (US28) |
| AM6310 | Armature housing for 1200 Series | 8-1/4"L x 3"W x 5/8"D | Clear anodized (US28) |
| Armature plate for 600 and 1200 Series Magnetic Plates: | | | |
| AM3335 | Armature plate for 600 Series | 7-1/4"L x 1-7/16"W x 9/16"D | Clear anodized (US28) |
| AM6335A | Armature plate for 1200LB, 1200D | 7-1/2"L x 2-5/16"W x 5/8"D | Clear anodized (US28) |
| Offset armature plate for 600 and 1200 Series Magnetic Plates: | | | |
| AM6338 | Offset armature for 1200 Series | 7-1/2"L x 2-5/16"W x 5/8"D | Clear anodized (US28) |
| Armature Spacer for 600 and 1200 Series: | | | |
| AM3315 | 1/4" armature spacer for 600 and 1200 Series magnetic locks. Supplied with armature plate mounting hardware. Can be used to mount plate on thick doors | 19-3/4"L x 1-1/2" x 1" | Clear anodized (US28) |



Cross Reference Guide



MODEL 320S
300 lbs Single Lock
Ideal for cabinets and showcases



MODEL 600S
600 lbs Single Lock
Recommended for interior doors



MODEL 600L
600 lbs Single Lock with status LED
Recommended for interior doors



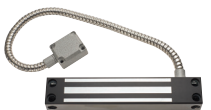
MODEL 600LB
600 lbs Single Lock with Bond Sensor, Door Status Sensor and LED
Recommended for interior doors



MODEL 600D
600 lbs Double Lock
Recommended for interior doors

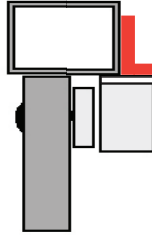


MODEL 600DLB
600 lbs Double Lock with Bond Sensor, Door Status Sensor and LED
Recommended for interior doors



MODEL 600WP
600 lbs Weatherproof Gate Lock
Recommended for exterior gates

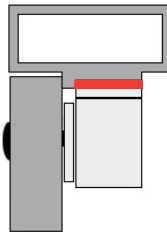
300 and 600 Series Maglocks



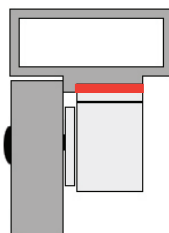
| L-Brackets | | | | |
|------------|--------|---------|--------|--------|
| | AM3320 | AM3320C | AM3325 | AM3326 |
| 320S | | | | |
| 600S | ● | ● | ● | |
| 600D | | | | ● |
| 600DLB | | | | ● |
| 600L | ● | ● | ● | |
| 600WP | | | | |



| Z-Brackets | | | |
|------------|--------|---------|--------|
| | AM3370 | AM3370C | AM3375 |
| 320S | | | |
| 600S | ● | ● | |
| 600D | | | ● |
| 600DLB | | | ● |
| 600L | ● | ● | |
| 600WP | ● | | |



| Drop Down Plates for Single Locks | | | |
|-----------------------------------|--------|--------|--------|
| | AM3300 | AM3305 | AM3330 |
| | 1/2" | 5/8" | 1/4" |
| 320S | | | |
| 600S | ● | ● | ● |
| 600L | ● | ● | ● |
| 600LB | ● | ● | ● |
| 600WP | | | |



| Drop Down Plates for Double Locks | | |
|-----------------------------------|--------|--------|
| | AM3331 | AM3332 |
| | 1/4" | 1/2" |
| 600D | ● | ● |
| 600DLB | ● | ● |

Cross Reference Guide (cont.)



MODEL 1200S
1200 lbs Single Lock
Recommended for exterior doors



MODEL 1200L
1200 lbs Single Lock with status LED
Recommended for exterior doors



MODEL 1200LB
1200 lbs Single Lock with Bond Sensor, Door Status Sensor and LED
Recommended for exterior doors

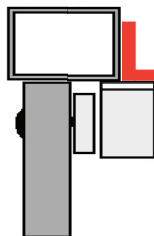


MODEL 1200D
1200 lbs Double Lock with Bond Sensor, Door Status Sensor and LED
Recommended for exterior doors

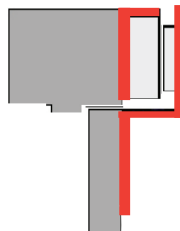


MODEL 1200WP
1200 lbs Weatherproof Gate Lock
Recommended for exterior gates

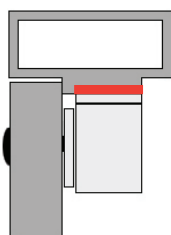
1200 Series Maglocks



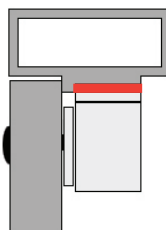
| L-Brackets | | | | |
|------------|--------|---------|--------|--------|
| | AM6320 | AM6320C | AM6325 | AM3326 |
| 1200S | ● | ● | ● | |
| 1200D | | | | |
| 1200DLB | ● | ● | ● | ● |
| 1200L | ● | ● | ● | ● |
| 1200WP | | | | |



| Z-Brackets | | | |
|------------|--------|---------|--------|
| | AM6370 | AM6370C | AM6375 |
| 1200S | ● | ● | |
| 1200D | | | ● |
| 1200DLB | | | ● |
| 1200L | ● | ● | |
| 1200WP | ● | | |



| Drop Down Plates for Single Locks | | | |
|-----------------------------------|--------|--------|--------|
| | AM6300 | AM6305 | AM6330 |
| | 1/2" | 5/8" | 1/4" |
| 1200S | ● | ● | ● |
| 1200L | ● | ● | ● |
| 1200LB | ● | ● | ● |
| 1200WP | | | |



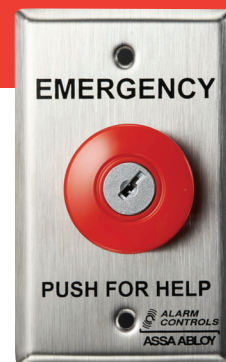
| Drop Down Plates for Double Locks | | |
|-----------------------------------|--------|--------|
| | AM6331 | AM6332 |
| | 1/2" | 5/8" |
| 1200D | ● | ● |

Request to Exit Stations & Egress Devices



KR Series

Latching Panic Stations with Key Reset



Single gang panic station with latching key reset. Once activated the push button automatically latches, requiring the use of a key to reset. Ideal for applications requiring a personal response to an alarm condition. Choice of contact configurations ensures compatibility with most systems.

Features

Standard Features

- Single gang stainless steel wall plate, weather resistant to IP40 standards
- 1-1/2" red mushroom button
- Plate screened "EMERGENCY PUSH FOR HELP" to quickly call for assistance
- Alternate action switch

Options

- Plates: multiple finishes and widths available, specify when ordering
- **KR-1KEY** Replacement key

Specifications

Certifications & Listings

- Conforms to IP40

Electrical

- Available in any combination of N/O and/or N/C contact pairs. See table below.
- Contacts rated 10A at 35 VDC or 120 VAC
- Switch connection via screw terminals
- Switch depth behind plate: 2"

Operating Temperature

- -13F to +158 F (-25 to 70 C)

How To Order

| MODEL | CONTACTS | PLATE | GUARD RING |
|-----------------------------|-----------------------------------|-------------------------|-------------------|
| KR | 1 | 4 | GR |
| KR Latching Key Reset | 1 - One N/O pair and one N/C pair | 1 - 302 Stainless Steel | GR Guard Ring |
| | 2 - 2 N/O pairs | 2 - White | LUC Lift Up Cover |
| | 3 - 2 N/C pairs | 3 - Ivory | (blank) NONE |
| | 4 - 1 N/C pair | 4 - Red | |
| | | 5 - 1-3/4" Stainless | |
| | | 6 - 1-3/4" Red | |

TS-32

Latching Panic Stations

Single gang panic station with latching push button switch that remains active or inactive until actuated again.



TS-32R

Features

Standard Features

- Single gang stainless steel wall plate, weather resistant to IP65 standards
- 1-1/2" red mushroom button
- Plate screened "PUSH FOR EMERGENCY DOOR RELEASE"
- Alternate action switch

Options

- **TS-32B** Black mushroom button
- **TS-32G** Green mushroom button

Specifications

Certifications & Listings

- UL and CSA certified components
- Conforms to IP65

Electrical

- Available in any combination of N/O and/ or N/C contact pairs.
- Contacts rated 10A at 35 VDC or 120 VAC
- Switch connection via screw terminals
- Switch depth behind plate: 2"

Operating Temperature

- -13F to +158 F (-25 to 70 C)

PBL Series

Latching Panic Stations



Single gang panic station with latching push button switch that remains active or inactive until actuated again. Choice of contact configurations ensures compatibility with most systems.

Features

Standard Features

- Single gang stainless steel wall plate, weather resistant to IP65 standards
- 1-1/2" red mushroom button
- Plate screened "EMERGENCY PUSH FOR HELP" to quickly call for assistance
- Alternate action switch

Options

- Plate: multiple finishes and widths available, specify when ordering
- Illumination: long life LED in 6V, 12V, 24V, 120V, specify when ordering
- **GR** Guard Ring
- **LUC** Lift up cover

Specifications

Certifications & Listings

- Conforms to IP65

Electrical

- Available in any combination of N/O and/or N/C contact pairs. See table below.
- Contacts rated 10A at 5 VDC or 120 VAC
- Switch connection via screw terminals
- Switch depth behind plate: 2-1/2"

Operating Temperature

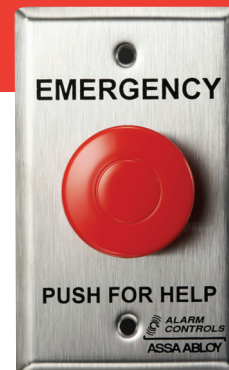
- -13F to +158F (-25 to 70 C)

How To Order

| MODEL | CONTACTS | PLATE | ILLUMINATION | GUARD RING |
|------------------------------------|--|--------------------------------|--------------------|--------------------------|
| PBL | 1 | 4 | L2 | GR |
| PBL Latching Operator | 1 - One N/O pair and one N/C pair | 1 - 302 Stainless Steel | L1 - 6VDC | GR Guard Ring |
| | 2 - 2 N/O pairs | 2 - White | L2 - 12VDC | LUC Lift Up Cover |
| | 3 - 2 N/C pairs | 3 - Ivory | L3 - 24VDC | (blank) NONE |
| | 4 - 1 N/C pair | 4 - Red | L4 - 120VAC | |
| | | 5 - 1-3/4" Stainless | | |
| | | 6 - 1-3/4" Red | | |

PBM Series

Momentary Panic Stations



Single gang panic station with momentary push button switch that remains active as long as it's depressed. Choice of contact configurations ensures compatibility with most systems

Features

Standard Features

- Single gang stainless steel wall plate, weather resistant to IP65 standards
- 1-1/2" red mushroom button
- Plate screened "EMERGENCY PUSH FOR HELP" to quickly call for assistance
- Momentary action switch

Options

- Plate: multiple plate finishes and widths available, specify when ordering
- Illumination: long life LED in 6V, 12V, 24V, 120V, specify when ordering
- **GR** Guard Ring
- **LUC** Lift up cover

Specifications

Certifications & Listings

- Conforms to IP65

Electrical

- Available in any combination of N/O and/or N/C contact pairs. See table below.
- Contacts rated 10A at 35 VDC or 120 VAC
- Switch connection via screw terminals
- Switch depth behind plate: 2-1/2"

Operating Temperature

- -13F to +158 F (-25 to 70 C)

How To Order

| MODEL | CONTACTS | PLATE | ILLUMINATION | GUARD RING |
|-------------------------------------|--|--------------------------------|--------------------|--------------------------|
| PBM | 1 | 4 | L2 | GR |
| PBM Momentary Operator | 1 - One N/O pair and one N/C pair | 1 - 302 Stainless Steel | L1 - 6VDC | GR Guard Ring |
| | 2 - 2 N/O pairs | 2 - White | L2 - 12VDC | LUC Lift Up Cover |
| | 3 - 2 N/C pairs | 3 - Ivory | L3 - 24VDC | (blank) NONE |
| | 4 - 1 N/C pair | 4 - Red | L4 - 120VAC | |
| | | 5 - 1-3/4" Stainless | | |
| | | 6 - 1-3/4" Red | | |

EB Series

Request to Exit Egress Stations



Single gang request to exit egress station with momentary push button switch that remains active as long as button is depressed. Choice of contact configurations ensures compatibility with most systems.

Features

Standard Features

- Single gang stainless steel wall plate
- 1-1/2" red mushroom button
- Plate screened "EXIT"
- Momentary action switch

Options

- Plate: multiple finishes and widths available, specify when ordering
- Illumination: long life LED in 6V, 12V, 24V, 120V, specify when ordering
- **GR** Guard Ring
- **LUC** Lift up cover

Specifications

Certifications & Listings

- UL and CSA certified components

Electrical

- Available in any combination of N/O and/or N/C contact pairs. See table below.
- Contacts rated 10A at 35 VDC or 120 VAC
- Switch connection via screw terminals
- Switch depth behind plate: 2-1/2"

Operating Temperature

- -13F to +158F

How To Order

| MODEL | CONTACTS | PLATE | ILLUMINATION | GUARD RING |
|------------------------------------|--|--------------------------------|--------------------|--------------------------|
| EB | 1 | 4 | L2 | GR |
| EB Momentary Operator | 1 - One N/O pair and one N/C pair | 1 - 302 Stainless Steel | L1 - 6VDC | GR Guard Ring |
| | 2 - 2 N/O pairs | 2 - White | L2 - 12VDC | LUC Lift Up Cover |
| | 3 - 2 N/C pairs | 3 - Ivory | L3 - 24VDC | (blank) NONE |
| | 4 - 1 N/C pair | 4 - Red | L4 - 120VAC | |
| | | 5 - 1-3/4" Stainless | | |
| | | 6 - 1-3/4" Red | | |

TS-1

Request to Exit Station

The TS-1 single gang request to exit station with push button and LEDs provides a convenient way to monitor the lock station. LED status indicators provide an at-a-glance visual of system status.



TS-1

Features

Standard Features

- Switch mounted on single gang wall plate with 430 stainless steel finish
- Large 1-1/2" green mushroom button
- Plate labeled "PUSH TO EXIT" for easy to follow egress instructions
- 1/4" red and green LED status indicators; illuminated with hi-brightness LED
- Momentary action switch

Options

- **TS-1L** with alternate action switch
- **TS-1R** with red mushroom push button
- Finishes: multiple plate finishes available
- Other contact combinations available as custom part

Specifications

Certifications & Listings

- UL 294 listed
- CSA Certified components

Electrical

- One N/O and N/C contact
- Contacts rated 10A at 35 VDC or 120 VAC
- Switch connection via screw terminals
- Switch depth behind plate: 2"
- LEDs operates on 12 or 24 VAC/VDC, independently wired

Operating Temperature

- -13F to +158 F (-25 to 70 C)

TS-2

Request to Exit Station

The TS-2 request to exit station, with square push button, provides a convenient way to add authorized access control to a variety of applications.



TS-2

Features

Standard Features

- Switch mounted on single gang wall plate with 430 stainless steel finish
- 2" green square push button; Illuminated with hi-brightness LED
- Button labeled "PUSH TO EXIT" for easy to follow egress instructions
- Momentary SPDT action switch

Options

- **TS-2-2** with momentary DPDT output (one set of momentary, one set of timed contacts)
- **TS-2R** with red push button
- **TS-2ENTER** button labeled "PUSH TO ENTER"
- **TS-2BLANK** button left blank
- **856LEDSM** Replacement LED (5 pack)
- Finishes: multiple plate options available
- Custom legends available as custom part

Specifications

Certifications & Listings

- UL 294 listed

Electrical

- SPDT timed contacts, rated 10A at 35 VDC or 120 VAC
- Switch depth behind plate: 2-1/2"
- Switch terminated with 10" colored leads
- LED operates on 12 or 24 VAC/VDC

TS-2T

Request to Exit Station with Electronic Timer



TS-2T

The TS-2T request to exit station with electronic timer and square push button, provides convenient way to keep the door unlocked for a specified amount of time, allowing for easy entry or egress. The door will relock when the relay time has expired.

Features

Standard Features

- Switch mounted on single gang wall plate with 430 stainless steel finish
- 2" green square push button; illuminated with hi-brightness LED
- Button labeled: "PUSH TO EXIT" for easy to follow egress instructions
- Momentary SPDT timed output
- Timer delay is adjustable 2 to 45 seconds

Options

- **TS-2TD** with DPDT dual timed output
- **TS-2-2T** with two SPDT outputs (one set of momentary, one set of timed contacts)
- **TS-2TRED** with red push button
- **TS-2TENTER** button labeled "PUSH TO ENTER"
- **TS-2TBLANK** button left blank
- **856LEDSM** Replacement LED (5 pack)
- Custom legends available as custom part

Specifications

Certifications & Listings

- UL 294 listed

Electrical

- SPDT timed contacts, rated 2A at 35 VDC
- Switch depth behind plate: 2-1/2"
- Switch terminated with 10" colored leads
- LED operates on 12 or 24 VAC/VDC

TS-3

Request to Exit Station

The TS-3 request to exit station with push button and single LED, provides a convenient way to add authorized access control for a variety of applications. LED status indicator offers an at-a-glance visual of system status.



TS-3

Features

Standard Features

- Switch mounted on single gang wall plate with 430 stainless steel finish
- 2" green square push button; illuminated with hi-brightness LED
- Button labeled: "PUSH TO EXIT" for easy to follow egress instructions
- 1/2" bright red LED status indicator
- Momentary SPDT action switch

Options

- **TS-3-2** with momentary DPDT output
- **TS-3ENTER** button labeled "PUSH TO ENTER"
- **TS-3BLANK** button left blank
- Finishes: multiple plate options available
- Custom legends available as custom part

Specifications

Certifications & Listings

- UL 294 listed

Electrical

- SPDT timed contacts, rated 10A at 35 VDC or 120 VAC
- Switch depth behind plate: 2-1/2"
- Switch terminated with 10" colored leads
- LED operates on 12 or 24 VAC/VDC

TS-3T

Request to Exit Station with Electronic Timer



TS-3T

The TS-3T request to exit station with electronic timer and square push button, provides a convenient way to keep the door unlocked for a specified amount of time, allowing for easy entry or egress. The door will relock when the relay time has expired. LED status indicator offers an at-a-glance visual of system status.

Features

Standard Features

- Switch mounted on single gang wall plate with 430 stainless steel finish
- 2" green square push button; illuminated with hi-brightness LED
- Button labeled: "PUSH TO EXIT" for easy to follow egress instructions
- 1/2" illuminated red LED status indicator
- Momentary SPDT timed output
- Timer delay is adjustable 2 to 45 seconds

Options

- **TS-3TD** with DPDT dual timed output
- **TS-3-2T** with two SPDT outputs (one set of momentary, one set of timed contacts)
- Custom legends and finishes available as custom part

Specifications

Certifications & Listings

- UL 294 listed

Electrical

- SPDT timed contacts, rated 2A at 35 VDC
- Switch depth behind plate: 2-1/2"
- Switch terminated with 10" colored leads
- LED operates on 12 or 24 VAC/VDC

TS-4

Request to Exit Station

The TS-4 request to exit station, with square push button, provides a convenient way to add authorized access control to a variety of applications. Blue push button is labeled with ADA symbol to indicate accessibility compliance.



TS-4

Features

Standard Features

- Switch mounted on single gang wall plate with 430 stainless steel finish
- 2" blue square push button; Illuminated with hi-brightness LED
- Button labeled with ADA symbol
- Momentary SPDT action switch

Options

- **TS-4-2** with momentary DPDT output (one set of momentary, one set of timed contacts)
- Finishes: multiple plate options available

Specifications

Certifications & Listings

- UL 294 listed

Electrical

- SPDT timed contacts, rated 10A at 35 VDC or 120 VAC
- Switch depth behind plate: 2-1/2"
- Switch terminated with 10" colored leads
- LED operates on 12 or 24 VAC/VDC

TS-4T

Request to Exit Station with Electronic Timer

The TS-4T request to exit station with electronic timer and square push button, provides a convenient way to keep the door unlocked for a specified amount of time, allowing for easy entry or egress. The door will relock when the relay time has expired. Blue push button is labeled with ADA symbol to indicate accessibility compliance.



TS-4T

Features

Standard Features

- Switch mounted on single gang wall plate with 430 stainless steel finish
- 2" blue square push button; illuminated with hi-brightness LED
- Button labeled with ADA symbol
- Momentary SPDT timed output
- Time delay is adjustable 2 to 44 seconds

Options

- **TS-4TD** with DPDT with dual timed output
- **TS-4-2T** with two SPDT outputs (one set of momentary, one set of timed contacts)
- Custom plate finishes available as custom part

Specifications

Certifications & Listings

- UL 294 listed

Electrical

- SPDT timed contacts, rated 2A at 35 VDC
- Switch depth behind plate: 2-1/2"
- Switch terminated with 10" colored leads
- LED operates on 12 or 24 VAC/VDC

TS-5

Request to Exit Station

The TS-5 request to exit station, with push button and single LED, provides a convenient way to add authorized access control for a variety of applications. Blue push button is labeled with ADA symbol to indicate accessibility compliance. LED status indicator offers an at-a-glance visual of system status.



TS-5

Features

Standard Features

- Switch mounted on single gang wall plate with 430 stainless steel finish
- 2" blue square push button; illuminated with hi-brightness LED
- Button labeled with ADA symbol
- 1/2" bright red LED status indicator
- Momentary SPDT action switch

Options

- **TS-5-2** with momentary DPDT output
- Finishes: multiple plate options available

Specifications

Certifications & Listings

- UL 294 listed

Electrical

- SPDT timed contacts, rated 10A at 35 VDC or 120 VAC
- Switch depth behind plate: 2-1/2"
- Switch terminated with 10" colored leads
- LED operates on 12 or 24 VAC/VDC

TS-5T Series

Request to Exit Station with Electronic Timer

The TS-5T request to exit station with electronic timer, square push button and single LED, provides a convenient way to keep the door unlocked for a specified amount of time, allowing easy entry or egress. The door will relock when the relay time has expired. Blue push button is labeled with ADA symbol to indicate accessibility compliance. LED status indicator offers an at-a-glance visual of system status.



TS-5T

Features

Standard Features

- Switch mounted on single gang wall plate with 430 stainless steel finish
- 2" blue square push button; illuminated with hi-brightness LED
- Button labeled with ADA symbol
- 1/2" red LED status indicator
- Momentary SPDT timed output
- Time delay is adjustable 2 to 44 seconds

Options

- **TS-5TD** with DPDT dual timed output
- **TS-5-2T** two SPDT outputs (one set of momentary, one set of timed contacts)
- Custom plate finishes available as custom part

Specifications

Certifications & Listings

- UL 294 listed

Electrical

- SPDT timed contacts, rated 2A at 35 VDC
- Switch depth behind plate: 2-1/2"
- Switch terminated with 10" colored leads
- LED operates on 12 or 24 VAC/VDC

TS-6, TS-8

Request to Exit Stations with LEDs

The single gang TS-6 and narrow stile TS-8 request to exit stations, with rectangular push button and LED status indicators, provide a convenient way to add authorized access control for a variety of applications. Red and green LED offer an at-a-glance visual indication of system status. TS-6 and TS-8 are available with timer relay for applications that require door to remain unlocked for a specified time.



TS-6

TS-8

Features

Standard Features

- **TS-6** switch mounted on single gang wall plate with 430 stainless steel finish
- **TS-8** switch mounted on narrow 1-3/4" wall plate with 302 stainless steel finish
- 5/8" x 7/8" green rectangular push button; illuminated with hi-brightness LED
- Button labeled "PUSH TO EXIT" for easy to follow egress instructions
- 1/4" red and green LED status indicators
- Momentary DPDT action switch

Options

- **TS-6L, TS-8L** with latching action switch
- **TS-6T, TS-8T** with timed output
 - Timer is adjustable 2 to 45 seconds
- Finishes: multiple plate options available
- Custom legends available as custom part

Specifications

Certifications & Listings

- UL 294 listed

Electrical

- DPDT timed contacts, rated 3A at 35 VDC or 120 VAC
- Timed output is SPDT contacts, rated 2A at 35 VDC
- Switch depth behind plate: 1-1/4"
- Switch terminated with 10" colored leads
- LED operates on 12 or 24 VAC/VDC

Operating Temperature

- -13F to +158 F (-25 to 70 C)

TS-7, TS-9

Request to Exit Station

The single gang TS-7 and narrow stile TS-9 request to exit stations with rectangular push button, provide a convenient way to add authorized access control for a variety of applications. TS-7 and TS-9 are available with timer relay for applications that require door to remain unlocked for a specified time.



TS-7

TS-9

Features

Standard Features

- **TS-7** switch mounted on single gang wall plate with 430 stainless steel finish
- **TS-9** switch mounted on narrow 1-3/4" wall plate with 302 stainless steel finish
- 5/8" x 7/8" green rectangular push button; illuminated with hi-brightness LED
- Button labeled "PUSH TO EXIT" for easy to follow egress instructions
- Momentary DPDT action switch

Options

- **TS-7L, TS-9L** with latching action switch
- **TS-7T, TS-9T** with timed output
 - Timer is adjustable 2 to 45 seconds
- Finishes: multiple plate options available
- Custom legends available as custom part

Specifications

Certifications & Listings

- UL 294 listed

Electrical

- DPDT timed contacts, rated 3A at 35 VDC or 120 VAC
- Timed output is SPDT contacts rated 2A at 35VDC
- Switch depth behind plate: 1-1/4"
- Switch terminated with 10" colored leads
- LED operates on 12 or 24 VAC/VDC

Operating Temperature

- -13F to +158 F (-25 to 70 C)

TS-21

Request to Exit Station

The TS-21 request to exit station with push button, provides a convenient way to add authorized access control for a variety of applications. Extra-large 2-1/2" mushroom push button offers a large target for easy entry or egress and is available in multiple colors.



TS-21R

TS-21G

Features

Standard Features

- Switch mounted on single gang wall plate with 402 stainless steel finish
- Extra large 2-1/2" mushroom push button
- Plate labeled "PUSH TO EXIT" for easy to follow egress instructions
- Momentary action switch

Options

- **TS-21B** with black mushroom button
- **TS-21G** with green mushroom button
- **TS-21R** with red mushroom button
- Finishes: multiple plate finishes available
- Custom screening available

Specifications

Electrical

- One N/O and N/C contact, rated 10A at 35 VDC or 120 VAC
- Switch depth behind plate: 2"
- Switch connection via screw terminals

Operating Temperature

- -13F to +158 F (-25 to 70 C)

TS-27

Request to Exit Station

The narrow stile TS-27 request to exit station with push button, provides a convenient way to add authorized access control for a variety of applications. TS-27 is available with timer relay option for applications that require door to remain unlocked for a specified time.



TS-27G

Features

Standard Features

- Large 1-1/2" mushroom button
- Switch mounted on narrow stile wall plate with 302 stainless steel finish
- Plate screened "PUSH TO EXIT" for easy to follow egress instructions
- Momentary action switch

Options

- **TS-27B** with black mushroom push button
- **TS-27G** with green mushroom push button
- **TS-27R** with red mushroom push button
- **TS-27T** with timed output
 - Timer is adjustable 2 to 45 seconds
- Finishes: multiple plate finishes available
- Custom screening available

Specifications

Certifications & Listings

- UL 294 listed
- CSA Certified

Electrical

- One N/O and N/C contact, rated 10A at 35 VDC or 120 VAC
- Switch connection via screw terminals
- Switch depth behind plate: 2-1/2"

Operating Temperature

- -13F to +158 F (-25 to 70 C)

TS-36

Request to Exit Station



The TS-36 request to exit station, with push button, provides a convenient way to add authorized access control for a variety of applications. Momentary push button switch remains active as long as it's depressed.

Features

Standard Features

- Switch mounted on single gang wall plate with 430 stainless steel finish
- Large 1-1/2" red mushroom button
- Button engraved "EXIT" with white fill
- Momentary action switch
-

Options

- **TS-36302** mounted on weather resistant plate with 302 stainless steel finish

Specifications

Certifications & Listings

- UL 294 listed components

Electrical

- One N/O and N/C contact
- Contacts rated 10A at 35 VDC or 120 VAC

TS-40

Request to Exit Station with Electronic Timer

The TS-40 request to exit station with electronic timer and square push button, provides a convenient way to keep the door unlocked for a specified amount of time, allowing easy entry or egress. TS-40 meets the BOCA code for access controlled egress doors: the push button will release door if power timer fails.



TS-40

Features

Standard Features

- Switch mounted on single gang wall plate with 430 stainless steel finish
- 2" green square push button; illuminated with hi-brightness LED
- Button labeled "PUSH TO EXIT" for easy to follow egress instructions
- Time delay is adjustable 2 to 45 seconds
- Momentary SPDT action switch

Options

- **TS-40R** with red push button
- Finishes: multiple plate options available

Specifications

Certifications & Listings

- Meets BOCA code for access controlled egress doors

Electrical

- 12 VDC operation only
- SPDT contacts rated 10A at 35 VDC
- Timed contacts, rated 2A at 12 VDC
- Switch depth behind plate: 2-1/2"
- Switch terminated with 10" colored leads

Operating Temperature

- -13F to +158 F (-25 to 70 C)

TS-50

Request to Exit Station

The TS-50 request to exit station with push button, provides a convenient way to add authorized access control for a variety of applications. Extra large 2-1/2" mushroom push button offers a large target for easy entry or egress and is available in multiple colors.



TS-50

Features

Standard Features

- Switch mounted on double gang wall plate with 402 stainless steel finish
- Extra large 2-1/2" red mushroom button
- Plate labeled "PUSH TO EXIT" for easy to follow egress instructions
- Momentary action switch

Options

- **TS-50B** with black mushroom button
- **TS-50G** with green mushroom button
- Finishes: multiple plate finishes available
- Custom screening available

Specifications

Electrical

- One N/O and N/C contact, rated 10A at 35 VDC or 120 VAC
- Switch connection via screw terminals
- Switch depth behind plate: 2"

Operating Temperature

- -13F to +158 F (-25 to 70 C)

TS-14

Request to Exit Station with Pneumatic Timer

The TS-14 request to exit station with pneumatic timer and push button, provides a convenient way to keep the door unlocked for a specified amount of time, allowing for easy entry or egress. The door will relock when the relay time has expired.



TS-14

Features

Standard Features

- Switch mounted on single gang wall plate with 430 stainless steel finish
- 1-1/2" green mushroom push button
- Plate screened "PUSH TO EXIT" for easy to follow egress instructions
- Pneumatic time delay is adjustable 2 to 60 seconds
- Does not require external power for operation
- Timer life: up to 1 million operations

Options

- **TS-14R** with red mushroom push button
- **TS-14N** with switch mounted on narrow 1-3/4" wall plate with 302 stainless steel finish
- **TS-14NR** mounted on narrow wall plate with red push button
- **TS-14302** mounted on weather resistant plate with 302 stainless steel finish
- Finishes: multiple plate finishes available
- Custom screening available

Specifications

Certifications & Listings

- UL 294 listed

Electrical

- One N/O and one N/C contact pair
- Contacts rated 10A at 120 VDC
- Switch depth behind plate: 2-1/4"
- Switch time repeatable +/- 10%
- Switch terminated with 10" colored leads

Operating Temperature

- +15 to 120F (-9 to 49C)

TS-15, TS-16

Request to Exit Station with Pneumatic Timer

The narrow stile TS-15 and single gang TS-16 request to exit stations with pneumatic push button timer, provide a convenient way to keep the door unlocked for a specified amount of time, allowing easy entry or egress. The door will relock when the relay time has expired.



TS-15

TS-16

Features

Standard Features

- **TS-15** switch mounted on narrow 1-3/4" wall plate with 302 stainless steel finish
- **TS-16** switch mounted on single gang wall plate with 430 stainless steel finish
- 1/4" push button with guard ring
- Plate screened "PUSH TO EXIT" for easy to follow egress instructions
- Pneumatic time delay is adjustable 2 to 60 seconds
- Does not require external power for operation
- Timer life: up to 1 million operations

Options

- **TS-16302** mounted on weather resistant plate with 302 stainless steel finish
- Custom screening available

Specifications

Certifications & Listings

- UL 294 listed

Electrical

- Two sets of contacts, one N/O and one N/C, isolated
- Contacts rated 10A at 120 VDC
- Switch depth behind plate: 1-1/4"
- Switch time repeatable +/- 10%
- Switch terminated with 10" colored leads

Operating Temperature

- +15 to 120 F (-9 to 49C)

TS-21RPN

Request to Exit Station with Pneumatic Timer

The TS-21RPN request to exit station with pneumatic timer and push button, provides a convenient way to keep the door unlocked for a specified amount of time, allowing easy entry or egress. The door will relock when the relay time has expired. Extra large 2-1/2" button offers a large target for easy entry or egress and is available in multiple colors.



TS-21RPN

Features

Standard Features

- Switch mounted on single gang wall plate with 430 stainless steel finish
- 2-1/2" extra large red mushroom push button
- Plate screened "PUSH TO EXIT" for easy to follow egress instructions
- Pneumatic time delay is adjustable 2 to 60 seconds

Options

- **TS-21GPN** with extra large green mushroom push button
- Finishes: multiple plate finishes available
- Custom screening available

Specifications

Electrical

- One N/O and one N/C contact
- Contacts rated 10A at 120 VDC
- Switch time repeatable +/- 10%
- Switch terminated with 10" colored leads

Operating Temperature

- +15 to 120F (-9 to 49C)

TS-60

Request to Exit Station with Pneumatic Timer



The TS-60 request to exit station with pneumatic timer and push button, provides a convenient way to keep the door unlocked for a specified amount of time, the door will relock when the relay time has expired. Extra large 2-1/2" red mushroom push button offers a large target for easy entry or egress.

Features

Standard Features

- Switch mounted on single gang wall plate with 430 stainless steel finish
- 2-1/2" extra large red mushroom push button
- Button engraved "PUSH TO EXIT" in white for easy to follow egress instructions
- Pneumatic time delay is adjustable 2 to 60 seconds

Options

- Custom screening and finishes available

Specifications

Electrical

- One N/O contact and one N/C contact
- Contacts rated 10A at 120 VDC
- Switch depth behind plate: 1-1/4"
- Switch time repeatable +/- 10%

Operating Temperature

- +15 to 120F (-9 to 49C)

TS-10, TS-11

Vandal Resistant Request to Exit Station

The single gang TS-10 and narrow stile TS-11 request to exit stations, with vandal resistant push button and LED status indicators, provide an effective means of locking an exit door while still providing egress during an emergency. Red and green LEDs offer an at-a-glance visual indication of system status. Vandal resistant push buttons are designed for indoor, outdoor, commercial and industrial applications. Both models are available with timer relay for applications that require door to remain unlocked for a specified time.



TS-10



TS-11

Features

Standard Features

- **TS-10** switch mounted on single gang wall plate with 430 stainless steel finish
- **TS-11** switch mounted on narrow 1-3/4" wall plate with 302 stainless steel finish
- Vandal resistant 3/4" push button
- Plate is screened "PUSH TO EXIT" for easy to follow access instructions
- Red and green LED status indicators
- Momentary action switch

Options

- **TS-10T, TS-11T** with timer for timed access
- **TS-10302** with weatherproof plate to meet IP65 standards
- Custom screening available

Specifications

Certifications & Listings

- UL 294 listed
- CSA certified components
- IP65 *TS-10302 model only*

Electrical

- DPDT contacts rated 10A at 35 VDC
- Switch depth behind plate: 1-1/2"
- Switch terminated with 10" leads
- Red & green LEDs operate on 12 or 24 VDC

TS-12, TS-13

Vandal Resistant Request to Exit Station

The single gang TS-12 and narrow stile TS-13 request to exit stations, with vandal resistant push button, provide an effective means of locking an exit door while still providing egress during an emergency. Vandal resistant push buttons are designed for indoor, outdoor, commercial and industrial applications. Both models are available with timer relay for applications that require door to remain unlocked for a specified time.



TS-12

TS-13

Features

Standard Features

- **TS-12** switch mounted on single gang wall plate with 430 stainless steel finish
- **TS-13** switch mounted on narrow 1-3/4" wall plate with 302 stainless steel finish
- Vandal resistant 3/4" push button
- Plate is screened "PUSH TO EXIT" for easy to follow access instructions
- Momentary action switch

Options

- **TS-12T, TS-13T** with timer for timed access
- **TS-12302** with weatherproof plate to meet IP65 standards.
- Custom screening available

Specifications

Certifications & Listings

- UL 294 listed
- CSA certified components
- IP65 *TS-12302 model only*

Electrical

- DPDT contacts rated 10A at 35 VDC
- Switch depth behind plate: 1-1/2"
- Switch terminated with 10" leads

TS-23

Vandal Resistant Request to Exit Station



The TS-23 request to exit station, with vandal resistant push button, provides an effective means of locking an exit door while still providing egress during an emergency. Vandal resistant push buttons are designed for indoor, outdoor, commercial and industrial applications.

Features

Standard Features

- Switch mounted on single gang wall plate with 430 stainless steel finish
- Vandal resistant 3/4" push button
- Plate screened: "EXIT"
- Momentary action switch

Options

- Finishes: multiple plate finishes available
- Custom screening available

Specifications

Certifications & Listings

- UL 294 listed
- CSA approved components

Electrical

- DPDT contacts rated 10A at 35 VDC
- Switch depth behind plate: 1-1/2"
- Switch terminated with 10" leads

TS-17

Under Desk Door Release



The TS-17 is a key controlled under desk/ counter door release with momentary push button for remote control of doors and access controls. Ideal for front desk and reception or hard to wire areas that require discreet control of locking devices.

Features

Standard Features

- Black ABS plastic box with mounting ears
- Depressing push button operates switch contacts
- Supplied with two keys
- Surface mounted push button can be locked in either open or closed position using key

Options

- **KR-1KEY**
Replacement key

Specifications

Dimensions

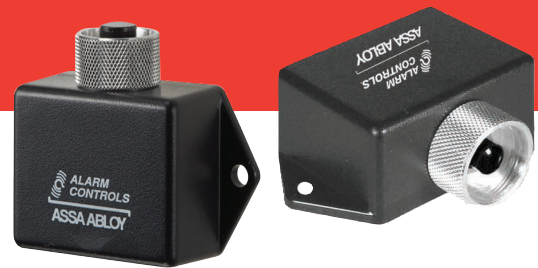
- Enclosure:
1-1/2"H x 3"W x 3"L

Electrical

- One N/O and one N/C contacts, rated 10A at 35 VDC or 120 VAC

TS-18, TS-19, TS-20

Under Desk Door Release



The TS-18, TS-19, and TS-20 are push button controlled under desk/counter door releases for remote control of doors and access controls. Ideal for front desk and reception or hard to wire areas that require discreet control of locking devices.

Features

Standard Features

- **TS-18** with momentary action switch
- **TS-19** with one N/O and one N/C momentary action switch, can be used with either provided switch
- **TS-20** with alternate action switch ; can be used with either provided switch
- Black ABS plastic box with two mounting ears
- Surface mounted push button protected with 1" guard ring
 - Depressing push button operates switch contacts

Options

- **TS-18D** with DPDT switch
- **TS-20D** with DPDT switch

Specifications

Certifications & Listings

- UL 636 listed
- CSA certified components

Electrical

- SPDT contacts rated 10A at 35 VDC
- **TS-18, TS-20** Switch terminated with 12" leads

DE-1

Delayed Exit Timer

The DE-1 provides an effective means of securing an exit door while still providing egress during an emergency. Alarm will sound with unauthorized door entry. Key switch reset is required to re-lock the door unless field wired for auto re-lock.



DE-1

Features

Standard Features

- Mounted on double gang stainless steel wall plate
- 2 second nuisance delay
- Key switch reset and re-lock
- Countdown buzzer and flashing lamp during timing mode
- 2" square green push button; illuminated with hi-brightness LED
- Plate screened: "ALARM WILL SOUND"
- Button labeled: "PUSH AND HOLD FOR EMERGENCY DOOR RELEASE"

Options

- **DE-1RED** with red push button

Specifications

Dimensions

- Enclosure: 1-1/2"H x 3"W x 3"L

Electrical

- One N/O and one N/C contacts
- Contacts rated 10A at 35 VDC or 120 VAC

TS-25, TS-26

Emergency Door Release

The single gang TS-25 and narrow stile TS-26 Emergency Door Release provide effective means of securing an exit door while still providing egress during an emergency.



TS-25



TS-26

Features

Standard Features

- **TS-25** switch mounted on single gang wall plate with 430 stainless steel finish
- **TS-26** switch mounted on narrow 1-3/4" wall plate with 302 stainless steel finish
- Plate screened "EMERGENCY DOOR RELEASE ALARM WILL SOUND"
- Switch illuminated with hi-brightness LED; button illuminated when in alarm state
- 85 dB Piezo buzzer
- Alternating DPDT action switch

Options

- Finishes: multiple plate finishes available

Specifications

Electrical

- 12 or 24 VAC/VDC
- Contacts rated 3A at 35 VDC or 120 VAC
- Switch terminated with colored leads

GBS-1

Glass Break Emergency Door Release

The GBS-1 provides immediate unlocking of perimeter and interior doors providing egress during an emergency.



Features

Standard Features

- ABS 757 plastic construction
- **GBS-1GLASS** Replacement glass available

Specifications

Certifications & Listings

- UL 294 listed
- CUL approved components

Dimensions

- 3-1/2"H x 3-1/2"W x 2-1/2"D

Electrical

- SPDT switch rated
10A at 24 VDC

NTS

No Touch Request to Exit Station

The NTS No Touch Request to Exit Station uses wireless sensors to reliably allow safe egress or to activate a device with the simple wave of a hand. Designed to reduce the risk of contamination for sensitive applications including: bathrooms, hospitals, labs, schools and offices.



NTS-1



NTS-2



NTS-3

Features

Standard Features

- Stainless steel with vandal resistant face plate
- Sensor detection range up to 4"
- Bi-color Halo LED status indicators
- Plate screened "Wave To Open".
- Time delay settable for 1 to 35 seconds

Options

- **NTS-1** with single gang wall plate
- **NTS-2** with double gang wall plate
- **NTS-3** with narrow stile wall plate

Specifications

Electrical

- SPDT relay rated 2A at 30 VDC/VAC
- Operates on 12 VDC or 24 VDC

Operating Temperature

- -13 to + 131 F (-25 to 55 C)

EXP

Explosion Resistant Request to Exit Stations

Explosion Resistant Request to Exit Stations specifically designed for hazardous environments where flammable vapors and gases (Class I) and combustible dust (Class II) may be present or handled.



EXP-1/EXP-2

EXP-15/EXP-25

Features

Standard Features

- Heavy cast NEMA type 7 enclosure
- 2" diameter push button silkscreened with black epoxy ink

Options

- **EXP-1** momentary action switch, button labeled "PUSH TO EXIT"
- **EXP-2** latching action switch, button labeled "PUSH TO EXIT"
- **EXP-15** Momentary action switch, button labeled "PANIC"
- **EXP-25** Latching action switch, button labeled "PANIC"
- Custom screening available

Specifications

Certifications & Listings

- Conforms to Class I, Division I and II, Group B, C, D, E, F, G
- UL and ULC approved for hazardous locations

Dimensions

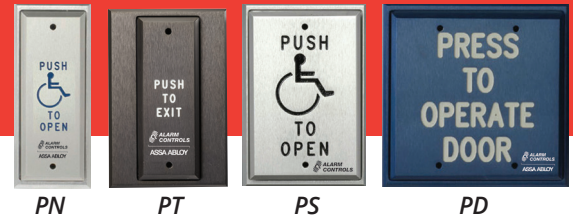
- 6-1/2"H x 4"W x 4-1/2"D

Electrical

- Contacts rated 5A at 35 VDC or 120 VAC
- One N/O and N/C contact
- Pipe thread 1/2-14 NPT

PN, PT, PS, PD Series

Vandal Resistant Push Plates



Vandal resistant push plates with hardwired switches are designed for automatic door activation and request to exit applications. Push plates are available in narrow, T-style, single and double gang options.

Features

Standard Features

- **PN** 1-7/8" narrow stile plate is suitable for mullion mounting
- **PT/PS** T-Style and Single Gang plates mount on standard single gang electrical box
- **PD** Mounts on standard double gang electrical box
- Machined from solid aluminum with engraved text and anodized finish
- Tamper resistant mounting
- Vandal resistant; Designed for use in high traffic areas

Options

- Finish: multiple plate finish options available
- Switch type, choose: SPDT, DPDT, Pneumatic
- Plate engraving, available with: "Push to Exit", "Push to Operate", "Push to Open", ADA Symbol, "Emergency Door Release"
- Engraving Fill: multiple options available

Specifications

Certifications & Listings

- UL 294 (6th edition) listed
- NFPA-101

Dimensions

- **PN:**
 - Plate: 4-1/2"H x 1-7/8"W
 - Button: 4"H x 1-1/2"W
- **PT:**
 - Plate: 4-1/2"H x 3"W
 - Button: 4"H x 1-1/2"W
- **PS:**
 - Plate: 4-1/2"H x 3"W
 - Button: 4"H x 2-5/8"W
- **PD:**
 - Plate: 4-1/2"H x 4-1/2"W
 - Button: 4"H x 4-1/8"W

Electrical

- SPDT/DPDT Switch Specifications:
 - Contact Rating: 4A @ 12 VDC
 - Switch depth behind plate: 1.375"
 - Switches terminated in 22AWG colored leads:
 - Common – White
 - Normally Closed – Red
 - Normally Open – Blue
- Pneumatic Switch Specifications:
 - Contact Rating: 2A @ 28VDC
 - Switch depth behind plate: 1.50"
 - Switches terminated in 22AWG colored leads:
 - Normally-Closed Pair- Red
 - Normally-Open Pair- Blue

How To Order

| PLATE | SWITCH TYPE | FINISH | ENGRAVING* | PUSH PLATES - PN, PT, PS, PD |
|-------------------------|---|-------------------|------------------------------------|------------------------------|
| PS | 1 | 1 | 1 | 1 |
| PN - Narrow | 1 - SPDT Momentary Action | 1 - Clear | 1 - Push to Exit | 1 - Black |
| PT - T-Style | 2 - DPDT Momentary Action | 2 - Bronze | 2 - Push to Operate | 2 - Red |
| PS - Single Gang | 5 - Pneumatic Time Delay (2 to 60 seconds) | 3 - Brass | 4 - ADA Symbol Push to Open | 3 - White |
| PD - Double Gang | | 4 - Blue | 5 - Emergency Door Release | 4 - Blue |
| | | 5 - Black | | |
| | | 6 - Red | | |

* Push to Open, Emergency Door Release engraving options not available on PD Double Gang Plates.

JP Series

Jumbo Push Plates



Jumbo push plates with hardwired switches are designed for automatic door activation and request to exit applications.

Features

Standard Features

- Machined from steel with screened text
- Designed for use in high traffic areas
- 5-1/2" square steel push plate
- Mounts on a standard double gang electrical box
- Pneumatic time delay 2 to 60 seconds

Options

- Switch type, choose: SPDT, DPDT, Pneumatic
- Plate screened: available with: "Press to Exit", "Press to Open", or "Press to Operate"
- Plate finish: 302 Satin Stainless Steel or Blue wall plate

Specifications

Plate Dimension

- 5-1/2"H x 5-1/2"W

Electrical

- SPDT/DPDT:
 - Contact Rating: 5A at 125 VDC
 - Switch depth behind plate: 1-1/2"
- Pneumatic:
 - One N/O and One N/C contact, rated 2A at 12-28 VDC
 - Switch depth behind plate: 2-1/4"
 - Switch time is repeatable +/- 10%
 - Time delay operator does not require power for timing function

Operating Temperature

- Non-pneumatic: -20F to +150F
- Pneumatic: -15F to +120F

| JUMBO MODEL | SCREENING | PLATE FINISH | MOMENTARY SPDT | MOMENTARY DPDT | PNEUMATIC TIMER |
|-------------|--|---------------------|----------------|----------------|-----------------|
| JP | 1 "Press to Exit" in blue | 302 Stainless Steel | JP1-1 | JP1-2 | JP1-5 |
| JP | 2 "Press to Open" with ADA symbol in white | Blue | JP2-1 | JP2-2 | JP2-5 |
| JP | 3 "Press to Operate" in blue | 302 Stainless Steel | JP3-1 | JP3-2 | JP3-5 |

SREX-100

Motion Sensor



Active focused infrared motion sensor is specifically designed for request to exit applications. SREX-100 has an adjustable narrow activation zone and cannot be deceived by objects placed under the door.

Features

Standard Features

- Narrow activation zone is limited to door handle area (range 28" to 48")
- Designed to eliminate cross-traffic activation
- Cannot be deceived by placing objects under door
- Immune to thermal changes
- Adjustable time delay from 1 to 60 seconds
- Built-in buzzer, can be silenced if required
- Request to exit, keypad or card reader, and door position switch input
- 3 year warranty

Options

- **CP1-MREX** for hazardous locations

Specifications

Certifications & Listings

- UL 294 listed
- CAN/ULC-S319 listed as an access control device

Electrical

- Operates on 12 or 24 VAC or VDC; current draw 155 mA, auto sensing
- DPDT relay with 2A contacts; rated at 1.3A at 30 VDC or 24 VAC
- 14 pin connector with 4 ft of cable

Operating Temperature

- +32F to +120 F (0 to 49C)

REB-1A

Request to Exit Push Bar



REB-1A provides mechanical activation for electronic release in a reliable, durable exit bar. Designed for use on electronically locked, non-fire-rated doors or as an initiate device for a delayed egress timer. Pressing the bar activates internal mechanical switches to release the lock.

Features

Standard Features

- Low profile design requires only 1/4" movement for activation
- Mechanical action activates DPDT relay
- 5A rated output to allow free egress or initiate an exit delay timer
- Redundant switches ensure reliable, fault-tolerant operation
- All metal construction
- Includes 16ft 22 AWG 6 conductor cable and armored door cord
- Indoor operation

Options

- Contact the factory for cover plates for retrofit applications. Covers unwanted holes, strengthen mounting area and provides clean aesthetic.
- **REB-1ADURO** with Duranodic (US 40) finish

Specifications

Dimensions

- Length: 36"
- Custom lengths available, please contact factory

Electrical

- Max current 1.5A at 30 VDC

Operating Temperature

- -4° to +185° F (-20 to +85°C)

Switch Information Guide

Single Pole – Single Throw (SPST)

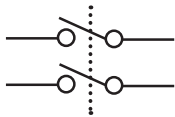
Switches that have one input and one output (NO or NC) and turn on or off in response to the switch action

Single Pole – Double Throw (SPDT)

Switches with one input and two outputs. When the switch operation occurs, the connection shifts from output A to output B

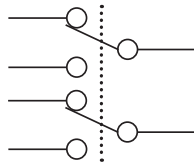
Double Pole – Single Throw (DPST)

Two SPST switches that operate in tandem using one switch operation so that two outputs turn on or off simultaneously in reaction to the switch operation



Double Pole – Double Throw (DPDT)

Two SPDT switches that operate in tandem using one switch operation so that each connection shifts simultaneously from its primary output to its secondary output



Momentary Switch

A momentary switch changes state during activation and reverts to its original state upon deactivation. A doorbell is a common example of a momentary switch. A timer can be used to extend the effect of the switch operation for a specific amount of time.

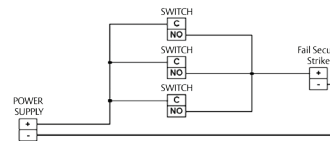
Alternate Switch

An alternate switch changes state upon activation and does not change back until reactivated. A light switch is a common example of an alternate switch. Alternate switches are also called maintained or latching switches

Normally Open Contacts (NO)

A normally open contact provides an open circuit where no current is flowing in its usual state.

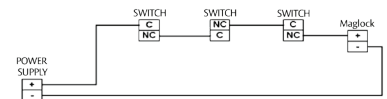
Wired in parallel for fail secure type electric locks (i.e. electric strike). Activating any switch will apply power, releasing the lock.



Normally Closed Contacts (NC)

A normally closed contact provides a closed circuit where current is flowing in its usual state.

Wired in Series for fail safe type electric locks (i.e. Securitron Maglocks). Activating any switch will break power, releasing the lock.



RemotePlates



MP-20, MP-21

Mini Remote Keyswitch Plates



MP-20

MP-21

Miniature sized remote key switch plates for single or double “D” holes. Provides an enhanced installation appearance for commercial and industrial applications.

Features

Standard Features

- **MP-20** 3/4" “D” hole for Key Switch/Ace lock
- **MP-21** 3/4" Double “D” hole for Medeco lock
- Miniature polished chrome plated brass plates
- Mounting screws included
- Easy to clean, smooth finish

Options

- Contact factory for customized options

Specifications

Dimensions

- 1-1/4"W x 2-1/4"L

MP-26

Mini Remote Wall Plates



MP-26

MP-26A

Miniature sized remote wall plate with red N/O push button and guard ring. Option for black N/C push button.

Features

Standard Features

- Miniature polished chrome plated brass plates
- 1/4" N/O red push button with guard ring
- Mounting screws included
- Guard ring

Options

- **MP-26A** for N/C black push button
- **K-05** Replacement N/C push button
- **K-13** Replacement N/O push button

Specifications

Dimensions

- 1-1/4"W x 2-1/4"L

Electrical

- N/O contacts rated .75A at 125 VDC

MP-28, MP-29, MP-30, MP-31

Mini Remote Wall Plates



MP-28

MP-29

MP-30

MP-31

Miniature sized remote wall plate with red, green, bi-colored, or blue LED.

Features

Standard Features

- **MP-28** with 1/4" red LED
- **MP-29** with 1/4" green LED
- **MP-30** with 1/4" bi-colored LED
- **MP-31** with 1/4" blue LED
- Miniature polished chrome plated brass plates
- Mounting screws included

Options

- Add **L** for 1/2" LED (except on MP-30 - no 1/2" bi-color)

Specifications

Dimensions

- 1-1/4"W x 2-1/4"L

Electrical

- Operates on 12 or 24 VDC
- LED current draw 8mA at 12 VDC, 12mA at 24 VDC
- LEDs include flying leads

MP-44

Mini Remote Wall Plate



Miniature sized remote wall plate with indicating push button.

Features

Standard Features

- Miniature polished chrome plated brass plates
- 2/5" push button changes from black to orange when depressed
- Mounting screws included
- Ideal for zone shunting

Options

- **MP-44MOMENTARY** with momentary action indicating button
- **FA-200** Replacement push button

Specifications

Dimensions

- 1-1/4"W x 2-1/4"L

Electrical

- DPDT alternate action indicating button
- Rated 2A at 28 VDC

RP-01

Remote Key Switch Plates

Narrow remote key switch plate with options available for single "D" hole, red LED status indicator and N/C tamper switch.

See Options for hole size and LED selections.



RP-01

Features

Standard Features

- Narrow 1-1/2" front plate with stainless steel finish
- Aluminum back plate with 3/4" "D" hole for Ace lock
- 1/4" red LED status indicator

Options

- **RP-01M** 3/4" Double "D" hole for Medeco lock, N/C tamper switch
- **RP-01A** N/O tamper switch
- **RP-01MA** 3/4" Double "D" hole for Medeco lock, N/O tamper switch
- **RP-01SG** with single gang plate
- **KA-105, KA-108** Key switch for RP-01
- **KA-109, KA-110** Key switch for M version
- Custom screening available
- **426** back box

Specifications

Dimensions

- 1-1/2"W x 4-1/2"H

Electrical

- N/C tamper switch
- LEDs current draw: 8mA at 12 VDC, 12mA at 24 VDC
- 6" red and black leads

RP-02

Remote Key Switch Plate

Narrow remote ivory key switch plate with white push button and LED status indicator.



Features

Standard Features

- Narrow 1-1/2" front plate with ivory finish
- White flush push button
- Aluminum back plate
- 1/4" red LED status indicator

Options

- **RP-02SS** Front plate in stainless steel finish available
- **426** back box
- **450** Replacement button
- Custom screening available

Specifications

Dimensions

- 1-1/2"W x 4-1/2"H

Electrical

- N/O push button
- LED current draw 8mA at 12 VDC, 12mA at 24 VDC
- 6" red and black leads

RP-03

Remote Key Switch Plate

Narrow remote key switch plate for single "D" hole. Includes red and green LED status indicators and N/C tamper switch. See Options for hole size and selections.



RP-03

Features

Standard Features

- Narrow 1-1/2" front plate with stainless steel finish
- Aluminum back plate with 3/4" "D" hole for Ace lock
- 1/4" red and green LED

Options

- **RP-03M** 3/4" Double "D" hole for Medeco lock, N/C tamper switch
- **RP-03A** N/O tamper switch
- **RP-03MA** 3/4" Double "D" hole for Medeco lock, N/O tamper switch
- **KA-105, KA-108** Key switch for use with RP-03
- **KA-109, KA-110** Key switch for M version
- **RP-03SG** single gang
- **426** back box
- Custom screening available

Specifications

Dimensions

- 1-1/2"W x 4-1/2"

Electrical

- N/C tamper switch
- LED current draw: 8mA at 12 VDC, 12mA at 24 VDC
- 6" red and black lead

RP-04

Remote Wall Plate

Single gang remote wall plate with "D" hole for Ace lock. Includes red and green LED status indicators.



RP-04

Features

Standard Features

- Single gang wall plate with stainless steel finish
- 3/4" "D" hole for Ace lock
- 1/4" red and green LEDs

Options

- **RP-04L** for 1/2" LED
- **KA-105, KA-108** Key switch for use with RP-04
- Finishes: multiple plate finishes available

Specifications

Dimensions

- 2-3/4"W x 4 1/2"

Electrical

- N/C tamper switch
- LED current draw: 8mA at 12 VDC, 12mA at 24 VDC
- LEDs have flying leads

RP-05

Remote Wall Plate



RP-05

Single gang remote wall plate with white push button and red and green LED status indicators.

Features

Standard Features

- Single gang wall plate with stainless steel finish
- White flush push button
- 1/4" red and green LEDs

Options

- **RP-05SLIM** with slim plate
- **450** replacement push button
- Finishes: multiple plate finishes available

Specifications

Dimensions

- 2-3/4"W x 4 1/2"H

Electrical

- N/O push button rated .5A
- LED current draw 8mA at 12 VDC, 12mA at 24 VDC
- 6" red and black leads

RP-06

Remote Wall Plate



Single gang remote wall plate with double "D" hole for Medeco lock and red and green LED status indicators.

Features

Standard Features

- Single gang wall plate with stainless steel finish
- Double "D" hole for Medeco lock
- 1/4" red and green LEDs

Options

- **KA-109, KA-110** Key switch for use with RP-06
- Finishes: multiple plate finishes available

Specifications

Dimensions

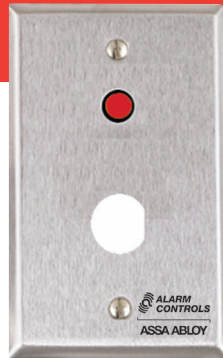
- 2-3/4"W x 4 1/2"H

Electrical

- LED current draw 8mA at 12 VDC, 12mA at 24 VDC
- 6" red and black leads

RP-07

Remote Wall Plate



Single gang remote wall plate with "D" hole for Ace lock and red LED status indicator.

Features

Standard Features

- Single gang wall plate with stainless steel finish
- 3/4" "D" hole for Ace lock
- 1/4" red LED

Options

- **KA-105, KA-108** Key switch for use with RP-07
- Finishes: multiple plate finishes available

Specifications

Dimensions

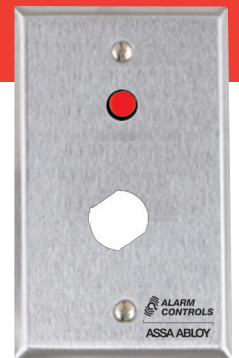
- 2-3/4"W x 4 1/2"H

Electrical

- LED current draw 8mA at 12 VDC, 12mA at 24 VDC
- 6" red and black leads

RP-08

Remote Wall Plate



Single gang remote wall plate with double "D" hole for Medeco lock and red LED status indicator.

Features

Standard Features

- Single gang wall plate with stainless steel finish
- Double "D" hole for Medeco lock
- 1/4" red LED

Options

- **KA-109, KA-110** Key switch for use with RP-08
- Finishes: multiple plate finishes available

Specifications

Dimensions

- 2-3/4"W x 4 1/2"H

Electrical

- LED current draw 8mA at 12 VDC, 12mA at 24 VDC
- 6" red and black leads

RP-09

Remote Wall Plate



RP-09

RP-09L

Single gang remote wall plate with LED status indicators. See Options for plate size and LED selections.

Features

Standard Features

- 1/4" red and green LEDs, mounted horizontally
- Single gang wall plate with stainless steel finish

Options

- **RP-09L** with 1/2" red and green LEDs, mounted vertically
- **RP-09SLIMLINE** with 1/4" red and green LEDs on narrow stile wall plate
- **RP-09LSLIMLINE** with 1/2" LEDs on narrow plate
- Finishes: multiple plate finishes available

Specifications

Dimensions

- **RP-09, RP-09L:** 2-3/4"W x 4-1/2"H
- **RP-09SL:** 1-1/2"W x 4-1/2"H

Electrical

- 1/4" LED current draw 8mA at 12 VDC, 12mA at 24 VDC
- 1/2" LED current draw 9mA at 12 VDC, 19mA at 24 VDC
- LEDs include flying leads

RP-20

Remote Wall Plate



Single gang remote wall plate with "D" hole for Ace lock

Features

Standard Features

- Single gang wall plate with stainless steel finish
- 3/4" "D" hole for Ace lock

Options

- **KA-105, KA-108** Key switch for use with RP-20
- Finishes: multiple plate finishes available
- Custom screening available

Specifications

Dimensions

- 2-3/4"W x 4-1/2"H

RP-21

Remote Wall Plate

Single gang remote wall plate with double "D" hole for Medeco lock



Features

Standard Features

- Single gang wall plate with stainless steel finish
- Double "D" hole for Medeco lock

Options

- **KA-109, KA-110** Key switch for use with RP-21
- Finishes: multiple plate finishes available
- Custom screening available

Specifications

Dimensions

- 2-3/4"W x 4-1/2"H

RP-22

Remote Wall Plate

Single gang remote wall plate with 1-1/8" hole for Sonalert audible indicators.



Features

Standard Features

- Single gang wall plate with satin stainless steel finish
- 1-1/8" hole for SC628 Sonalert audible indicators, or equivalent

Options

- **SC628** sounder
- Finishes: multiple plate finishes available
- Custom screening available

Specifications

Dimensions

- 2-3/4"W x 4-1/2"H

RP-23

Remote Wall Plate

Single gang remote wall plate with hole for Piezo sounders and buzzers. See Options for size selections.

Features

Standard Features

- 3/4" hole for PA-100 or PA-300 Piezo sounders
- Single gang wall plate with satin stainless steel finish

Options

- **RP-23A** with 5/8" hole for LA32 Buzzer
- **RP-23ASLIMLINE** with narrow plate
- Finishes: multiple plate finishes available
- Custom screening available

Specifications

Dimensions

- 2-3/4"W x 4-1/2"H



RP-23

RP-24, RP-25

Remote Key Switch Plates

Narrow remote key switch plate.

Features

Standard Features

- **RP-24** back plate has "D" hole for Ace lock
- **RP-25** back plate has double "D" hole for Medeco lock
- Narrow 1-1/2" plate with stainless steel finish
- Aluminum back plate with N/O tamper switch

Options

- **RP-24SG** with single gang stainless steel plate
- **KA-105, KA-108** Key switch for use with RP-24
- **KA-109, KA-110** Key switch for use with RP-25
- **426** back box
- Finishes: multiple plate finishes available
- Custom screening available

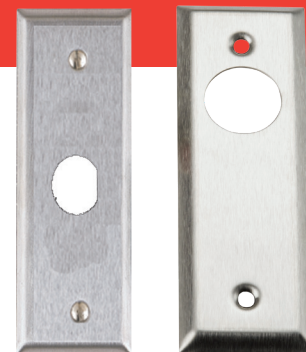
Specifications

Dimensions

- 1-1/2"W x 4-1/2"

Electrical

- N/O tamper switch
- Contacts rated .75A at 125 VDC



RP-24

RP-25

RP-26

Remote Wall Plate

Remote wall plate with red N/O push button and guard ring. See Options for size and push button selections.



RP-26

Features

Standard Features

- **RP-26** N/O red push button with guard ring
- Switch mounted on wall plate with stainless steel finish

Options

- **RP-26A** single gang wall plate with N/C black push button with guard ring
- **RP-26SLIM** narrow slim-line wall plate with N/O red push button with guard ring
- **RP-26ASLIM** narrow slim-line wall plate with N/C black push button with guard ring
- **KA-05, KA-13** replacement buttons
- Finishes: multiple plate finishes available
- Custom screening available

Specifications

Dimensions

- 2-3/4"W x 4-1/2"H

RP-27

Remote Wall Plate

Single gang remote wall plate with two N/O red push buttons. See Options for size and push button selections.



RP-27

Features

Standard Features

- **RP-27** with two N/O red push buttons, each with guard ring
- Switch mounted on wall plate with stainless steel finish

Options

- **RP-27A** single gang wall plate with two N/C black push buttons, each with guard ring
- **RP-27SLIM** narrow plate with two N/C red push buttons, each with guard ring
- **RP-27ASLIM** narrow plate with black push buttons
- **KA-05, KA-13** replacement buttons
- Finishes: multiple plate finishes available

Specifications

Dimensions

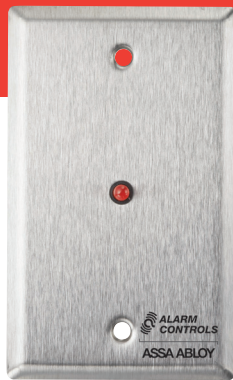
- 2-3/4"W x 4-1/2"H

Electrical

- Momentary contacts rated .75A at 125 VDC
- N/O or N/C push buttons

RP-28

Remote Wall Plate



RP-28

Remote wall plate with red LED. See Options for plate size and LED selections.

Features

Standard Features

- **RP-28** 1/4" red LED
- Switch mounted on single gang wall plate with stainless steel finish

Options

- **RP-28L** with 1/2" red LED
- **RP-28BI** with 1/4" bi-colored LED
- **RP-28FLASHING** 1/4" flashing LED
- **RP-28SL** narrow plate
- **RP-28302** with waterproof 302 plate
- **RP-28L302** with waterproof 302 plate and 1/2" LEDs
- Finishes: multiple plate finishes available

Specifications

Dimensions

- 2-3/4"W x 4-1/2"H

Electrical

- 1/4" LED operates on 12 or 24 VDC, current draw 8mA at 12 VDC, 12mA at 24VDC
- 1/2" LED operates on 12 or 24 VDC, current draw 9mA at 12 VDC, 19mA at 24VDC
- LEDs have flying leads

RP-29

Remote Wall Plate



RP-29

Single gang remote wall plate with green LED. See Options for plate size and LED selections.

Features

Standard Features

- **RP-29** 1/4" green LED
- Switch mounted on single gang wall plate with stainless steel finish

Options

- **RP-29L** with 1/2" green LED
- **RP-29SLIMLINE** narrow plate
- **RP-29L302** 1/2" LEDs and weatherproof 302 plate
- **RP-29LSLIMLINE** 1/2" LED and narrow plate
- Finishes: multiple finishes available

Specifications

Dimensions

- 2-3/4"W x 4-1/2"H

Electrical

- 1/4" LED operates on 12 or 24 VDC, current draw 8mA at 12 VDC, 12mA at 24VDC
- 1/2" LED operates on 12 or 24 VDC, current draw 9mA at 12 VDC, 19mA at 24VDC
- LEDs have flying leads

RP-30

Remote Wall Plate

Single gang remote wall plate with red LED. Includes hole for switch mounting.



RP-30

RP-30L

Features

Standard Features

- **RP-30** 1/4" red LED
- Single gang wall plate with stainless steel finish
- 1/2" hole for switch mounting

Options

- **RP-30L** with 1/2" red LED
- Finishes: multiple plate finishes available

Specifications

Dimensions

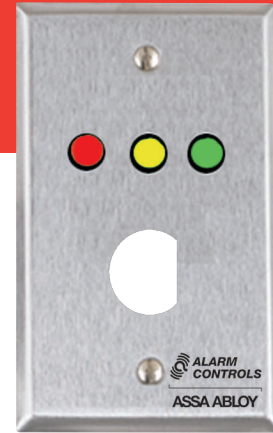
- 2-3/4"W x 4-1/2"H

Electrical

- 1/4" LED operates on 12 or 24 VDC, current draw 8mA at 12 VDC, 12mA at 24VDC
- 1/2" LED operates on 12 or 24 VDC, current draw 9mA at 12 VDC, 19mA at 24VDC
- LEDs have flying leads

RP-33

Remote Wall Plate



Single gang remote wall plate with multiple LED indicators and “D” hole for Ace lock. RP-33 is designed to function as an arming station for a simple burglar alarm panel. With added key switch, sold separately, the LEDs indicate if the panel is armed (red), if the opening is closed/secured (green), and if the alarm has been triggered (yellow).

Features

Standard Features

- Single gang wall plate with stainless steel finish
- 1/4” red, yellow, and green LEDs; hi-brightness illumination
- 3/4” “D” hole for Ace lock

Options

- **RP-33SLIM** narrow plate
- **KA-105, KA-108** Key switch for use with RP-33
- Finishes: multiple plate finishes available
- Custom screening available

Specifications

Dimensions

- 2-3/4”W x 4-1/2”H

Electrical

- LED operates on 12 or 24 VDC, current draw 8mA at 12 VDC, 12mA at 24VDC
- 6” red and black leads

RP-35

Remote Wall Plate



Single gang remote wall plate with multiple LED indicators and white arming push button. Designed to function as an arming station for a simple burglar alarm panel. LEDs indicate if the panel is armed (red), if the opening is closed/secured (green), and if the alarm has been triggered (yellow).

Features

Standard Features

- Single gang wall plate with stainless steel finish
- 1/4" red, yellow, and green LEDs; hi-brightness illumination
- N/O flush white push button

Options

- **450** replacement push button
- Finishes: multiple plate finishes available

Specifications

Dimensions

- 2-3/4"W x 4-1/2"H

Electrical

- LED operates on 12 or 24 VDC, current draw 8mA at 12 VDC, 12mA at 24VDC
- N/O push button, rated .5A
- 6" red and black leads

RP-44, RP-45, RP-46, RP-47, RP-48

Remote Wall Plates



RP-44

RP-45

RP-46

RP-47

RP-48

RP-46P/F/M3C

Remote wall plates with single or multiple indicating push buttons that change from black to orange when depressed. Ideal for applications where zone shunting is required. See Options for size and label selections.

Features

Standard Features

- **RP-44** single switch
- **RP-45** two switches
- **RP-46** three switches
- **RP-47** four switches
- **RP-48** six switches
- Switch(es) mounted on single gang wall plate with stainless steel finish
- Alternate action push buttons change from black to orange when depressed
- Ideal for zone shunting
- Can be converted to momentary operation

Options

- **RP-44SLIM, RP-45SLIMLINE** switch mounted on narrow 1-1/2" wall plate (RP-44 and RP-45 models only)
- **RP-46P/F/M** with Police, Fire, Medical Station labels in black (RP-46 model only)
- **RP-46P/F/M3C** with Police, Fire, Medical Station colored labels (RP-46 model only)
- **FA-200** Replacement button
- Finishes: multiple plate finishes available
- Custom screening available

Specifications

Dimensions

- Varies by plate size

Electrical

- DPDT indicating shunt switches, each contact rated at 2A

RP-49

Remote Wall Plate

Single gang remote key switch plate with indicating push button and "D" hole for Ace lock.



RP-49

Features

Standard Features

- Single gang wall plate with stainless steel finish
- Red indicating push button
- 3/4" "D" hole for Ace lock

Options

- **RP-49MOM** with momentary switch
- **KA-105, KA-108** Key switch for use with RP-49
- Finishes: multiple plate finishes available
- Custom screening available

Specifications

Dimensions

- 2-3/4"W x 4-1/2"H

Electrical

- DPDT contact rated 2A at 28 VDC

RP-50

Remote Wall Plate

Single gang remote key switch plate with 3/4" "D" hole for lock on backplate and red and green status indicators.



RP-50

Features

Standard Features

- Single gang wall plate with stainless steel finish
- 1/4" red and green LEDs; hi-brightness illumination
- 3/4" "D" hole on back plate for Ace lock

Options

- **RP-50M** with double "D" hole for Medeco lock
- **KA-105, KA-108** Key switch for use with RP-50
- **KA-109, KA-110** Key switch for M version
- Finishes: multiple plate finishes available

Specifications

Dimensions

- 2-3/4"W x 4-1/2"H

Electrical

- LEDs operate on 12 or 24 VDC, current draw 8mA at 12 VDC, 12mA at 24VDC
- N/C tamper switch, contacts rated .75A at 125 VDC
- 6" red and black leads

RP-100

Remote Wall Plate

Single gang remote wall plate with white push button.



RP-100

Features

Standard Features

- Single gang wall plate with stainless steel finish
- White flush push button

Options

- **RP-100302** with weatherproof 302 stainless steel plate
- **RP-100SLIM** narrow plate
- Finishes: multiple plate finishes available
- Custom screening available

Specifications

Dimensions

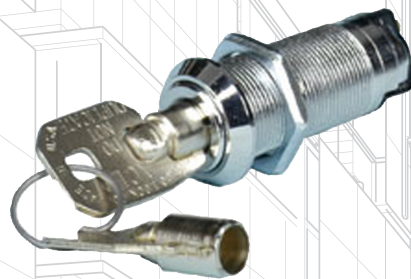
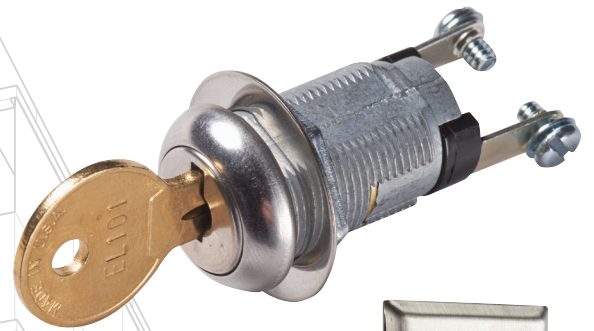
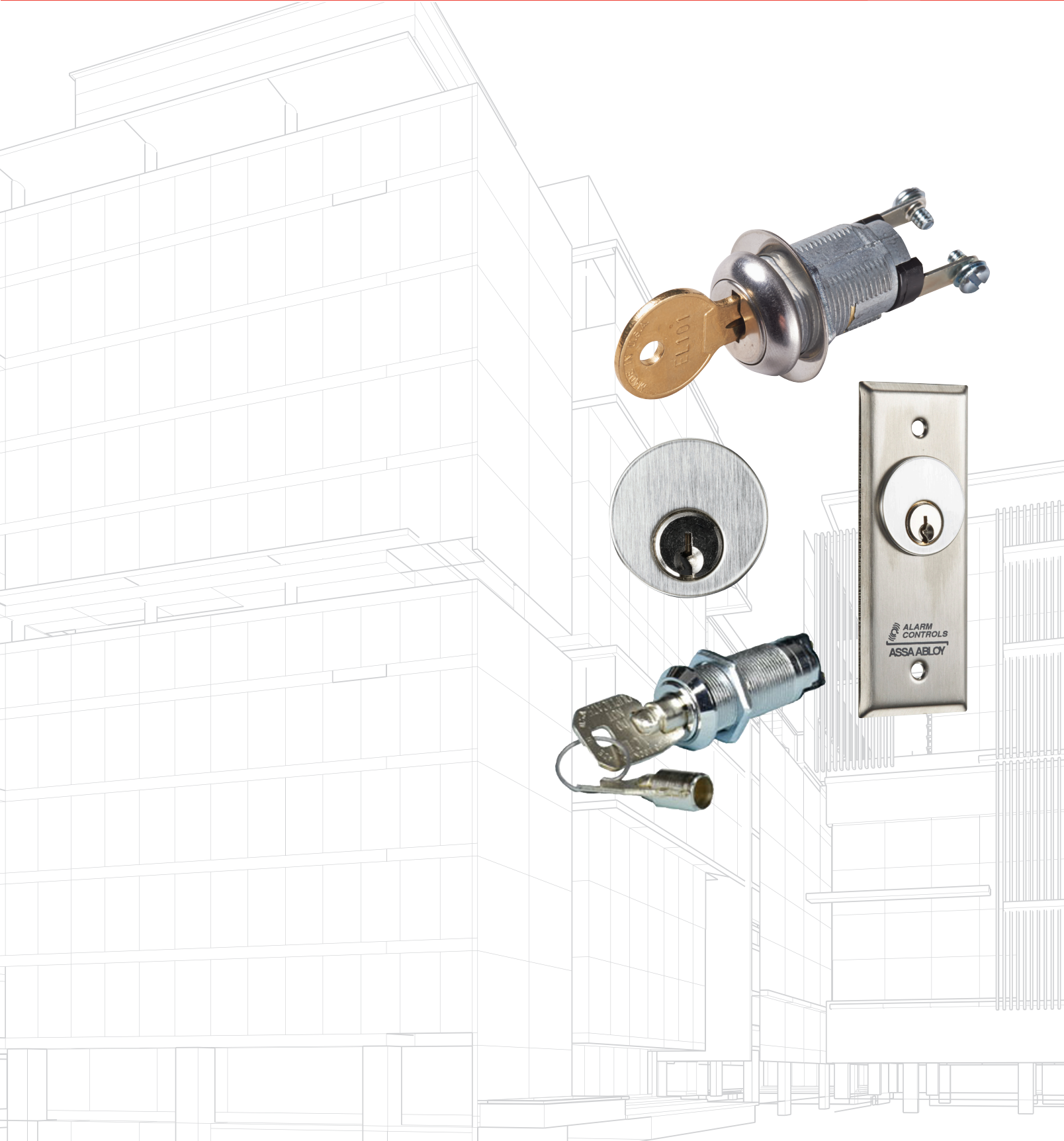
- 2-3/4"W x 4-1/2"H

Electrical

- N/O push button, rated .5A at 35 VDC

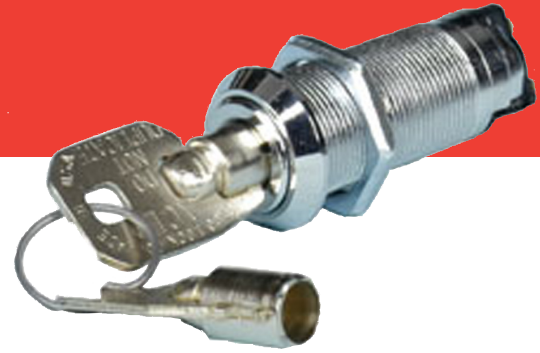
See SystemAccessories for replacement components, buttons, and LEDs.

KeySwitches



KA Series

Ace Terminal Key Switches



KA-105

Ace round on-off key switch lock supplied with two keys. Key is removable in ON or OFF position, depending on model.

Features

Standard Features

- Ace round switch key
- Supplied with two keys

Options

- Key removable in multiple positions depending on model, see chart below
- Add **A** for keyed alike

Specifications

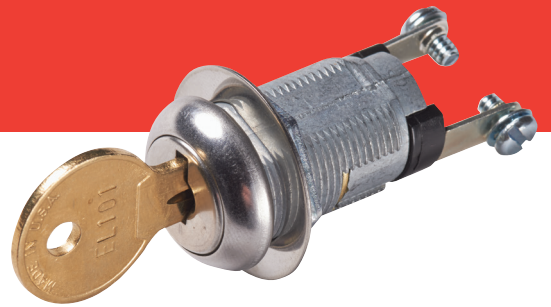
Electrical

- Contact rated 7A (restive) at 28 VDC or 7A at 125 VAC
- Screw terminals

| Model | Description |
|-------------|---|
| KA-105 | ON/OFF switch key removable in ON position, keyed different |
| KA-105A | Same as KA-105 except keyed alike |
| KA-106 | ON/OFF switch key removable OFF position, keyed different |
| KA-106A | Same as KA-106 except keyed alike |
| KA-107 | Momentary switch key removable in OFF position, keyed different |
| KA-107A | Same as KA-107 except keyed alike |
| KA-107ANC | Same as KA-107A except key removable in ON position |
| KA-108 | ON/OFF switch key removable both positions, keyed different |
| KA-108A | Same as KA-108 except keyed alike |
| PL927/PL910 | Replacement keys for A versions |

KA Series

Flat Key Switches



KA-109A

Single or double bitted flat on-off key switch lock supplied with key. Key is removable in ON or OFF position, depending on model.

Features

Standard Features

- Bitted flat switch key
- Supplied with two keys

Options

- Key removable in multiple positions depending on model, see chart below
- Available in single or double bitted key, see model chart
- Add **A** for keyed alike

Specifications

Electrical

- Contact rated 2A at 46 VDC or 2.5A at 120 VAC
- Screw terminals (except KA-111 and KA-111A which have 8" color coded wire leads)

| Model | Description |
|---------|--|
| KA-109 | Single bitted flat key, ON/OFF keyswitch, key removable in ON or OFF position, keyed different |
| KA-109A | Same as KA-109 except keyed alike |
| KA-110 | Single bitted flat key, momentary switch, key removable in OFF position, keyed different |
| KA-110A | Same as KA-110 except keyed alike |
| KA-111 | Double bitted flat key, removable in ON or OFF position SPDT switch, eight inch colored, keyed different |
| KA-111A | Same as KA-111 except keyed alike |
| EL101 | Replacement key for KA-109A, KA-110A |
| 2405 | Replacement key for KA-111A |

MCK Series

Mortise Cylinder Stations



MCK-1



MCK-4

Narrow or single gang mortise cylinder key switch stations. Choose between momentary action switch that remains active as long as it's depressed, or alternate action switch that alternates between open (disconnected) and closed (connected) each time it's pressed. Available with LED options.

Features

Standard Features

- Stainless steel wall plate accepts standard 1-1/8" mortise cylinder
- Tamper-proof and slotted-head screws included
- Mortise Cylinders not included, available separately (CY-1, CY-1A)

Options

- Momentary or alternate switch, see model chart
- SPDT or DPDT, see model chart
- No LED, green LED, green and red LEDs, see model chart
- Pneumatic time delay: 2 to 45 seconds, see model chart
- Add **WP** for weather resistant cover and surface mount box. Available for single gang models only.

Specifications

Electrical

- Contacts rated 4A at 28 VDC
- LEDs operate on 12 or 24 VDC/VAC
- Switch depth behind plate: 1-1/4"
- Switches terminated in colored leads

Operating Temperature

- +15 to 120F

| Switch Type | 1.75" Wide | 1.75" Wide Green LED | 1.75" Wide Green LED Red LED | Single Gang | Single Gang Green LED | Single Gang Green LED Red LED |
|--|------------|----------------------|------------------------------|-------------|-----------------------|-------------------------------|
| SPDT Momentary Action | MCK-1 | MCK-2 | MCK-3 | MCK-4* | MCK-5* | MCK-6* |
| SPDT Alternate Action | MCK-1-2 | MCK-2-2 | MCK-3-2 | MCK-4-2* | MCK-5-2* | MCK-6-2* |
| DPDT Momentary Action | MCK-1-3 | MCK-2-3 | MCK-3-3 | MCK-4-3* | MCK-5-3* | MCK-6-3* |
| DPDT Alternate Action | MCK-1-4 | MCK-2-4 | MCK-3-4 | MCK-4-4* | MCK-5-4* | MCK-6-4* |
| Pneumatic Time Delay (2 to 45 seconds) | N/A | N/A | N/A | MCK-4-5* | MCK-5-5* | MCK-6-5* |

*Weather resistant cover and surface mount back box available. Add "-WP" to model number for the weatherproof option.

CY-1 Series

Mortise Cylinders



Mortise cylinder with two keys. Available keyed different or keyed alike.

Features

Standard Features

- 1-1/8" standard mortise cylinder
- Straight cam
- Supplied with two keys

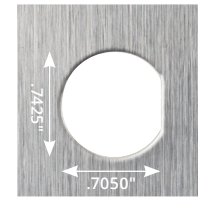
Options

- **CY-1** keyed different
- **CY-1A** keyed alike
- **CY-1AEXTRAKEY** extra key for keyed alike version only

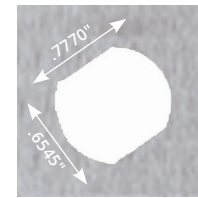
Mounting Plates

for ACE & Flat Key Switches

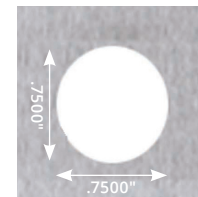
The Ace Key switches (KA-105 and KA-108 Series) use a single "D" hole while the Flat Key Switches (KA-109 and KA-110 Series) use a Medeco double "D" hole. KA-111 Series uses a 3/4" round hole.



*Single D
(RP-20)*



*Double D
(RP-21)*



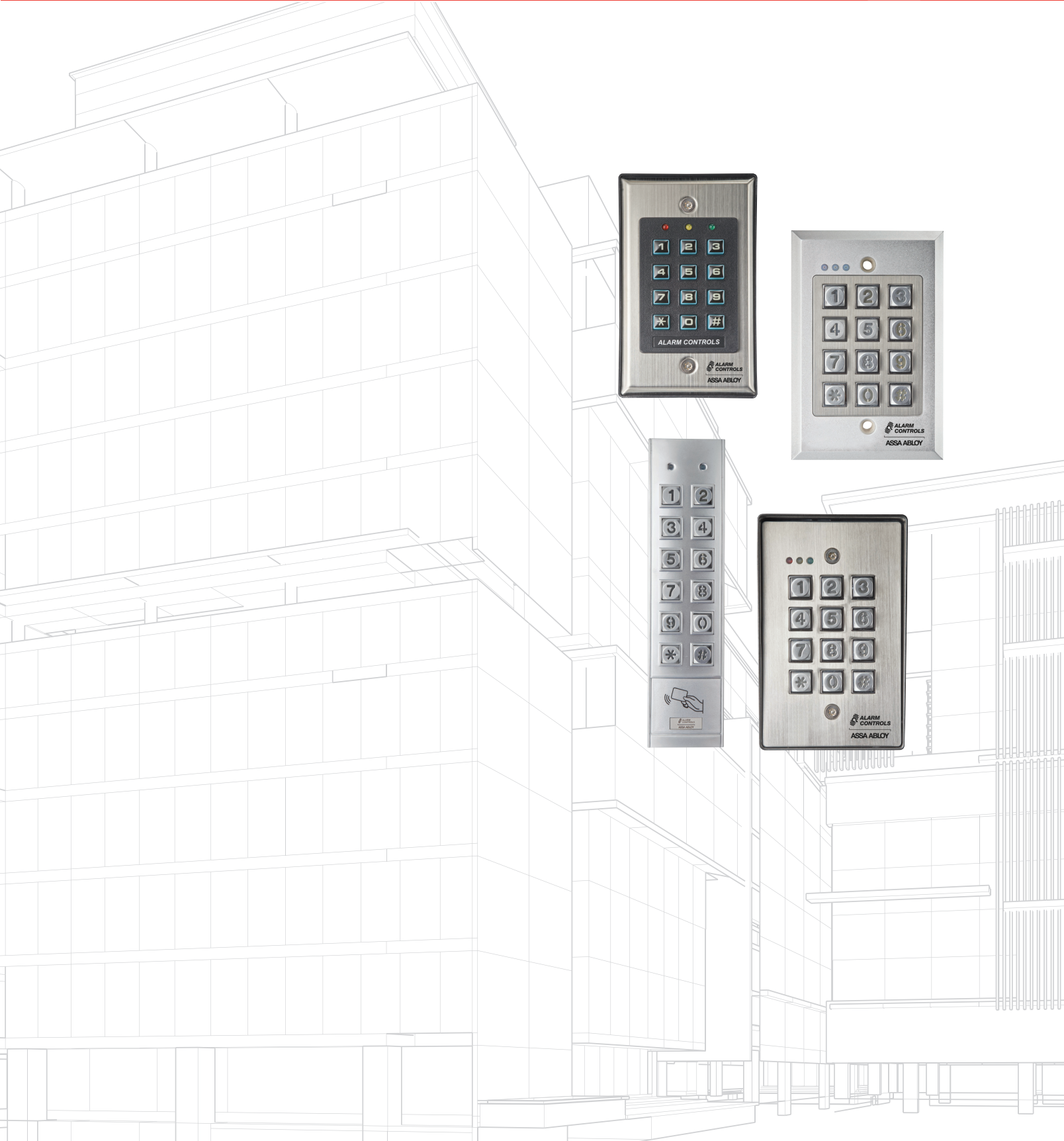
*3/4" Round
(RP-23)*

| | NARROW STILE PLATES | | | SINGLE GANG PLATES | | | |
|--|----------------------|----------------------|----------------------|-----------------------------|-----------------------------|--|--|
| Model | Slim SS No LED | Slim SS 1 GRN LED | Slim SS 1 RED LED | Single Gang SS No LED | Single Gang SS 1 GRN LED | Single Gang SS 1 RED LED | Single Gang Weather Cover Plate 1 RED & 1 Green 1/4" LED |
| All Ace Key Switches Models KA105-KA108A Inclusive | RP-24 | | | RP-20 * see below | | RP-07 RP-50 has 1 red & 1 green LED | WP-4 |
| Flat Key Switches Models KA-109 to KA110A Only | RP-25 | | CP1-1630 | RP-21 | | RP-08 | WP-6 |
| Flat Key Switches Models KA-111 to KA111A Only | RP-23SLIMLINE | | | RP-23 | | | |

* CP1-1272 RP-20 SG SS plate with single D hole screened ON OFF (ON @ 3 o'clock & OFF at 12 O'clock) - Minimum order 10 Pieces

Legend:
GRN = Green
SS = Stainless Steel

Digital Keypads



KP-100A

Digital Keypad



Self-contained digital keypad suitable for residential and commercial installations.

Features

Standard Features

- Single gang flush mount stainless steel plate with surface mount back box
- True 10-digit operation (10 digits plus * and # keys)
- Capacity up to 1000 user codes, length from 4 to 8 digits
- 50 visitor codes, programmable for one time use or with time limit
- Fully programmable from the keypad
- Programmable passage and false code lockout mode capabilities
- Built-in tamper switch
- Red, green, and yellow LEDs for status and programming feedback
- Fail safe or fail secure capable
- Request to Exit (REX) input

- Audible and visible key press; keys are backlit for visibility
- For indoor applications only
- 3 year warranty

Specifications

Dimensions

- Keypad: 2-3/4" W x 4-1/2" H x 5/32" D
- Surface Mount Back Box: 2-13/16" W x 4-5/8" H x 1-7/16" D

Electrical

- Operating Voltage: 12-24 VAC/VDC [+/- 10%]
- Operating Current:
 - 12 VDC: 40mA at rest, 100mA active
 - 24 VDC: 70mA at rest; 50mA active
- Output Relay: 1 SPDT dry contacts; 5A/30 VDC Max
- REX Input: N/O dry contact; 1mA/5VDC Max

- Tamper Switch: N/C dry contact; 50mA/24 VDC Max

Operating Temperature

- -4°F to +158°F [-20°C to +70°C]
- Humidity: 5-95% relative humidity non-condensing

Shipping Weight

- 0.5lb [0.23kg]

KP-200

Digital Keypad



Self-contained digital keypad. KP-200 is vandal-resistant and designed for indoor applications.

Features

Standard Features

- Surface mounted
- True 10-digit operation (10 digits plus * and # keys)
- Capacity up to 100 user codes, length from 4 to 8 digits
- Fully programmable from the keypad
- Programmable passage and false code lockout mode compatibilities
- Built-in tamper switch
- Red, green, and yellow LEDs for status and programming feedback
- Request to Exit (REX) input
- Die-cast metal keys with audible and visible key press; Keys are backlit for visibility in dark areas
- For indoor applications
- 3 year warranty

Specifications

Dimensions

- 3-1/5"W x 4-3/4" L x 3/5"D

Electrical

- Operating voltage: 12 or 24 VAC or VDC, auto sensing
- Operating Current: 78 mA relay opening; 16 mA at rest
- Output 1 relay: SPDT contact rating: 1A at 24 VDC
- Output 2 relay: SPDT contact rating 1A at 24 VDC; Jumper selectable. N/O or N/C Dry contacts.

Operating Temperature

- -4°F to +158°F
[-20°C to +70°C]

Shipping Weight

- 1 lb [0.45 kg]

KP-300

Digital Keypad

Self-contained, narrow stile digital keypad designed for pedestal/mullion mounting. Vandal resistant and weather resistant with durable metal keys and housing, suitable for indoor and outdoor applications.



Features

Standard Features

- Narrow stile mullion mount with die cast zinc alloy housing
- Narrow stile 10-digit operation (10 digits plus * and # keys)
- Operates with card only, user code and card, or user code only
- Multiple outputs allow control of up to two devices (1000 users on output 1, 100 on output 2)
- All users can be programmed for card and/or codes at the device
- 50 Visitor cards and/or codes can be programmed for one time use or with time limit at the device
- Programmable passage and false-code lockout mode capabilities
- Built-in tamper switch
- Green and yellow LEDs for status and programming feedback
- Fail safe or fail secure capable

- Die-cast metal keys with audible and visible key press; Keys are backlit for visibility in dark areas

- For indoor or outdoor applications
- 3 year warranty

Options

- Supplied with 2 EM cards. **EM-10** additional pack of 10 cards
- **EM-04** key fobs

Specifications

Certifications & Listings

- Conforms to IP65

Dimensions

- 7-5/64" H x 1-13/16" W x 1" D

Electrical

- Operating voltage: 12 VDC nominal, 11-15 VDC
- Operating Current: 60mA at rest; 95 mA active
- Output Relay 1: SPDT rated 2A at 24 VDC max; N/O and N/C dry contacts

- Output Relay 2: SPDT rated 1A at 24 VDC max; N/O and N/C dry contacts

Operating Temperature

- -4°F to +158°F [-20°C to +70°C]
- Humidity: 5-95% relative humidity non-condensing

Shipping Weight

- 1 lb [0.45 kg]

KP-400

Digital Keypad



Self-contained digital keypad. Vandal resistant and weather resistant with durable backlit metal keys, housing, and back box; designed for indoor and outdoor applications.

Features

Standard Features

- Surface mount with black back box and 302 stainless steel faceplate with tamper-proof screws
- True 10-digit operation (10 digits plus * and # keys)
- Multiple outputs allow control of up to two devices (100 users on output 1, 10 on output 2)
- Fully programmable from the keypad
- Programmable passage and false-code lockout mode capabilities
- Built-in tamper switch
- Red, green and yellow LEDs for status and programming feedback
- Request to Exit (REX) input
- Duress output and door prop open alarm
- Black powder coated die cast aluminum back box
- Die-cast metal keys with audible and visible key press; Keys are backlit for visibility in dark areas
- For indoor or outdoor applications
- 3 year warranty

Specifications

Certifications & Listings

- Conforms to IP66

Dimensions

- Keypad with Back Box: 3-1/8" W x 4-1/2" L x 1-3/4" to 2-1/2" D

Electrical

- Operating voltage: 12 or 24 VAC or VDC, auto sensing
- Operating Current: 12VDC: 10 mA at rest, 100 mA active; 24VDC: 22 mA at rest, 120 mA active
- Output 1: SPDT rated 5A at 24VDC
- Output 2: SPDT rated 1A at 24 VDC

Operating Temperature

- -4°F to +158°F [-20°C to +70°C]
- Humidity: 5-95% relative humidity non-condensing

Shipping Weight

- 1 lb [0.45 kg]

ElectricStrikes



AES-100

Electric Strike



Grade 1 dual-voltage electric strike for heavy-duty applications. For use with cylindrical locksets, mortise latch or mortise exit devices.

Features

Standard Features

- For use with 5/8" and 3/4" throw cylindrical locksets
- Strike depth: 1-1/2"
- Field selectable, Fail Secure/Fail Safe
- Non-handed for easy installation
- Mounting kit includes two 4-7/8" stainless steel faceplates (one round corner and one square corner)

Options

- **STR00004** 7-15/16" round corner faceplate, available separately

Specifications

Certifications & Listings

- BHMA Grade 1
- UL 1034 burglary-resistant listed

Holding Force

- Static Strength: 1500 lbs
- Dynamic Strength: 70 ft lbs

Endurance

- UL tested to 250,000 cycles

Electrical

- Current draw: 130mA at 12 VAC, 70mA at 24 VAC; 210mA at 24 VDC
- Dual-voltage 12/24 VAC/VDC; continuous duty operation on DC

AES-200

Electric Strike

Grade 2 electric strike for medium-duty applications. For use with cylindrical locksets with latchbolt monitor and buzzer.



Features

Standard Features

- For use with 5/8" and 3/4" throw cylindrical locksets
- With Latch Bolt Monitor and Buzzer
- Strike depth: 1-1/2"
- Field selectable, Fail Secure/Fail Safe
- Non-handed for easy installation
- Adjustable keeper
- Mounting kit includes two 4-7/8" stainless steel faceplates (one round corner and one square corner)
- Preload capable up to 70 lbs
- Built-in buzzer, sounds when voltage is applied

Options

- **STR00004** 7-15/16" round corner faceplate, available separately

Specifications

Certifications & Listings

- BHMA Grade 2

Holding Force

- Static Strength: 1000 lbs
- Dynamic Strength: 70 ft lbs

Electrical

- Dual voltage 12/24 VAC/VDC, continuous duty operation on DC
- Current draw 1 mA at 12 VDC/VAC, 70 mA at 24 VDC/VAC
- Strike monitored with SPDT dry contact

AES-300

Electric Strike



Flexible electric strike offers value and innovation in one compact product. Horizontal adjustability and small body design eliminates need to cut out the dust box making this a great option for retrofit applications.

Features

Standard Features

- For use with 5/8" cylindrical locksets
- Strike depth: 1-3/16"
- Available in fail secure only
- Non-handed for easy installation
- Small body design eliminates the need to cut out the dust box

Options

- **AES-30012SB**, **AES-30024SB** strike body available separately

- Spacer and keeper shims for horizontal adjustment available in KIT option
- Mounting Kit with multiple faceplates available in KIT options only

Specifications

Certifications & Listings

- BHMA Grade 2

Holding Force

- Static Strength: 1000 lbs
- Dynamic Strength: 50 ft lbs

Endurance

- UL tested to 250,000 cycles

Electrical

- Available in either 12 or 24 VAC or VDC
- Current draw: 200mA at 12 VAC/VDC, 100 mA at 24 VAC/VDC

| Series | Model | Description |
|-----------|--------------|---|
| AES-300 | AES-30012M1 | 12V strike body & ANSI metal jamb faceplate with rounded corners, for use with cylindrical locksets |
| | AES-30012M2 | 12V strike body & ANSI metal jamb faceplate with square corners, for use with cylindrical locksets |
| | AES-30012W1 | 12V strike body & ANSI wood jamb faceplate with rounded corners, for use with cylindrical locksets |
| | AES-30012KIT | 12V strike body & all faceplates, for use with cylindrical locksets |
| AES-30024 | AES-30024M1 | 24V strike body & ANSI metal jamb faceplate with rounded corners, for use with cylindrical locksets |
| | AES-30024M2 | 24V strike body & ANSI metal jamb faceplate with square corners, for use with cylindrical locksets |
| | AES-30024W1 | 24V strike body & ANSI wood jamb faceplate with rounded corners, for use with cylindrical locksets |
| | AES-30024KIT | 24V strike body & all faceplates, for use with cylindrical locksets |

AES Series Electric Strikes

Comparison Chart



AES Strike Family

| | AES-100 | AES-200 | AES-300 |
|-----------------------------------|--|--|--|
| Features | | | |
| Lockset Compatability | Cylindrical Lockset, Mortise Latch or Mortise Exit Device without Deadbolt | Cylindrical Locksets | Cylindrical Locksets |
| Handing | Non-Handed | Non-Handed | Non-Handed |
| Horizontally Adjustable | No | Yes | Yes* |
| Field Selectable | Yes - Fail Safe / Fail Secure | Yes - Fail Safe / Fail Secure | No - Fail Secure Only |
| Factory Tested | 1,500,000 Cycles | 500,000 Cycles | 500,000 Cycles |
| Latch Throw | Up to 3/4" Throw | Up to 5/8" Throw | Up to 5/8" Throw |
| Applications | | | |
| Frame Material | Hollow Metal or Aluminum | Hollow Metal or Aluminum | Hollow Metal, Aluminum or Wood |
| Specifications | | | |
| ANSI/BHMA Grade | Grade 1 | Grade 2 | Grade 2 |
| UL 1034 Burglary-Resistant | Yes | Yes | Yes* |
| Strike Body Depth | 1-1/2" | 1-1/2" | 15/16" |
| Holding Force | | | |
| Static Strength | 1,500 lbs | 1,000 lbs | 1,000 lbs |
| Dynamic Strength | 70 ft lbs | 70 ft lbs | 50 ft. lbs |
| Electrical | | | |
| Dual Voltage | Yes | Yes | No - Available in 12V or 24 models |
| Current Draw | 210mA @ 12 VDC 105mA @ 24 VDC 130mA @ 12 VAC 70mA @ 24 VAC | 200mA @ 12 VDC 70mA @ 24 VDC 130mA @ 12 VAC 70mA @ 24 VAC | 200mA @ 12 VAC/VDC 100mA @ 24 VAC/VDC |
| Options | | | |
| Faceplates | Rounded and Square included standard | Rounded and Square included standard | M1 ANSI 4-7/8" prep, hollow metal and aluminum, rounded corners M2 hollow metal, wood and aluminum, square corners W1 wood, rounded corners |

* Depending on faceplate used

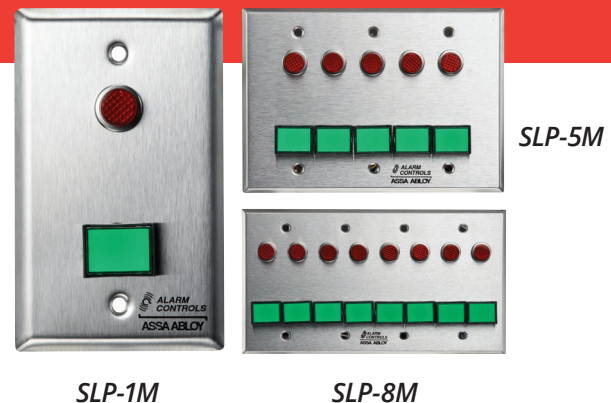
Monitoring & Control Stations



SLP-XM Series

Momentary Monitor & Control Stations

Monitor and control stations with rectangular illuminated DPDT momentary switches that remain active as long as they're depressed. Stations include LED status indicators and are designed to release or secure and monitor one or more electrified lock.



Features

Standard Features

- Release or secure and monitor one or more electrified lock
- Switches mounted on wall plate with stainless steel finish. 1,2,3,4 gang options available.
- 1/2" red LED status indicator
- Green momentary push button; hi-brightness LED illumination

Options

- **XM** with X designating the number of LEDs and illuminated momentary buttons. Specify 1 – 8 for that many LEDs/buttons.
- Custom legends, green and yellow LEDs, available as custom parts

Specifications

Dimensions

- Varies based on finished good

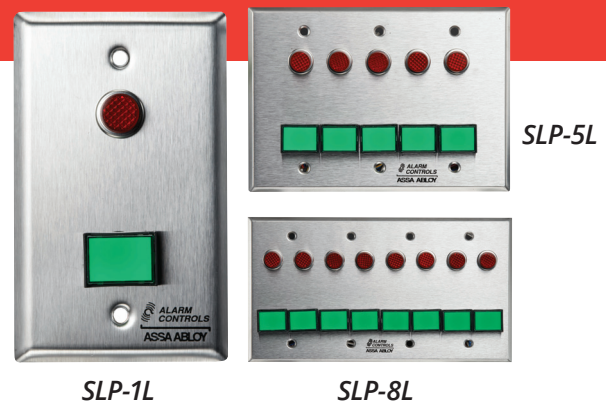
Electrical

- DPDT switch contacts rated 3A at 35 VDC or 120 VAC
- Switch depth behind plate: 1-1/2"
- LED operates on 12 or 24 VDC/VAC
- Switch and LED terminated with colored leads

SLP-XL Series

Latching Monitor & Control Stations

Monitor and control stations with rectangular illuminated DPDT latching switches that alternate between open (disconnected) and closed (connected) each time they're pressed. Stations include LED status indicators and are designed to release or secure and monitor one or more electrified lock.



Features

Standard Features

- Release or secure and monitor one or more electrified lock
- Switches mounted on wall plate with stainless steel finish. 1,2,3,4 gang options available.
- 1/2" red LED status indicator
- Green alternating push button; hi-brightness LED illumination

Options

- **XL** with X designating the number of LEDs and illuminated alternating buttons. Specify 1 - 8 for that many LEDs/buttons.
- Custom legends, green and yellow LEDs, available as custom parts

Specifications

Dimensions

- Varies based on finished good

Electrical

- DPDT switch contacts rated 3A at 35 VDC or 120 VAC
- Switch depth behind plate: 1-1/2"
- LED operates on 12 or 24 VDC/VAC
- Switch and LED terminated with colored leads

TS-55G

Momentary Monitor & Control Station

Monitor and control station with round illuminated DPDT momentary push button that remains active as long as it's depressed. Station includes LED status indicator and is designed to release or secure and monitor one electrified lock.



TS-55G

TS-55R

Features

Standard Features

- Release or secure and monitor one electrified lock
- Switches mounted on single gang wall plate with stainless steel finish
- 1-1/2" momentary green push button; hi-brightness LED illumination
- 1/2" red LED status indicator
- Button labeled "EXIT"

Options

- **TS-55R** with red push button
- **GR** guard ring
- **LUC** lift up cover

Specifications

Certifications & Listings

- IP65 standard

Dimensions

- 2-3/4" x 4-1/2"

Electrical

- One N/O and one N/C contact rated 10A at 35 VDC or 120 VAC
- LED operates on 12 or 24 VDC/VAC

TS-56G

Latching Monitor and Control Station

Monitor and control station with round illuminated DPDT latching push button that alternates between open (disconnected) and closed (connected) each time it's pressed. Station includes LED status indicator and is designed to release or secure and monitor one electrified lock.



TS-56G

TS-56R

Features

Standard Features

- Release or secure and monitor one electrified lock
- Switches mounted on single gang wall plate with stainless steel finish
- 1/2" red LED status indicator
- 1-1/2" alternating green push button; hi-brightness LED illumination
- Button labeled "EXIT"

Options

- **TS-56R** with red push button
- **GR** guard ring
- **LUC** lift up cover

Specifications

Certifications & Listings

- IP65 standard

Dimensions

- 2-3/4" x 4-1/2"

Electrical

- One N/O and one N/C contact rated 10A at 35 VDC or 120 VAC
- LED operates on 12 or 24 VDC/VAC

DTC

Desktop Console



Desktop Console with single or multiple switch configurations. Choose between momentary action switches that remain active as long as they're depressed or alternate action switches that alternate between open (disconnected) and closed (connected) each time they're pressed. Designed to work with door status or lock status sensors in order to supervise and control several entry points from one main location.

Configurable Options

- **M1** with 1-2 switches, specify number of switches when ordering
- **M2** with 3-12 switches, specify number of switches when ordering
- **M3** with 13-40 switches, specify number of switches when ordering
- Console: specify **G** (beige) or **K** (black)
- Switch type, specify: SPDT/DPDT, momentary/alternate
- Lens color: green, red, yellow, blue, white

- Illumination: None, 12 VDC, 24 VDC
- Button labels available as a custom part

Specifications

Console Dimensions

- M1: 3-3/10"W x 5-7/10"L x 1-1/2"H
- M2: 6-9/10"W x 9-2/5"L x 2-1/2"H
- M3: 14"W x 8-3/10" x 3" (rear)/1-1/2" (front)

Switch Dimensions

- 5/8" x 7/8"

Electrical

- LED current draw: 9mA nominal
- Contact rated 3A at 24 VDC
- Switches terminated in 22AWG colored leads
 - Common: white
 - N/C: red
 - N/O: blue
 - LED+: Yellow
 - LED-: Black

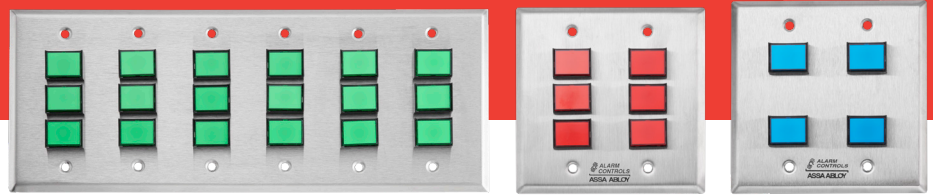
How To Order

| CONSOLE | CONSOLE COLOR | SWITCH QUANTITY | SWITCH TYPE | LENS COLOR | ILLUMINATION |
|--------------------------|------------------|-----------------------------|----------------------------------|-------------------|-------------------|
| M2 | K | 6 | A | G | V1 |
| M1 1-2 switches | G - Beige | Number of switches required | A - SPDT Momentary Action | G - Green | N - None |
| M2 3-12 switches | K - Black | | B - SPDT Alternate Action | R - Red | V1 - 12VDC |
| M3 13-40 switches | | | C - DPDT Momentary Action | Y - Yellow | V2 - 24VDC |
| | | | D - DPDT Alternate Action | B - Blue | |
| | | | | W - White | |

For pricing on custom Desktop Consoles, please contact the factory at 800.461.3007

CP

Control Panels



CP Control Panel are available in sizes from one to six gangs with single or multiple switch configurations. Choose between momentary action switches that remains active as long as they're depressed or alternate action switches that alternate between open (disconnected) and closed (connected) each time they're pressed. Designed to work with door status or lock status sensors in order to supervise and control several entry points from one main location.

Features

Standard Features

- Switches mounted on wall plates with 430 stainless steel finish

Options

- Number of switches (1-24 total): Each gang accepts up to four switches, specify number of switches when ordering
- Switch type, specify: SPDT/DPDT, momentary/alternate

- Lens color: green, red, yellow, blue, white
- Illumination: None, 12 VDC, 24 VDC
- For a control panel that requires multiple switch colors, multiple switch types, or custom labelling, please contact factory for custom part numbers.

Specifications

Dimensions

- Switch: 5/8" x 7/8"
- Plate: varies based on finished good

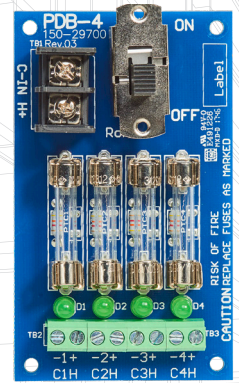
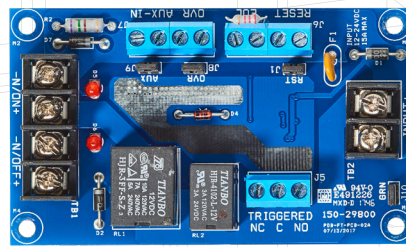
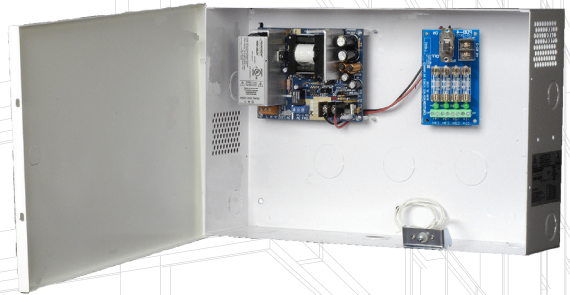
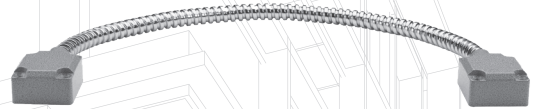
Electrical

- N/O and N/C contacts rated 10A at 35 VDC or 120 VAC
- LED operates on 12 or 24 VDC

How To Order

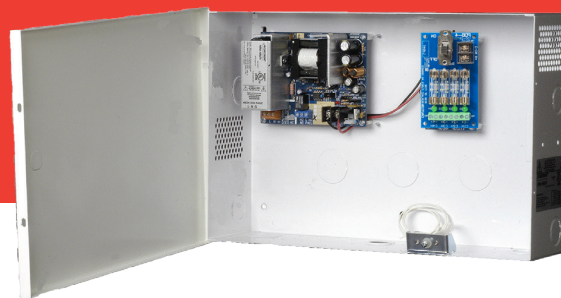
| MODEL | PLATE SIZE (GANGS) | SWITCH QUANTITY | SWITCH TYPE | LENS COLOR | ILLUMINATION |
|-----------|--------------------|-----------------------|----------------------------------|-------------------|-------------------|
| CP | 2 | 8 | A | R | V1 |
| CP | 1 - Gang | Up to 4 (max) | A - SPDT Momentary Action | G - Green | N - None |
| | 2 - Gang | Up to 8 (max) | B - SPDT Alternate Action | R - Red | V1 - 12VDC |
| | 3 - Gang | Up to 12 (max) | C - DPDT Momentary Action | Y - Yellow | V2 - 24VDC |
| | 4 - Gang | Up to 16 (max) | D - DPDT Alternate Action | B - Blue | |
| | 5 - Gang | Up to 20 (max) | | W - White | |
| | 6 - Gang | Up to 24 (max) | | | |

Power



APS-200 Series

Power Supplies



Dual voltage switching power supply with battery charger designed to provide power for magnetic locks, electric strikes, card readers, sensors, access control boards and other components of access control systems.

Features

Standard Features

- 2 Amp Power Supply mounted in UL listed enclosure
- Tolerates brownout or overvoltage input +/- 15% of nominal voltage
- Thermal shutdown protection with auto restart
- Circuit breaker protects against overcurrent and reverse battery faults (batteries sold separately)
- Dedicated battery charging circuit prevents overvoltage on locking devices
- Low noise design provides better than linear performance
- Limited lifetime warranty

Options

- **APS-2004C** 2 Amp Power Supply with one PD4C, four output PTC protected distribution boards
- **APS-200FT** 2 Amp Power Supply with one PDFT fire relay module

Specifications

Certifications & Listings

- UL 294 listed
- UL 603 listed
- ULC-S318 Listed
- ULC-S533 Listed
- RoHS Compliant
- REACH Compliant

Dimensions

- Cabinet Size: 14" L x 14" W x 4-3/4" D

Electrical

- Dual voltage 12 or 24 VDC field selectable output
- 115 or 230 VAC input
- Supports up to two sealed gel, AGM or wet lead acid batteries
- Up to 90% efficiency
- Low voltage ripple design as low as 240mV p-p

Operating Temperature

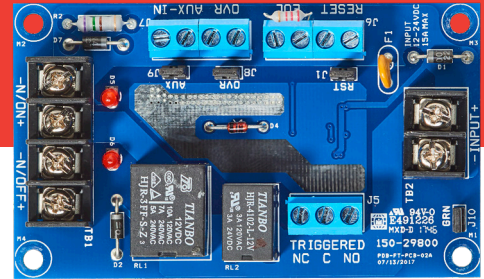
- -4 to +122F [-20 to +50C]

Shipping Weight

- 12.7 lbs [5.76kg]

PDFT

Fire Relay Module



The PDFT Fire Relay Module is triggered in response to a fire system alarm condition. Transferred power can be used to unlock doors to allow free egress in case of emergency.

Features

Standard Features

- Individual LED indicators show which output is powered
- Form C contact indicates trigger status
- Latching or non-latching mode
- Can provide ground supervision via jumper configuration
- Output triggers include:
 - N/O or N/C with supervised end-of-line resistor
 - N/C override switch trigger input
 - N/C Auxiliary switch trigger input
 - Ground fault detection
 - Trigger status reporting
- Limited lifetime warranty

Specifications

Certifications & Listings

- UL 294 listed
- UL 603 listed
- ULC-S318 Listed
- ULC-S533 Listed

Dimensions

- Board: 3-3/4" H x 2-1/4" W x 13/16" D
- Mounting: 3-7/16" H x 1-7/8" W

Electrical

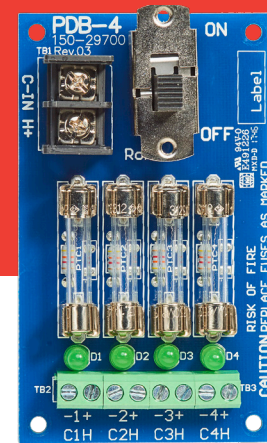
- 70 mA used for relay control
- Universal 12-24 VDC input
- 1A or 2A outputs
- 4A rate of relay

Shipping Weight

- .75 lbs [0.45 kg]

PD4C

Power Distribution Module



Splits the primary AC or DC output from a power supply into multiple outputs of the same voltage type to separate equipment onto individual circuits.

Features

Standard Features

- 1A glass fuse
- Splits main board output into multiple outputs
- Each output has a status LED indicator
- Main input has a status LED indicator
- Accepts AC or DC input/ provides same output
- Has on/off power switch
- Separate fuse for main input surge protection-standard automotive ATO sizes
- Limited lifetime warranty

Specifications

Certifications & Listings

- UL 294 listed
- UL 603 listed
- ULC-S318 Listed
- ULC-S533 Listed

Dimensions

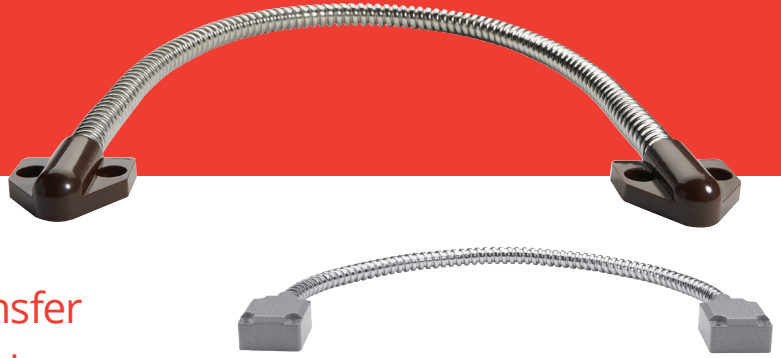
- Board: 3-3/4" H x 2-1/4" W x 1" D
- Mounting: 3-7/16" H x 1-7/8" W

Electrical

- 12 V or 24 V output (based on power supply output)
- Fuses for individual outputs are standard 3AGC

DL-1, DL-2

Armored Door Loops



18" armored door loop used to transfer low-voltage electrical current from the door frame to the door. Available with either plastic (DL-1) or aluminum alloy (DL-2) end caps. Mounting hardware included.

Features

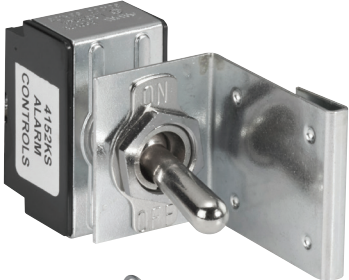
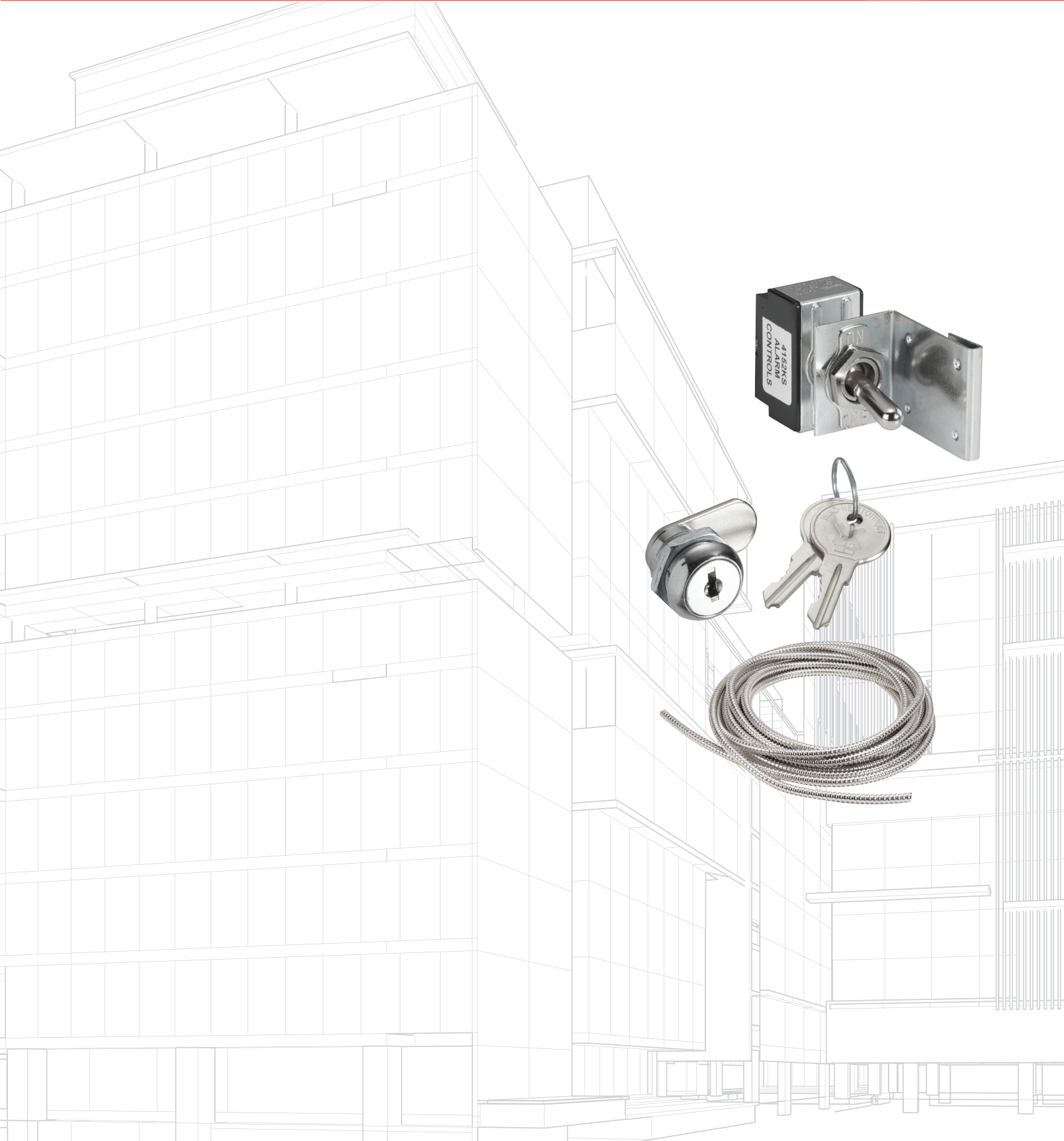
Standard Features

- 18" long armored door loop
- Mounting hardware included
- End Caps:
 - **DL-1:** white and brown plastic
 - **DL-2:** aluminum alloy
- Steel jacket resists abrasion and damage
 - **DL-1:** .250 I.D. steel
 - **DL-2:** rugged .375 I.D steel

Optional Features

- Custom lengths available
- **DL-2ELECTRO** DL-2 with ElectroLynx connector

PowerAccessories



4152

Kill Switch

- Provides a safe and convenient way to disconnect panel power by removing power from back-up battery and AC source
- DPST toggle switch with 10 Amp contacts
- Unique clip allows quick and easy installation



CL-3

Camlock

- Used to secure control panel from tampering
- 1" cam
- Supplied with two single bitted flat keys, keyed alike
- Steel chrome plated lock
- Speed clip secures cam lock to panel cover
- Optional **CL-3 (50)** multi pack of 50



DL2EC

Door Loop Accessory

- DL-2 End Cap only



AC25

Armored Cables

- 25' long
- 0.1875 I.D. Armored Cable



AC30

Armored Cables

- 30' long
- .375 I.D Armored Cable



System Accessories



RT Series

Wireless Transmitters



Wireless remote transmitters allow access control for up to three doors from one device. Ideal for front desk/reception applications or hard-to-wire locations. Designed to work with magnetic locks, electric strikes, keypads, gate operators and door operators. Kits include channel receiver and transmitter with mount and keychain.

Features

Standard Features

- Transmitter can be mounted under a desk or on a wall
- 12" antenna with up to 300' range
- Rolling code with over 1 billion code combinations
- Latching option keeps doors unlocked until button is pressed again
- Receiver can be controlled by up to 30 transmitters
- Receiver has a 5 second momentary output

Options

- **RT-1** one receiver, two transmitters
- **RT-1T** additional transmitter
- **RT-1TW** additional transmitter with wire lead
- **RT-3** three receivers, one transmitter
- **RT-3R** additional receiver

Specifications

Certifications & Listings

- CE Certified
- RoHS compliant

Dimensions

- 2-1/2"L x 1-1/4"W x 3/4"D

Electrical

- Receiver operates on 12 or 24 VDC/VAC
- Max current draw 50mA
- Relay SPDT contact rated 1A at 30 VDC or 120 VAC
- Working frequency: 433.92 MHz

Operating Temperature

- -4 to +140F

TS-34 Series

Mounted Wall Buzzers



Audible buzzer station for mounting on single gang or narrow wall plate

Features

Standard Features

- Buzzer mounted on wall plate with stainless steel finish
- Sound level 85db at 3ft

Options

- **TS-34** mounted on single gang wall plate with 430 stainless steel finish
- **TS-34N** mounted on narrow wall plate with 302 stainless steel
- Finishes: multiple plate options available
- Custom screening available

Specifications

Certifications & Listings

- CE Certified
- RoHS compliant

Electrical

- Operates on 3 to 28 VDC
- 6" red and black leads

TS-41

Mounted Wall Buzzer



Sonalert buzzer mounted on single gang wall plate

Features

Standard Features

- Buzzer mounted on single gang wall plate with stainless steel finish
- Sound level 85db at 3ft

Options

- Finishes: multiple plate options available
- Custom screening available
- **SCVC** volume control

Specifications

Electrical

- Current draw 3mA at 6VDC, 18mA at 28 VDC
- 6" red and black leads
- Screw terminals

TS-42

Mounted Wall Buzzer



LA32 buzzer mounted on single gang wall plate

Features

Standard Features

- Buzzer mounted on single gang wall plate with stainless steel finish
- Sound level 80db at 3ft

Options

- Finishes: multiple plate options available
- Custom screening available

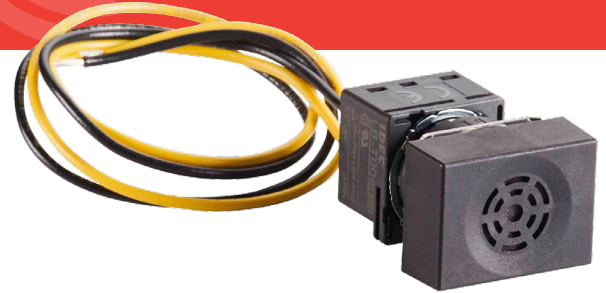
Specifications

Electrical

- Current draw 25mA at 12VDC
- Terminated with wire leads

LA32

Buzzer



LA32 buzzer can be mounted in 5/8" hole on a single gang wall plate

Features

Standard Features

- Sound level 80 dB
- Buzzer mounts in 5/8" hole on single gang wall plate
- Removable contact blocks
- Bezel shaped head made of plastic

Options

- Available pre-mounted on a single gang wall plate (**TS-42**)
- Single gang wall plate available for self-mounting (**RP-23A**)

Specifications

Dimensions

- Required mounting hole: 5/8"

Electrical

- Operates on 12 VDC
- Supplied with wire leads

SC628

Sonalert Buzzer



Sonalert buzzer can be mounted in 1-1/8" hole on a single gang wall plate

Features

Standard Features

- Sound level 68 to 80dB
- Medium sound level; Continuous tone
- Buzzer mounts in 1-1/8" hole on single gang wall plate

Options

- Available pre-mounted on a single gang wall plate (**TS-41**)
- Single gang wall plate available for self-mounting (**RP-22**)
- **SCVC** Sonalert volume control

Specifications

Dimensions

- Required mounting hole: 1-1/8"

Electrical

- Operates on 6 to 28 VDC
- Screw terminals

PA-100

Piezo Buzzer



Piezo buzzer can be mounted in 3/4" hole on a single gang wall plate

Features

Standard Features

- Sound level 90 dB
- Continuous tone
- Buzzer flange mounts in 3/4" hole on single gang wall plate

Options

- Available pre-mounted on a narrow stile (**TS-34N**) or standard single gang wall plate (**TS-34**)
- Wall plates available for self-mounting: slimline (**RP-23SLIMLINE**), narrow stile (**TS-34NPO**), or standard single gang (**RP-23**)

Specifications

Dimensions

- Required mounting hole: 3/4"

Electrical

- Operates on 3 - 24 VDC
- 6" red and black leads

PA-200

Piezo Chime



Piezo chime can be mounted in 1-1/4" hole on a single gang wall plate

Features

Standard Features

- Sound level 80 to 85 dB
- Chime mounts in 1-1/4" hole on single gang wall plate
- Chime can be flange mounted

Options

- Available pre-mounted on a single gang wall plate (**TS-43**)
- Single gang wall plate available for self-mounting (**RP-22E**)

Specifications

Dimensions

- Required mounting hole: 1-1/4"

Electrical

- Operates on 12 -24 VDC
- Current draw 95mA at 12 VDC, 140mA at 24 VDC
- 6" red, blue, and black leads

PA-300

Dual Tone Piezo Buzzer



Piezo buzzer with adjustable tone can be mounted in 3/4" hole on a single gang wall plate

Features

Standard Features

- Buzzer mounts
- Sound level 85db
- Continuous and slow pulse tone
- Buzzer mounts in 3/4" hole
- Bezel shaped case made of plastic

Options

- Wall plates available for self-mounting: slimline (**RP-23SLIMLINE**), narrow stile (**TS-34NPO**), or standard single gang (**RP-23**)

Specifications

Dimensions

- Required mounting hole: 3/4"

Electrical

- Operates on 3 to 24 VDC
- 6" red, yellow, and black leads

AI-624

Audio Alert Indicator



Mechanical buzzer

Features

Standard Features

- Sound level 92dB
- Continuous tone
- Mounts in 1-1/4" hole on single gang wall plate
- Can be flange mounted

Specifications

Dimensions

- Required mounting hole: 1-1/4"

Electrical

- Operates on 20 - 28 VDC
- Supplied with wire leads

MT-1

Mini Adjustable Timer



Indicating shunt switch with alternate action push button

Features

Standard Features

- Encapsulated for moisture protection
- Time setting adjustable from 2 to 45 seconds
- Mounts with adhesive foam tape

Options

- **MT-1F** fail-safe option

Specifications

Dimensions

- 2"H x 2"W x .5"D

Electrical

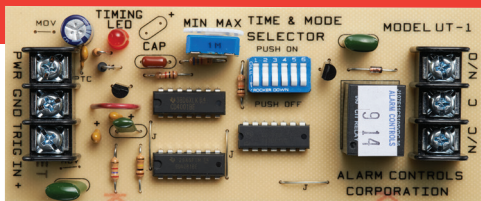
- N/O trigger 12 or 24 VDC
- SPDT contact rated 2A at 35 VDC or 125 VAC
- Current draw: 37mA max
- Relay operating mode: one shot

Operating Temperature

- -13 to +158F

UT-1

Universal Timer



Flush ivory momentary action push button switch

Features

Standard Features

- Four modes of operation: delay on operate, delay on release, one shot, pulsing
- Time setting adjustable from 1 second to 1 hour
- Mounts with adhesive foam tape

Options

- **UT-124VOLT** operates on 24 VDC

Specifications

Dimensions

- 2-1/8" x 5-3/16"

Electrical

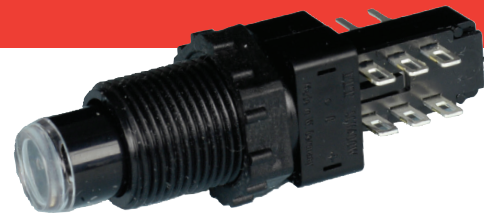
- Operates on 12 VDC
- SPDT contact rated 12A at 28 VDC
- Current draw: 37mA max
- Relay operating mode: one shot

Operating Temperature

- -13 to +158F

FA-200

Push Button Switch



Indicating shunt switch with alternate action push button

Features

Standard Features

- Alternate action push button can be field converted to momentary action
- Indicator changes to orange when depressed
- Provided with solder terminals; wired versions available
- Black plastic dress nut and lock nut
- Standard with modified 10C (silver) guard ring
- Mounts in 9/16" hole

Options

- **F-200(50)** additional pack of 50 switches
- Single gang wall plate available for self-mounting (**RP-44**)

Specifications

Electrical

- DPDT contacts rated 2A at 28 VDC

450

Push Button Switch



Flush ivory momentary action push button switch

Features

Standard Features

- Momentary push button switch
- Ivory flush mount
- Mounts in 5/8" hole

Options

- **450(25)** additional pack of 25 push button switches
- Single gang wall plate available for self-mounting (**RP-100**)

Specifications

Electrical

- Contacts rated .5A at 35 VDC

K-05

Push Button Switch



Black momentary action push button switch

Features

Standard Features

- N/C momentary black push button switch
- Mounts in 1/2" hole
- Provided with two nuts; additional dress nut available separately

Options

- **K-05(25)** additional pack of 25 switches
- 10C guard ring available separately
- Single gang wall plate available for self-mounting (**RP-100**)

Specifications

Electrical

- N/C contacts rated .75A at 125 VDC
- 1/4" faston/solder terminals; 12" leads with faston terminals available

K-13

Push Button Switch



Red momentary action push button switch

Features

Standard Features

- N/O momentary red push button switch
- Mounts in 1/2" hole
- Provided with two nuts; additional dress nut available separately

Options

- **K-13(25)** additional pack of 25 switches
- 10C guard ring available separately
- Single gang wall plate with available for self-mounting (**RP-100**)

Specifications

Electrical

- N/O contacts rated .75A at 125 VDC
- 1/4" faston/solder terminals; 12" leads with faston terminals available

LEDs



1/4" LEDs

- 1/4" lens with domed top and .280 black bezel
- LEDs mount in 1/4" hole
- Color options: green, yellow, bi-color, red flashing, blue, red
- LEDs have built-in resistor and operate on 12 or 24 VDC or VAC
- LEDs terminated with 6" x 20 gauge red and black leads
- Available individually or in packages of 10

| MODEL | DESCRIPTION |
|--------|--------------------------|
| LDG | Green |
| LDY | Yellow |
| LDR-B | Bi-color (red & green) |
| LDRF | Red flashing |
| LDB | Blue |
| LDR120 | Red operated on 120VAC |
| LDG120 | Green operated on 120VAC |



1/2" LEDs

- 1/2" lens with raised cylinder and chrome bezel
- LEDs mount in 1/2" hole
- Color options: red, green, yellow, blue
- LEDs have built-in resistor and operate on 12 or 24 VDC or VAC
- LEDs terminated with 6" x 18 gauge red, white, and black leads
- Available individually (blue only) or in packages of 10

| MODEL | DESCRIPTION |
|-------|-------------|
| LDR-L | Red |
| LDG-L | Green |
| LDY-L | Yellow |
| LDB-L | Blue |

ProductIndex

| PRODUCT | PAGE # | PRODUCT | PAGE # | PRODUCT | PAGE # | PRODUCT | PAGE # |
|----------|--------|---------------|--------|------------|--------|-------------|--------|
| 10C | N/S | AM6305 | 14 | DUC-4B | 14 | KP-400 | 89 |
| 320S | 3 | AM6310 | 17 | DUC-4C | 14 | KR Series | 21 |
| 426 | N/S | AM6320 | 16 | DUC-5B | 14 | KR-1KEY | 49 |
| 450 | 117 | AM6320C | 16 | DUC-5C | 14 | LA32 | 112 |
| 450(25) | 117 | AM6325 | 16 | DUC-6B | 14 | LDB | 118 |
| 600D | 5 | AM6326 | 16 | DUC-6C | 14 | LDB-L | 118 |
| 600DLB | 5 | AM6330 | 14 | DUC-7B | 14 | LDG | 118 |
| 600EX | N/S | AM6330-DURO | 14 | DUC-7C | 14 | LDG-L | 118 |
| 600EXZ | N/S | AM6331 | 14 | DUC-8B | 14 | LDG120 | 118 |
| 600L | 4 | AM6332 | 14 | DUC-8C | 14 | LDR-B | 118 |
| 600LB | 4 | AM6338 | 17 | DUC-9B | 14 | LDRF | 118 |
| 600S | 4 | AM6360 | 15 | DUC-9C | 14 | LDR-L | 118 |
| 600WP | 6 | AM6361 | 15 | EB Series | 25 | LDR120 | 118 |
| 856LEDSM | 27 | AM6362 | 16 | EL101 | 81 | LDY | 118 |
| 1200D | 8 | AM6370 | 17 | EXP-1 | 55 | LDY-L | 118 |
| 1200L | 7 | AM6370C | 17 | EXP-2 | 55 | LNB-6 | 10 |
| 1200EX | N/S | AM6375 | 17 | EXP-15 | 55 | LNB-6-SREX | 10 |
| 1200EXZ | N/S | APS-200 | 103 | EXP-25 | 55 | LNB-12 | 10 |
| 1200LB | 7 | APS-200FT | 103 | FA-200 | 116 | LNB-12-SREX | 10 |
| 1200S | 7 | APS-2004C | 103 | FA-200(50) | 116 | LUC | N/S |
| 1200WP | 9 | CL-3 | 108 | FT-1 | N/S | LUCS | N/S |
| 2405 | 81 | CP Series | 101 | FT-2 | N/S | MCK Series | 82 |
| 3012 | N/S | CP1 Series | * | GBS-1 | 53 | MP-20 | 62 |
| 3024 | N/S | CP1-MREX | 58 | GDH | 15 | MP-21 | 62 |
| 4152 | 108 | CP2 Series | * | GR | N/S | MP-26 | 62 |
| 30538 | N/S | CP3 Series | * | JN-1 | 15 | MP-26A | 62 |
| 30583 | N/S | CP4 Series | * | JN-50 | 15 | MP-28 | 63 |
| AC25 | 108 | CY-1 | 83 | JP Series | 57 | MP-29 | 63 |
| AC30 | 108 | CY-1A | 83 | K-05 | 117 | MP-30 | 63 |
| AES-100 | 91 | CY-1AEXTRAKEY | 83 | K-05(25) | 117 | MP-31 | 63 |
| AES-200 | 92 | DB-1 | 15 | K-13 | 118 | MP-44 | 63 |
| AES-300 | 93 | DE-1 | 51 | K-13(25) | 118 | MP-44 | 63 |
| AI-624 | 115 | DE-1R | 51 | KA-105 | 80 | MOMENTARY | |
| AM3300 | 14 | DJ-1 | 15 | KA-105A | 80 | MT-1 | 115 |
| AM3305 | 14 | DL-1 | 106 | KA-106 | 80 | NTS-1 | 54 |
| AM3310 | 17 | DL-2 | 106 | KA-106A | 80 | NTS-2 | 54 |
| AM3315 | 17 | DL-24 | N/S | FA-107 | 80 | NTS-3 | 54 |
| AM3320 | 16 | DL-30 | N/S | KA-107A | 80 | PD4C | 105 |
| AM3320C | 16 | DL-36 | N/S | KA-107ANC | 80 | PDFT | 104 |
| AM3325 | 16 | DL-48 | N/S | KA-108 | 80 | PL910 | 80 |
| AM3326 | 16 | DL-60 | N/S | KA-108A | 80 | PL927 | 80 |
| AM3330 | 14 | DL2EC | 108 | KA-109 | 81 | REB-1A | 59 |
| AM3331 | 14 | DL-2ELECTRO | 106 | KA-109A | 81 | REB-1ADURO | 59 |
| AM3332 | 14 | DTC Series | 100 | KA-110 | 81 | RP-01 | 64 |
| AM3335 | 17 | DUC-1B | 14 | KA-110A | 81 | RP-01A | 64 |
| AM3335A | 17 | DUC-1C | 14 | KA-111 | 81 | RP-01M | 64 |
| AM3370 | 16 | DUC-2B | 14 | KA-111A | 81 | RP-01MA | 64 |
| AM3370C | 17 | DUC-2C | 14 | KP-100A | 86 | RP-01SG | 64 |
| AM3375 | 17 | DUC-3B | 14 | KP-200 | 87 | RP-02 | 64 |
| AM6300 | 14 | DUC-3C | 14 | KP-300 | 88 | RP-02SS | 64 |

NOTES: * = Custom Part N/S = Not Shown Check Price List for full listing of available part numbers.

ProductIndex *continued*

| PRODUCT | PAGE # | PRODUCT | PAGE # | PRODUCT | PAGE # | PRODUCT | PAGE # |
|----------------|--------|---------------|--------|------------|--------|------------|--------|
| RP-03 | 65 | RP-44 | 76 | TS-2-2T | 28 | TS-14R | 42 |
| RP-03A | 65 | RP-44SLIM | 76 | TS-2BLANK | 27 | TS-15 | 43 |
| RP-03M | 65 | RP-45 | 76 | TS-2ENTER | 27 | TS-16 | 43 |
| RP-03MA | 65 | RP-45SLIMLINE | 76 | TS-2R | 27 | TS-16302 | 43 |
| RP-03SG | 65 | RP-46 | 76 | TS-2T | 28 | TS-17 | 49 |
| RP-04 | 65 | RP-46P/F/M | 76 | TS-2TBLANK | 28 | TS-18 | 50 |
| RP-04L | 65 | RP-46P/F/MC | 76 | TS-2TENTER | 28 | TS-18D | 50 |
| RP-05 | 66 | RP-47 | 76 | TS-2TRED | 28 | TS-19 | 50 |
| RP-05SLIM | 66 | RP-48 | 76 | TS-3 | 29 | TS-20 | 50 |
| RP-06 | 66 | RP-49 | 77 | TS-3-2 | 29 | TS-20D | 50 |
| RP-07 | 67 | RP-49MOM | 77 | TS-3-2T | 30 | TS-21B | 37 |
| RP-08 | 67 | RP-50 | 77 | TS-3BLANK | 29 | TS-21G | 37 |
| RP-09 | 68 | RP-50M | 77 | TS-3ENTER | 29 | TS-21GPN | 44 |
| RP-09L | 68 | RP-100 | 78 | TS-3T | 30 | TS-21R | 37 |
| RP-09LSLIMLINE | 68 | RP100302 | 78 | TS-3TD | 30 | TS-21RPN | 44 |
| RP-09SLIMLINE | 68 | RP100SLIM | 78 | TS-4 | 31 | TS-23 | 48 |
| RP-20 | 68 | RPX Series | * | TS-4-2 | 31 | TS-25 | 52 |
| RP-21 | 69 | RT-1 | 110 | TS-4-2T | 32 | TS-26 | 52 |
| RP-22 | 69 | RT-1T | 110 | TS-4TD | 32 | TS-27B | 38 |
| RP-23 | 70 | RT-1TW | 110 | TS-5 | 33 | TS-27G | 38 |
| RP-23A | 70 | RT-3 | 110 | TS-5-2 | 33 | TS-27R | 38 |
| RP-23SLIMLINE | 70 | RT-3R | 110 | TS-5-2T | 34 | TS-27T | 38 |
| RP-24 | 70 | PA-100 | 113 | TS-5T | 34 | TS-32 | 22 |
| RP-24SG | 70 | PA-200 | 114 | TS-5TD | 34 | TS-32B | 22 |
| RP-25 | 70 | PA-300 | 114 | TS-6 | 35 | TS-32G | 22 |
| RP-26 | 71 | PBL Series | 23 | TS-6L | 35 | TS-33 | N/S |
| RP-26A | 71 | PBM Series | 24 | TS-6T | 35 | TS-34 | 111 |
| RP-26ASLIM | 71 | PD Series | 56 | TS-7 | 36 | TS-36 | 39 |
| RP-26SLIM | 71 | PD4C | 105 | TS-7L | 36 | TS-36302 | 39 |
| RP-27 | 71 | PDFT | 104 | TS-7T | 35 | TS-40 | 40 |
| RP-27A | 71 | PN Series | 56 | TS-8 | 35 | TS-40R | 40 |
| RP-27ASLIM | 71 | PS Series | 56 | TS-8L | 35 | TS-41 | 111 |
| RP-27SLIM | 71 | PT Series | 56 | TS-8T | 35 | TS-42 | 111 |
| RP-28 | 72 | SC628 | 113 | TS-9 | 36 | TS-50 | 41 |
| RP-28302 | 72 | SF-117 | N/S | TS-9L | 36 | TS-50B | 41 |
| RP-28BI | 72 | SLP-_L Series | 97 | TS-9T | 36 | TS-50G | 41 |
| RP-28FLASHING | 72 | SLP-_M Series | 96 | TS-10 | 46 | TS-55G | 98 |
| RP-28L | 72 | SMB-01 | N/S | TS-10302 | 46 | TS-55R | 98 |
| RP-28L302 | 72 | SMB-01A | N/S | TS-10T | 46 | TS-56G | 99 |
| RP-28SL | 72 | SMB-3 | N/S | TS-11 | 46 | TS-56R | 99 |
| RP-29 | 72 | SMB-3D | N/S | TS-11T | 46 | TS-60 | 45 |
| RP-29L | 72 | SPN Series | * | TS-12 | 47 | UT-1 | 116 |
| RP-29L302 | 72 | SPX Series | * | TS-12302 | 47 | UT-124VOLT | 116 |
| RP-29LSLIMLINE | 72 | SREX-100 | 58 | TS-12T | 47 | WP-4 | N/S |
| RP-29SLIMLINE | 72 | T-7P | N/S | TS-13 | 47 | WP-6 | N/S |
| RP-30 | 73 | TS-1 | 26 | TS-13T | 47 | WPC | N/S |
| RP-30L | 73 | TS-1L | 26 | TS-14 | 42 | ZA-8AN | N/S |
| RP-33 | 74 | TS-1R | 26 | TS-14302 | 42 | ZA-8N | N/S |
| RP-33SLIM | 74 | TS-2 | 27 | TS-14N | 42 | ZP-4 | N/S |
| RP-35 | 75 | TS-2-2 | 27 | TS-14NR | 42 | ZP-8 | N/S |

NOTES: * = Custom Part N/S = Not Shown Check Price List for full listing of available part numbers.

ALARM CONTROLS® WARRANTY

Alarm Controls (“seller”) warrants its security equipment (“the product”) to be free from defects in materials and workmanship for the life of the product, unless expressly stated otherwise, under normal use and service. Digital Keypads and Passive Infrared Detectors have a three year warranty. Seller’s obligation is limited to repairing or replacing, at its option, free of charge for parts, labor, or transportation, any part proven to be defective in material or workmanship under normal use and service. Seller shall have no obligation under this warranty or otherwise if the product is altered or improperly repaired or serviced by anyone other than the Seller.

This limited warranty is in lieu of all other express warranties, obligations, or liabilities. There are no express warranties which extend beyond the face hereof. All implied warranties, obligations or liabilities made by Seller in connection with this product, including any implied warranty of merchantability, or fitness for a particular purpose or otherwise are limited to the stated warranty period. In no case shall the Seller be liable to anyone for any consequential or incidental damages for breach of this or any other warranty, express or implied, or upon any other basis of liability whatsoever, even if the loss or damage is caused by the Seller’s own negligence or fault.

Seller does not represent that the product may not be compromised or circumvented; that the product will prevent any personal injury or property loss by burglary, robbery, fire or otherwise; or that the product will in all cases provide adequate warning or protection. Buyer understands that a properly installed and maintained security system may only reduce the risk of burglary, robbery or fire occurring without providing an alarm, but it is not insurance or a guarantee that such will not occur or that there will be no personal injury or property loss as a result. Consequently, Seller shall have no liability for any personal injury, property damage or other loss based on a claim the product failed to give warning. However, if Seller is held liable, whether directly or indirectly, for any loss or damage arising under this limited warranty or otherwise, regardless of cause or origin, Seller’s maximum liability shall be the complete and exclusive remedy against Seller.

For Terms & Conditions and Warranty information pertaining to product sales in Canada, please visit www.assaabloy.ca/terms





800.847.5625
seclock.com

seclock.com



Patent pending and/or patent www.assaabloydss.com/patents
Copyright © 2020, Hanchett Entry Systems, Inc., an ASSA ABLOY Group company.
All rights reserved. Reproduction in whole or in part without the express written
permission of Hanchett Entry Systems, Inc. is prohibited. AC-027-0620-SLD

Experience a safer
and more open world