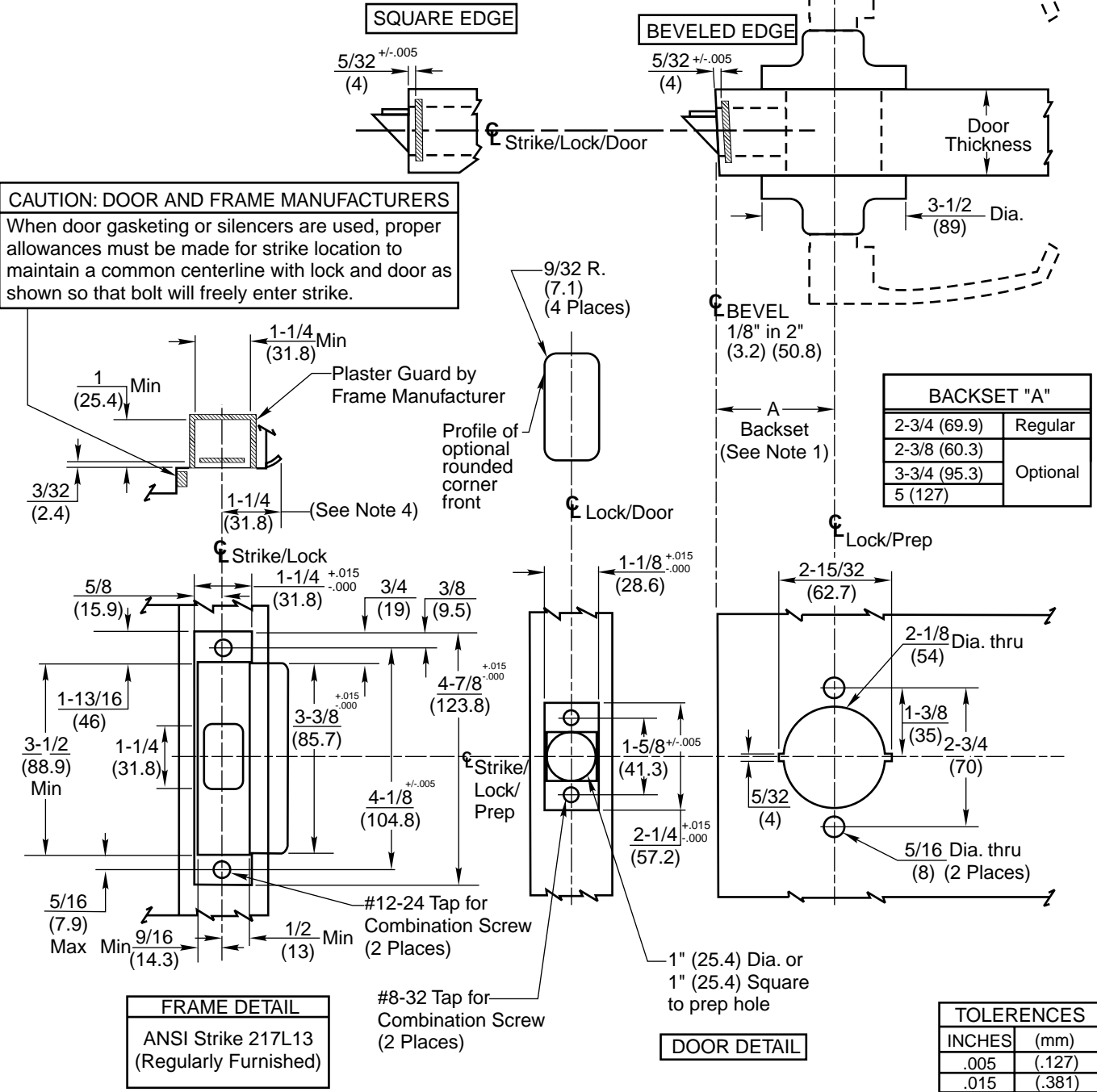


Notes:

1. Backset is measured from centerline of bevel which is centerpoint of door thickness.
2. Door prep with 2-3/4" (69.9) backset meets ANSI standards A115.2 for steel doors and A115.W2 for wood doors plus through bolt holes shown.
3. Dimensions given in inches and (mm).
4. 1-1/4" strike lip suits frame for 1-3/4" thick door. Lip will vary for other door thicknesses.

TEMPLATE CROSS REFERENCE	
DESCRIPTION	TEMPLATE
CL3850 & CL3870 Dummy Trim	T30685
Curved Lip Box Strike (SC Series)	T30476
Rabbeted Front & Strike (SR118)	T30640
Full Lip Strike (SF118)	T30648



RESPONSIBILITY
Door and Frame Manufacturers are responsible for providing adequate construction or reinforcements for proper installation of hardware shown. All architectural builders hardware must be installed on properly reinforced doors and frames, regardless of the type, material, or method of construction.

CL3800 Series Cylindrical Lever Lockset (2007 - Present)
All Functions And Trims Except Dummy Trim

Corbin Russwin
www.corbinrusswin.com
Do Not Scale Drawing

Supersedes	Dr.	App.
Date	1-07	Template Number T31005