



**ASSA ABLOY**

**ED8200A SERIES - FIRE RATED RIM  
EXIT DEVICE - REVERSIBLE FOR WOOD  
AND METAL DOORS**

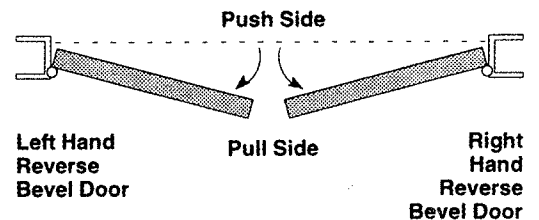
Installation Instructions FM 124B 2/10 (617402100)

STEP	TABLE OF CONTENTS	PAGE
	GENERAL INFORMATION.....	1
	FASTENER CHART.....	1
1	MARK HORIZONTAL CENTERLINE OF DEVICE.....	2
2	INSTALL TRIM.....	2
3	CUT PUSHBAR.....	2
4	MOUNT EXIT DEVICE.....	3
5	INSTALL STRIKE.....	4
6	INSTALL FRONT BAR INSERT, REAR & FRONT COVERS.....	4
7	TEST PUSHBAR.....	4

**IMPORTANT:**

- Failure to follow these instructions could affect operation of this product and void warranty.
- Some trim designs are handed when used with this device (see trim instructions).
- Exit devices must be securely fastened to properly reinforced doors with fasteners which will not loosen or pull out. Add reinforcement when necessary.
- **Before Installing:** Be sure exit device is the proper hand for your door.
- Use enclosed template to assure proper operation.

**How to Determine Hand of Door**



**FASTENER CHART**

ED8200A		
Latch Assembly	6	#12-24 x 7/8" phillips Flat head machine screws.
Rear Bracket	2	#12-24 x 3/4" phillips pan head machine screws, and #12 internal Washers (Wood doors #12 x 1 1/4" phillips pan head, type A, tapping screws)
Strike, UL	4	#12-24 x 7/8" phillips Flat head machine screws.
Front Bar insert	1	#8-32 X 1" phillips pan head machine screw
Rear Cover	1	#8-32 X 1" phillips flat head machine screw with external washers
Front Cover	2	#8-32 X 1/2" phillips flat head machine screw, type F, with external washers
Non-Reinforced Door	4	#12-24 x 1 21/32 Sex Nuts

# 1. Mark Horizontal Centerline of Device

Establish centerline of device by drawing line across door and stop,  $40\frac{5}{16}"$  (1.02 m) above finished floor unless doors have been pre-prepped (See Figure 1).

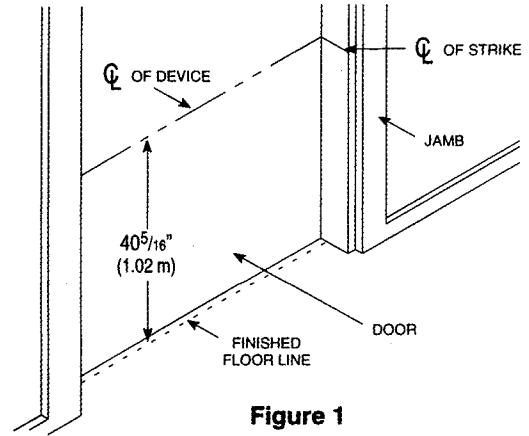


Figure 1

# 2. Install Trim (If Furnished)

See separate trim installation instructions.

# 3. Cut Pushbar (If Required)

**NOTE: If bar does not require cutting, proceed to step 4.**

- A. Installation of device depends on trim: Note  $\frac{3}{4}"$  (19 mm) minimum restriction (See Figure 2).
- B. Measure and mark bar as shown (See Figure 3).
- C. Fully depress bar and cut off square on mark. (See Figure 4).

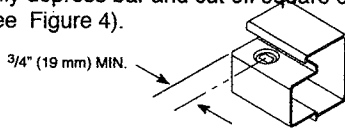


Figure 2

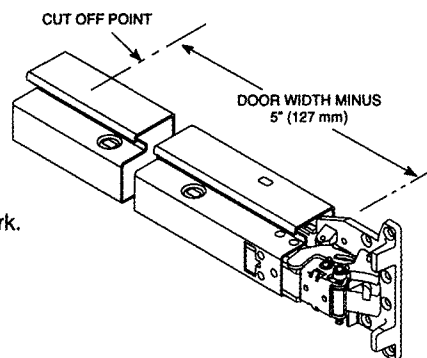


Figure 3

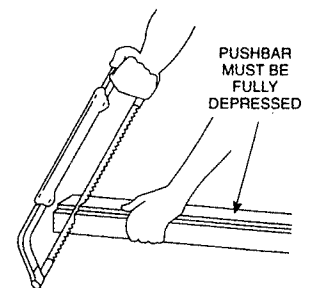


Figure 4

## 4. Mount ED8200A EXIT DEVICE

### A1. FOR REINFORCED METAL DOORS

Installation of device depends on trim:

**For throughbolted trim** in 2 1/8" prep, install device with two fillister head screws (packed with trim) in latch assembly holes marked **D** (See Figure 5).

**For all other applications**, install device with two pan head machine screws and two internal tooth lock washers in latch assembly holes marked **C**.

### A2. FOR ALL OTHER DOOR TYPES

Installation of device depends on trim:

**For throughbolted trim** in 2 1/8" prep, install device with two fillister head screws (packed with trim) in latch assembly holes marked **D** (See Figure 5).

**For all other applications**, install device with two pan head machine screws, two internal tooth lock washers and two sex nuts in latch assembly holes marked **C**.

### B1. FOR REINFORCED METAL DOORS

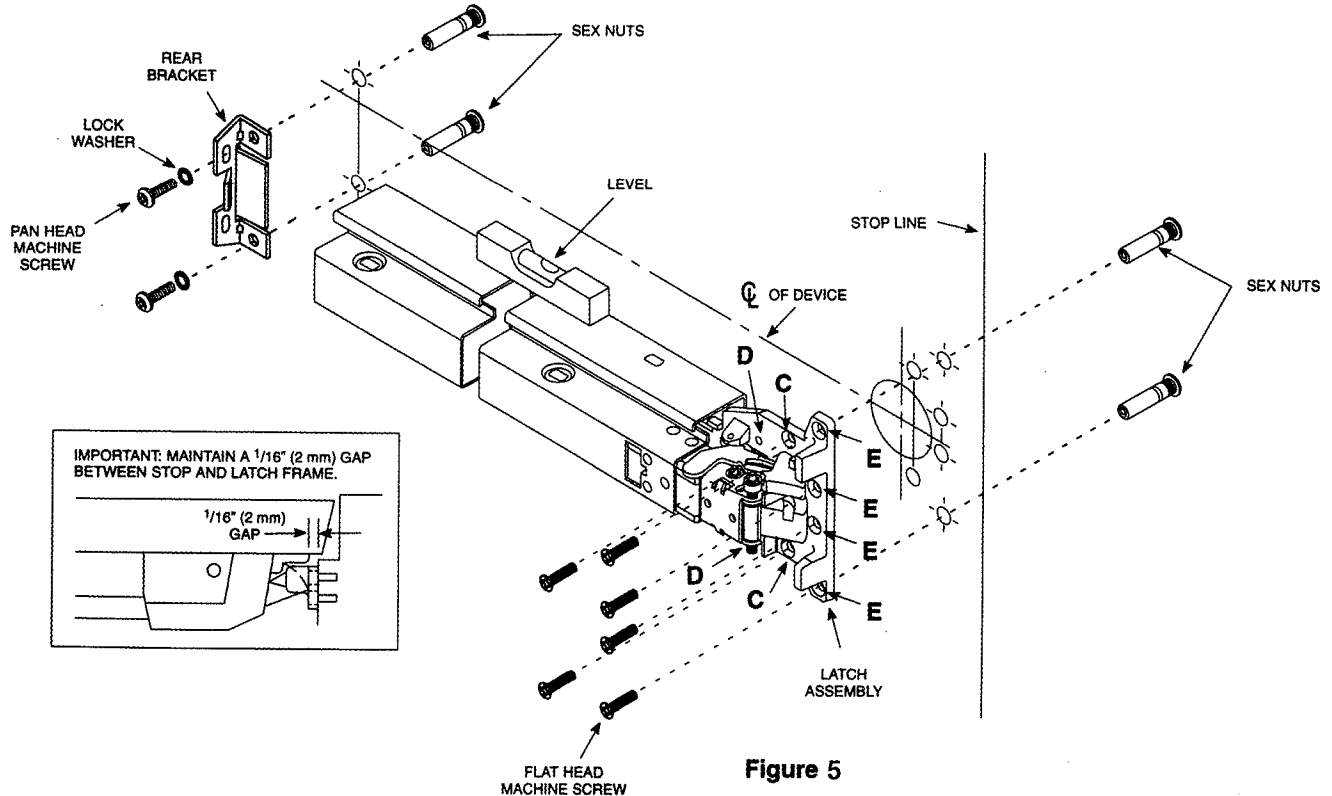
Use level as shown to ensure device is level. Use rear bracket to spot, drill and tap two rear bracket mounting holes. Attach rear bracket to door using two pan head machine screws and two lock washers. Drill, tap and install four flat head machine screws in latch assembly holes marked **E**.

### B2. FOR ALL OTHER DOOR TYPES

Use level as shown to ensure device is level. Use rear bracket to spot and drill 1/4" (6 mm) holes through door. Enlarge holes to 3/8" (10 mm) from opposite side of door to clear for sex nuts and bolts. Attach rear bracket to door using two pan head machine screws, two lock washers and two sex nuts.

### C. FOR UN-REINFORCED DOORS ONLY

Using device as a template, drill 1/4" (6 mm) top and bottom latch assembly holes marked **D** through door. Enlarge holes to 3/8" (10 mm) from opposite side of door to clear for sex nuts. Install two flat head machine screws and two sex nuts. Drill and tap two middle latch assembly holes marked **E** and install two flat head machine screws (if applicable).



**Figure 5**

## 5. Install Strike

Install strike using two flat head machine screws in holes marked **A** (See Figure 6). Adjust strike. Strike is properly adjusted when latch is able to fully project when door is closed. Drill, tap and install two flat head machine screws in holes marked **B**. Tighten all screws.

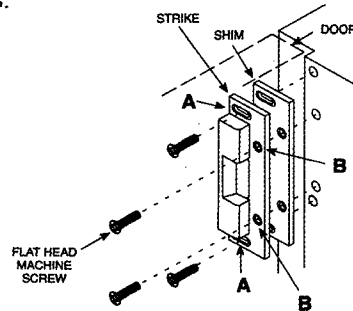
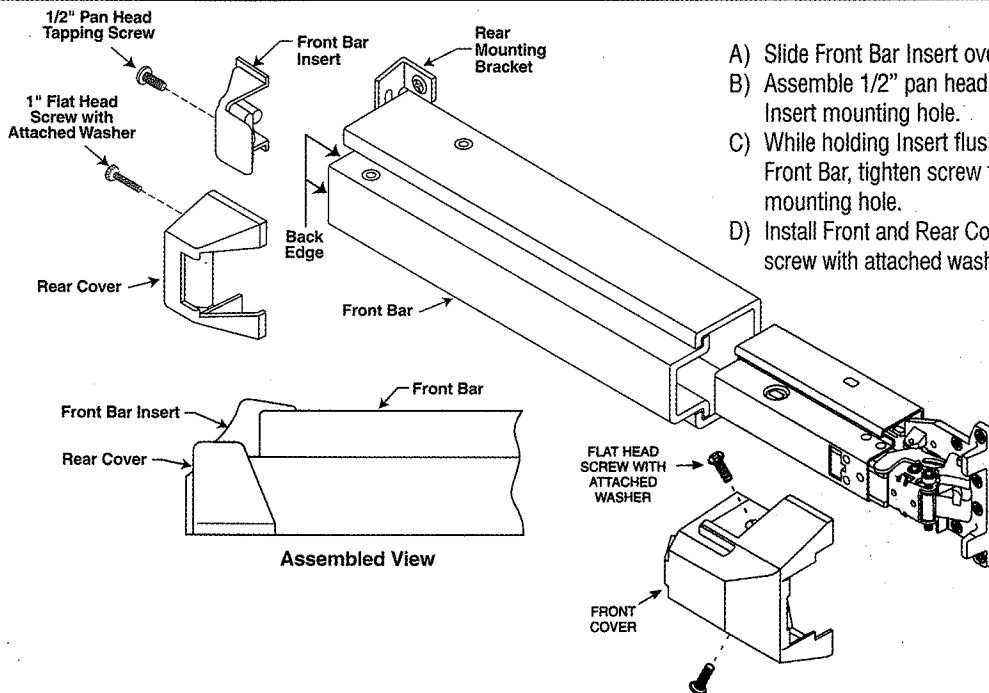


Figure 6

## 6. Install Front Bar Insert, Rear & Front Covers



- A) Slide Front Bar Insert over end of Front Bar.
- B) Assemble 1/2" pan head tapping screw through Insert mounting hole.
- C) While holding Insert flush against back edge of Front Bar, tighten screw to bottom of recessed mounting hole.
- D) Install Front and Rear Cover using 1" flat head screw with attached washer.

## 7. Test Pushbar

Latchbolt is retracted by pushbar inside. If latchbolt does not operate properly or does not remain secure, inspect all mounting dimensions outlined in steps 3, 4 and 5.

**Technical Product Support:**  
Telephone: 888-607-5703  
Fax: 860-828-7277

In U.S.: Corbin Russwin, Inc.  
225 Episcopal Road  
Berlin, CT 06037-4004  
[www.corbinrusswin.com](http://www.corbinrusswin.com)

In Canada: ASSA ABLOY  
Door Security Solutions Canada  
160 Four Valley Drive  
Vaughan, ON, L4K 4T9  
[www.assaabloy.ca](http://www.assaabloy.ca)

ASSA ABLOY is the global leader in door opening solutions, dedicated to satisfying end-user needs for security, safety and convenience.