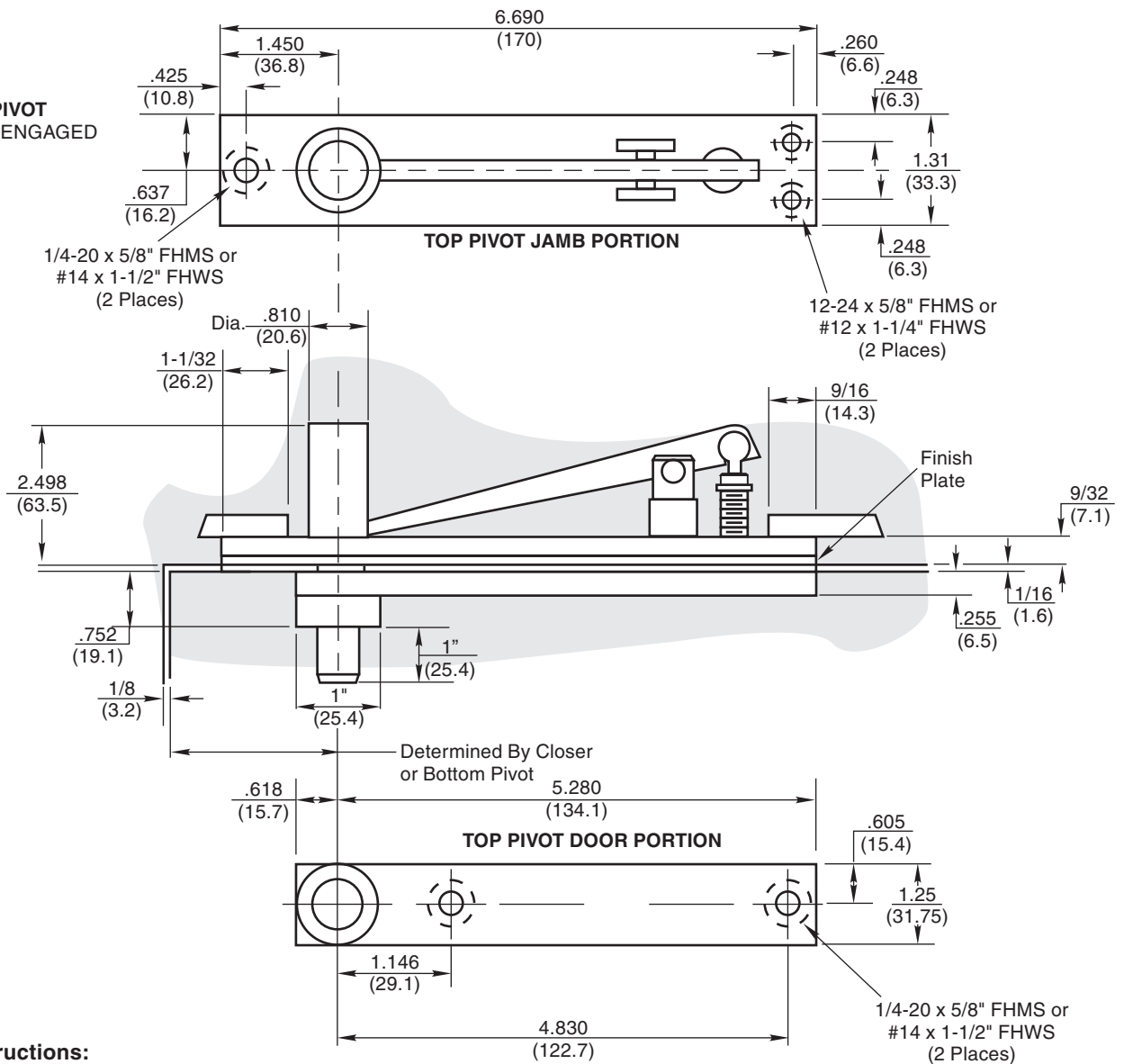


**345 TOP PIVOT  
PIVOT SHOWN ENGAGED**



**Installation Instructions:**

1. Prepare door and frame per details shown. Do not scale drawing.
2. To insure proper operation of door, the centerline of the top pivot pin must be straight and plumb with bottom spindle.
3. Install jamb portion with pin retracted.
4. Install door portion.
5. Place door on bottom pivot and raise door to vertical position.
6. Engage top pivot pin by turning adjusting screw clockwise when door portion is in alignment with the jamb portion.

Do not scale drawing.  
All dimensions are in inches (mm).

**345 Top Pivot  
Center Hung Extended Pin  
Non-Handed**

**RIXSON®**  
**ASSA ABLOY**

www.rixson.com

TEMPLATE NUMBER

**IS-345**

DATE

**11-09**